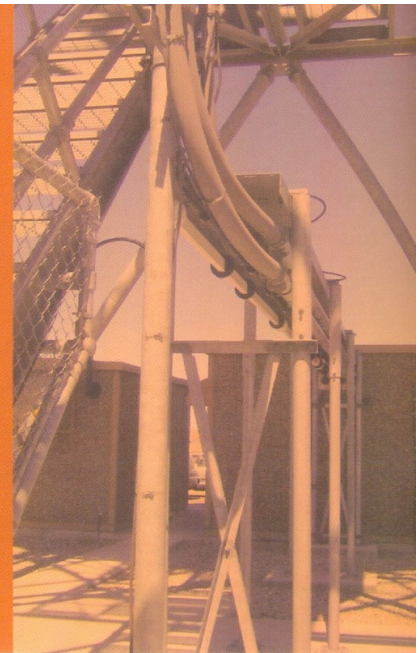


# SINGLE CORE / MULTICORE INDUSTRIAL CABLES

Bare Copper Conductor, PVC Insulated  
 Unsheathed 650/1100 V. Single Core Industrial  
 Wires & Cables For Panel Board Wiring As Per  
 IS : 694/1990 With ISI Mark (up to 50 sq. mm)



NOMINAL AREA IN SQ. MM	NO. OF STRANDS/ NOM. DIA IN SQ. MM.	MAX. DC RESISTANCE OHM / KM AT 20 C	NOMINAL INSULATION THICKNESS IN MM	OUTER DIA (APPROX.)	CURRENT RATING IN AMPS.	NOMINAL AREA IN SQ. MM	NO. OF STRANDS/ NOM. DIA	MAX. DC RESISTANCE OHM / KM AT 20 C	NOMINAL INSULATION THICKNESS IN MM	OUTER DIA (APPROX.)	CURRENT RATING IN AMPS.
0.50	16/0.20	39.00	0.60	2.20	4	70	360/0.5	0.272	1.6	15.5	170
0.75	24/0.20	26.00	0.60	2.50	7	95	485/0.5	0.206	1.8	18.5	210
1.00	32/0.20	19.50	0.60	2.60	11	120	608/0.5	0.161	2.0	20.9	235
1.50	48/0.20	13.30	0.60	2.90	13	150	750/0.5	0.129	2.0	22.5	295
2.50	80/0.20	7.95	0.70	3.50	18	185	925/0.5	0.106	2.2	24.6	330
4.00	56/0.30	4.95	0.80	4.30	24	240	1221/0.5	0.0801	2.2	27.6	400
6.00	84/0.30	3.300	0.80	5.30	33	300	1527/0.5	0.0641	2.4	32.2	475
10.00	140/0.30	1.910	1.00	6.70	45	400	2036/0.5	0.0486	2.6	35.7	550
16.00	126/0.4	1.210	1.00	8.20	60	500	2540/0.5	0.0384	2.4	38.0	625
25.00	196/0.4	0.780	1.20	10.00	75	630	3200/0.5	0.0287	3.0	45.5	725
35.00	276/0.4	0.554	1.20	11.3	95	800	4100/0.5	0.0224	3.4	51.0	850

## Note

- > Industrial Cables above 50 sq. mm are not covered by IS:694 but are as per IS:1554
- > The conductor construction given above is indicative only and will be such that all requirements.
- > Of strand diameter and conductor resistance as per IS:694 and IS:1554 are met.

## Technical Data

### Working Voltage upto 1100 V Temperature range

-15 deg. C to +70 deg. C

Size 0.5 to 4.0 sq. mm in two core to 24 cores

6.0 to 120 sq. mm in Three and Four cores

Colour Code

Black and Grey, White outer sheath  
 2 core cable-Red, Black  
 3 core cables-Red, Yellow, Blue, Black and Grey  
 any required colours on specific request

Specification

IS 6947 : 1990

Packing

In 90 Mtr. coils, Higher sizes on drums.