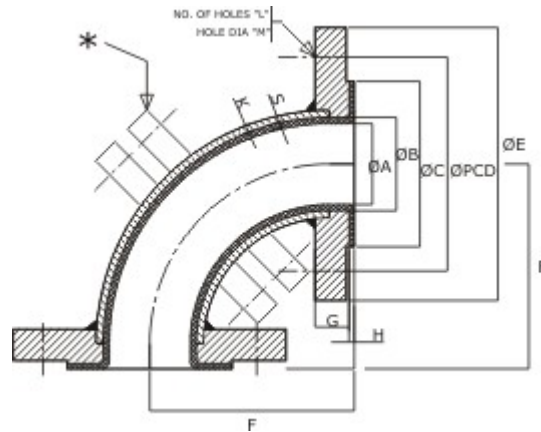


Lined Elbow 90°



SPECIFICATIONS:

1. **ALL DIMENSIONS ARE IN MM**
2. **MATERIAL OF CONSTRUCTION**
 1. **ELBOW BODY** : ASTM A 235 GR WPB
 2. **FLANGE** : ANSI B. 16.5 ASA 150# IS 2002
 3. **LINER** : ASTM D 1457 TYPE III, PTFE
 4. * : In Two Piece Construction
 5. ** : In Three Piece Construction

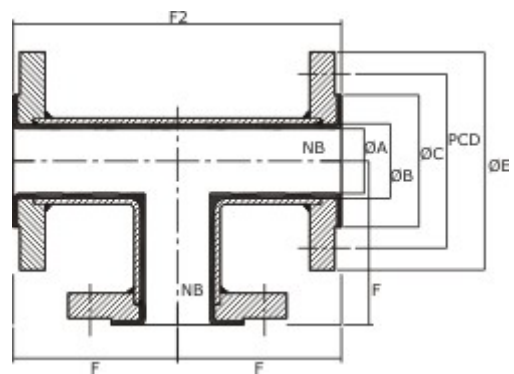
Dimension Table

Size (NB)	øA±1øB	øC	F1	F	PCD	øE	G	No. of Holes	Holes Dia	Pipe THK. K	Liner THK. S	Face THK. H	
15 MM	14	21	34.9	44	89	60.3	88.9	11.14	15.9	2.9	4	2.4	
20 MM	19.6	26.6	42.7	44	89	69.8	98.4	$\frac{12}{7}$	4	15.9	3.4	4	2.4
25 MM	19.6	26.6	50.8	44	89	79.4	108	$\frac{14}{2}$	4	15.9	3.4	4	2.4
32 MM	28.1	35.1	63.5	51	95	88.9	117.5	$\frac{15}{8}$	4	15.9	3.6	4	2.4
40 MM	33.9	40.9	73	57	102	98.4	127	$\frac{17}{5}$	4	15.9	3.7	4	2.4
50 MM	45.5	52.5	92.1	63	114	120.7	152.4	$\frac{19}{1}$	4	19	3.9	4	2.4
65 MM	55.7	62.7	104.8	76	127	139.7	177.8	$\frac{22}{2}$	4	19	5.2	4	2.4

80 MM	70.9	77.9	127	76	140	152.4	190.5	$\frac{23}{8}$	4	19	5.5	4	2.4
100 MM	95.3	$\frac{102}{3}$	157.2	102	165	190.5	228.6	$\frac{23}{8}$	8	19	6	4	2.4
125 MM	119.2	$\frac{128}{2}$	185.7	114	190	215.9	254	$\frac{23}{8}$	8	22.2	6.6	5	3.8
150 MM	145.1	$\frac{154}{1}$	215.9	127	203(205) *	241.3	279.4	$\frac{25}{4}$	8	22.2	7.1	5	3.8
200 MM*	197.4	$\frac{206}{4}$	269.9	140	229(338) *	298.5	342.9	$\frac{28}{6}$	8	22.2	6.35	5	3.8
250 MM*	249.3	$\frac{260}{3}$	323.9	165	(419)*	362	406.4	$\frac{30}{2}$	12	25.4	6.35	6	4
300 MM*	300.1	311.1	381	190	(483)*	431.8	482.6	$\frac{31}{8}$	12	25.4	6.35	6	4
350 MM*	328.7	$\frac{339}{7}$	412.8	226	(546)*	476.3	533.4	$\frac{34}{9}$	12	28.6	7.92	6	4
400 MM*	379.5	$\frac{390}{5}$	469.9	253	(610)*	539.8	596.9	$\frac{36}{5}$	16	28.6	7.92	6	4
450 MM*	429.3	$\frac{441}{3}$	533.4	279	(673)**	577.9	635	$\frac{39}{7}$	16	31.8	7.92	6.5	4.4
500 MM*	475.9	$\frac{488}{9}$	584.2	305	(737)**	635	698.5	$\frac{42}{9}$	20	32	9.52	7	4.8
600 MM*	575.9	$\frac{590}{5}$	692.2	358	(864)***	749.3	812.6	$\frac{47}{6}$	20	35	9.52		



REDUCER



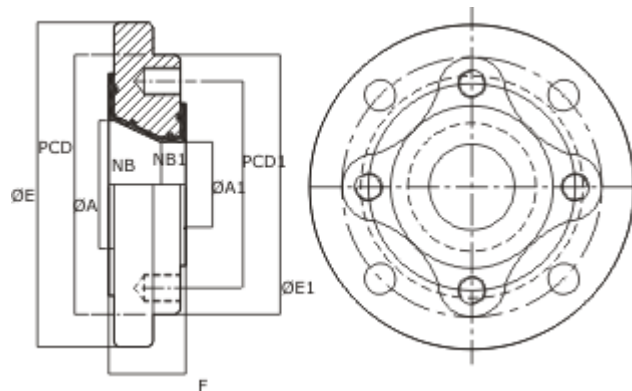
SPECIFICATIONS:

1. **ALL DIMENSIONS ARE IN MM**
2. **FOR OTHER DIMENSIONS PLEASE SEE 'LINED PIPE' PAGE**
3. **MATERIAL OF CONSTRUCTION**
 1. **EQUAL TEE: EQUAL CROSS BODY (PIPE)**
ANSI 6 3G. 10 ASTM A210 Gr. WCB / ASTM A 100 G B
 2. **FLANGE :** ANSI B. 16.5 ASA 150# IS 2002
 3. **LINER :**
ASTM D 3418
ASTM D 2116

Dimension Table

NB	F	F2
20 MM	89	178
25 MM	89	178
32 MM	95	190
40 MM	102	204

50 MM	114	228
65 MM	127	254
80 MM	140	280
100 MM	165	330
125 MM	190	380
150 MM	203	406
200 MM	229	458
250 MM	279	558
300 MM	305	610
350 MM	356	712
400 MM	378	756
500 MM	457	914
600 MM	559	1118



SPECIFICATIONS:

1. ALL DIMENSIONS ARE IN MM
2. FOR OTHER DIMENSIONS PLEASE SEE 'LINED PIPE' PAGE
3. MATERIAL OF CONSTRUCTION
 1. EQUAL TEE: EQUAL CROSS BODY (PIPE)

■ **FLANGE** : ANSI B. 16.5 ASA 150W IS 2002

1. ■ **LINER** :
 - ASTM D 3418
 - ASTM D 2116

Dimension Table

NB	NB1	F
20	15	35
25	20	35
25	15	35

32	25	35
32	20	35
40	32	35
40	20	35
50	40	35
50	32	35
50	25	35
50	20	35
65	50	35
65	40	35
65	20	3

Dimension Table

NB	NB1	F
80	65	45
80	50	45
80	40	45
80	25	45
100	80	45
100	65	45
100	50	45
100	40	45
100	25	45
125	100	45
125	80	45
125	50	45
150	125	54
150	100	54
150	80	54

Dimension Table

NB	NB1	F
200	150	54
200	125	54
200	100	54
200	80	54
200	50	54
250	200	54
250	150	54
250	100	54
250	80	54
300	250	54
300	200	54
300	100	54
350	300	60
350	200	60
350	100	6

