

OMEGA PRODUCTS PRIVATE LIMITED

Metal Glaze Resistors

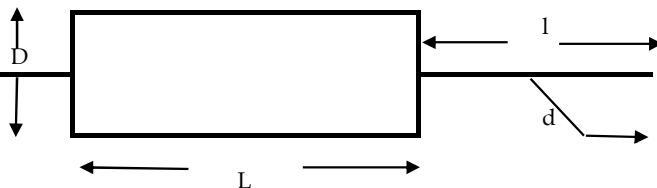
OMG Series

DESCRIPTION

A homogeneous Film alloy is deposited on 85 to 96% Alumina Ceramic Rods and conditioned to achieve the desired Temperature Coefficient. Nickel plated caps are firmly pressed on the metallised rods. A special Laser machine is used to achieve the highly precise resistance tolerance by cutting a helical groove in the film layer. Tin coated electrolytic copper wire are spot welded to the center of the termination caps. The resistor are coated with special epoxy or Flame proof Epoxy for Electrical , Mechanical and climatic protection,colour codes are applied with respect to designated value on coated Resistor.All Resistors are subjected to tesing before final taping process.

FEATURES :

- Wide Range of Resistors
- Pulse withstanding design available
- RoHS Compliant
- Custom Built Design and values available



SPECIFICATION

TYPE	WATTAGE	L	D	l	d	Working Voltage	Resistance Range	TCR
OMG25	0.25W	6.5 ± 0.5	2.3 ± 0.2	25 ± 0.2	0.60 ± 0.02	1600V	100K to 10M	100, 200
OMG 50	0.5W	9.5 ± 0.5	3.5 ± 0.2	25 ± 0.2	0.60 ± 0.02	3500V	100K to 10M	100, 200

PERFORMANCE CHARACTERISTIC

Requirement Shall not Exceed

Short Term Overload (2.5 x Rated voltage - 5 Sec)	Delta R	± (1.0% +0.05 Ohms)	
Load Life (Rated at 70°C 1000 Hrs 1.5/0.5 Hr ON/OFF)	Delta R	± (3.0% +0.05 Ohms)	
Temperature Cycling (-55 / +155, 5 cycles)	Delta R	± (0.5% +0.05 Ohms)	
Insulation Resistance (at 500V for 1 Min)		Shall not be less than 10 000 M Ohms	
DWV Test (2 x Limiting voltage - 1 Min)	Delta R	± (0.5% +0.05 Ohms)	
Resistance Soldering Heat (260°C 10 Sec)	Delta R	± (1.0% +0.05 Ohms)	
Solderability (Solder bath dip - 5 Sec)		Greater than 95% Coverage	
Resistance to Solvents (Solvent dip - 3 min)		No effect of IPA /TCE Solvents	
Damp Heat Steady State (40°C/95% Rh - 56 days)	Delta R	± (2.0% +0.05 Ohms)	
Vibration (10 to 2000 Hz)	Delta R	± (0.5% +0.05 Ohms)	
Shock (1 Km/S ²)	Delta R	± (0.5% +0.05 Ohms)	
Low Temp Operation (-55°C 2 Hrs without Loading)	Delta R	± (1.0% +0.05 Ohms)	
High Temp Operation(+155°C 16 Hrs without Loading)	Delta R	± (1.5% +0.05 Ohms)	
Terminal Strength (Bending, Tensile, Torsion)	Delta R	± (0.25% +0.05 Ohms)	& No Mech. Damage

Ordering Info:

OMG25 100K 1% 200 PPM T/R

*Specifications is subject to change without notice