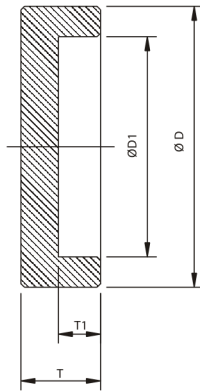


## END CAP



### AVAILABLE M.O.C. :

PP ( POLYPROPYLENE )  
HDPE ( HIGH DENSITY POLYETHYLENE )  
ISOTACTIC PP  
PVDF ( POLYVINYLIDENE FLUORIDE )



### ALL DIMENSIONS ARE IN MM (±2 MM)

SIZE IN.	MM.	Ø D	Ø D1	T	T 1
½ "	20	20	12.0	12.0	8.0
¾ "	25	25	12.0	12.0	8.0
1 "	32	32	24.5	13.0	8.0
1 ¼ "	40	40	30.0	16.0	8.0
1 ½ "	50	50	38.0	16.5	9.0
2 "	63	63	47.0	17.0	9.5
2 ½ "	75	75	57.0	18.0	10.0
3 "	90	90	70.0	18.0	10.0
4 "	110	110	100.0	19.0	10.0
5 "	125	125	111.0	22.5	12.0
5 ¼ "	140	140	111.0	24.0	12.0
6 "	160	160	130.0	27.5	15.0
7 "	180	180	150.4	28.5	18.0
8 "	200	200	165.0	28.5	17.0
9 "	225	225	191.0	28.5	19.0
10 "	250	250	211.0	34.0	23.0
11 "	280	280	235.5	36.0	23.0
12 "	315	315	261.5	36.0	23.0

AS PER IS : 8008 - 1976 (PART VI)  
MAX. WORKING PRESSURE 10kg / cm<sup>2</sup>