

Metal List with Glossary of Common Scrap Metals

Learn about different scrap metals from Non-Ferrous, Ferrous, and E-Scrap metals. With descriptions, videos, and tips on recycling your scrap metals. Check out the complete metal guide for experienced to beginner scrappers.

Non-Ferrous Materials



#1 Bare Bright Copper Wire

Bare, uncoated, unalloyed copper wire free of attachments. All the insulation has been removed from the wire and it is free of solder and paint.



#1 Copper Tubing

Bare, uncoated, unalloyed copper bus bar/pipe free of attachments.



#1 Flashing Copper

Bare, uncoated, unalloyed copper free of tar, corrosion, paint, etc. Used in house decor and roofing.



#2 Copper Tubing

Burnt copper, copper with light tin coating, solder, or brass fittings still attached.



#2/3 Mix Copper

When Copper Tubing and Roofing Copper are mixed together instead of separated and usually has solder or paint on it.



#3 Copper with Tar

Roofing copper with heavy tar, wood, or attachments.



#3 Roofing Copper

Roofing/gutter/flushing copper with little tar or attachments like nails or wood.



17-4 Stainless Steel

Must be analyzed and have no attachments. Used in the food and aerospace industries.



300 Series Stainless Steel

Most common form of Stainless Steel, will not stick to a magnet.



304 Stainless Steel

Must be analyzed and have no attachments. Commonly found in kitchen equipment.



310 Stainless Steel

Must be analyzed and have no attachments. Often used for high temperature equipment.



316 Stainless Steel

Must be analyzed and have no attachments. Used in food and boat industries.



321 Stainless Steel

Must be analyzed and have no attachments. Used in aircrafts and exhaust systems.



400 Series Stainless Steel

Contains no nickel and is magnetic. Used for high temperatures.



500/750 Insulated Cable

Insulated Copper Cable with rubber jacket.



ACR

Free of brass/iron/plastic.



ACR Ends

Ends from the ACR/Copper Fins, usually contain iron or steel.



AL Extrusion

Must not contain other alloys of aluminum and be free of zinc corners, iron attachments, felt, plastic, paper, cardboard, and thermo break.



AL Thermopane

Aluminum with plastic insulated running through the middle.



AL/ Copper Rads w/Iron

Plastic/iron/steel attached.



AL/Copper Cutoffs

Ends from the ACR/Copper Fins, usually contain iron or steel.



Alternators

Found in cars, trucks, and other vehicles, they are filled with wound copper wire.



Aluminum #3

Mid-grade aluminum that is not considered breakage but not as clean as aluminum.



Aluminum 6061

Clean cutoff 6061 material. May have to be analyzed by scrap yard.



Aluminum 6063

Clean cutoff 6063 material. May have to be analyzed by scrap yard.



Aluminum Boat

Many boats will have wood, debris, foam, or other contaminants in them. It is recommended you clean out all non-aluminum items to maximize your returns.



Aluminum Breakage

Aluminum recyclables with greater than 8% of foreign attachments but less than 40%



Aluminum Bumpers

No plastic/foam/steel attached.



Aluminum Cans

Free of foil/tin/plastic/liquid/ garbage/etc. Can be crushed or whole.



Aluminum Clips

Clean cutoff 6061 material.



Aluminum Copper Coil

Free of steel, rubber, plastic, generally from air conditioning units.



Aluminum Copper Radiators

Free of brass/iron/plastic.



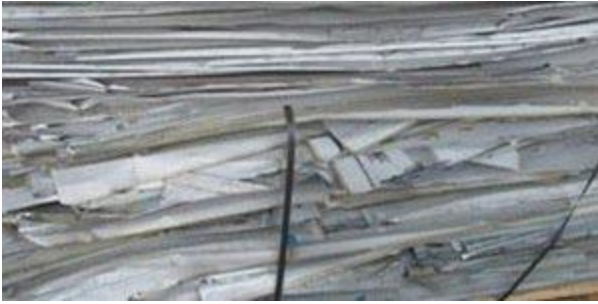
Aluminum Diesel Tank

The fuel tanks off of diesel trucks, make sure that there is a hole cut in it and that it was drained correctly.



Aluminum Engine Block

From cars, trucks, other vehicles, make sure that they are free of oil and remove plastic attachments.



Aluminum Litho

No paper/plastic/ink or other contaminants.



Aluminum Radiators

Auto radiators free of steel/plastic/liquid.



Aluminum Rims

Free of rubber tire/dirt/attachments. Free of Lead Wheel Weights.



Aluminum Scrap

Aluminum Scrap: Many variations of aluminum, ask scrap yard.



Aluminum Siding

Clean of plastic coating/foam/dirt/steel. Remove steel nails for clean price.



Aluminum Thermo-Pane/Break

Aluminum with plastic insulated running through the middle.



Aluminum Transformers

Has a steel core with aluminum windings surrounding it. Could have an outer case surrounding the aluminum as well.



Aluminum Turnings

The excess from machine cut aluminum free of oil or steel.



Aluminum Wire w/Steel

Clean aluminum wire can sometimes have a steel core going through or around it. Use your magnet to find out.



Ballasts

Consist of copper inside of them, found in lighting fixtures.



Bare Bright Copper

Bare, uncoated, unalloyed copper wire free of attachments.



Brass

Mixed Brass castings, taps, valves, rod brass, chrome plated brass.



Brass Hair Wire

Brass wire, zinc plated or clean, from EDM machine.



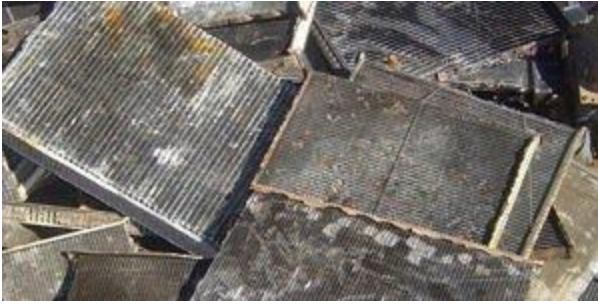
Brass Heater Cores

Brass heater cores from automobiles, no steel.



Brass Pipe

Free of solder/cast iron connections/free of sediment inside.



Brass Radiators

Free of steel sides and no coolant inside.



Brass Scrap

Many variations of copper, ask scrap yard.



Brass Shells

Little plastic/dirt/steel attached or residue inside w/out primers.



Brass Turnings

The excess from machine cut brass free of oil or steel.



Bronze

Free of high lead contamination or steel.



Bronze Turnings

The excess from machine cut bronze, free of oil or steel.



Burnt Copper

Copper wire that has been burnt and has residue/contamination.



Car/Truck Batteries

No holes, battery intact. Lead-acid batteries. Labeled "PB".



Carbide

Must be analyzed and have no attachments.



Cast Aluminum

Clean casted aluminum without steel/rubber/attachments.



Catalytic Converters

Must have both ends of exhaust cut off so scrap yard can see inside.



CATV Wire

Must be separated white from black.



Christmas Lights

Separate these from other wire due to the higher plastic content from the bulbs and other insulation.



Circuit Breakers

Many scrap yards will buy these as low bearing copper material.



Clean ACR

Free of brass/iron/plastic.



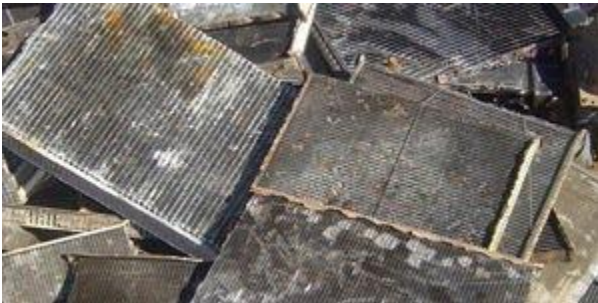
Clean AL Wire

Free of steel, plastic, rubber. Insulated cover is removed and no steel.



Clean AL/Copper Fin

Free of brass/iron/plastic.



Clean Brass Radiators

Free of steel sides and no coolant inside.



Clean Brass Turnings

No aluminum/steel mixed in, free of oil.



Clean Roofing Copper

Roofing/gutter/flashing copper with no tar or attachments.



Cobalt

Must be analyzed and have no attachments.



Communications Wire

CAT 5/6, Data wire, Insulated copper with plastic.



Composition Scrap

Red Brass free of high lead contamination or steel.



Compressors

Drained from oil/fluids from AC Units/Cooling Units.



Copper Scrap

Many variations of copper, ask scrap yard.



Copper Transformers

Has a steel core with copper windings surrounding it. Could have an outer case surrounding the copper as well.



Copper Turnings

No aluminum/steel mixed in, free of oil.



Copper Yokes

Copper Yokes are found on back of TV's and usually have a plastic cone around the copper wire.



Die Cast

Free of steel/iron/platic and melted pieces.



Dirty ACR

Plastic/iron/steel attached.



Dirty AL Extrusion

Dirty aluminum with plastic, rubber, contaminants on or as part of it.



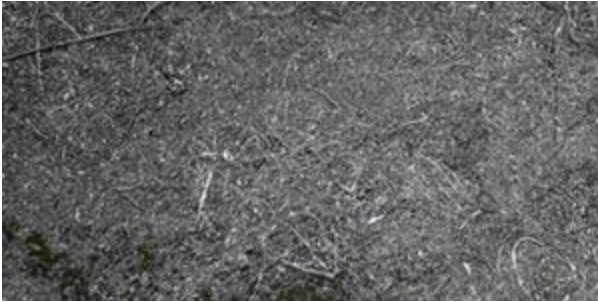
Dirty AL Radiators

Auto radiators with steel/plastic (no liquids).



Dirty AL/Copper Fin

Plastic/iron/steel attached.



Dirty Aluminum Turnings

Containing traces of steel or oil.



Dirty Brass

Contaminated with heavy iron, castings, plastic.



Dirty Brass Radiators

Plastic or iron attached to radiators (no coolant).



Dirty Roofing Copper

Roofing copper with heavy tar, wood, or attachments.



Double Insulated Cable

Used in many high voltage situations to ensure that copper is protected due to heavy electrical current.



EC Wire

Free of steel, plastic, rubber.



Electric Motors (Aluminum)

Whole motor without heavy steel attachments (pumps, bases, loose iron).



Electric Motors (Copper)

Whole motor without heavy steel attachments (pumps, bases, loose iron).



Elevator Wire

Insulated copper wire used in powering and running elevators, this will have a heavy cloth insulation as well as a steel core.



Enameled Copper

Coated copper, similar to a dirty copper pipe.



F 75

Must be analyzed and have no attachments.



Fire Wire

Used for running fire alarm systems.



Forktruck Battery

Steel encased lead acid batteries, they will be bought for less than a normal car battery price.



FSX 414

Must be analyzed and have no attachments.



Fuses

Many scrap yards will buy these as low bearing copper material.



Gold

Please call dealer for their description on buying gold scrap. Most will require State ID.



Hastelloy Solids

Must be analyzed and have no attachments.



Hastelloy Turnings

Must be analyzed and have no attachments.



Heliax Wire

Cell Phone Wire, several kinds, contact your yard to explain which you have.



High Speed Steel

Must be analyzed and have no attachments.



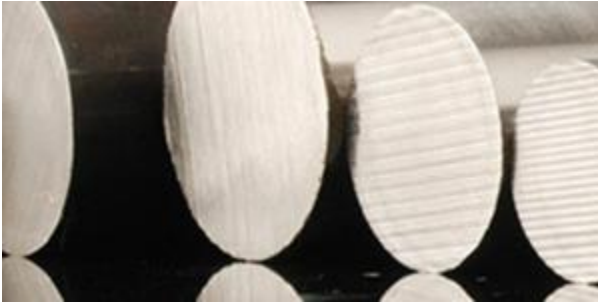
Housewire

Romex, CAT 5/6, Aluminum Jacketed BX w/copper inside, and other insulated wire.



Inconel

Must be analyzed and have no attachments.



Inconel 792

Must be analyzed and have no attachments.



Inconel 800

Must be analyzed and have no attachments.



Inconel 825

Must be analyzed and have no attachments.



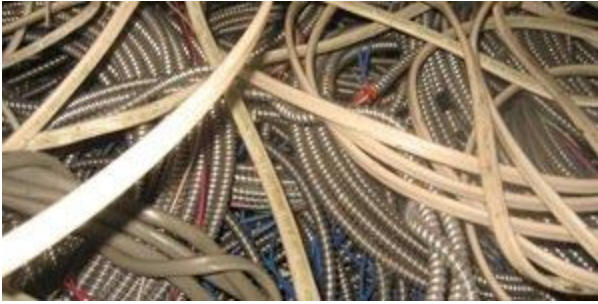
Insulated Aluminum Wire

Aluminum Wire covered by jacket, free of steel.



Insulated Copper Cable

Copper cable with heavier jacket or coating.



Insulated Copper Wire

Romex, CAT 5/6, Aluminum Jacketed BX w/copper inside.



Insulated Steel BX

Steel clad jacket with copper wire inside.



Invar

Must be analyzed and have no attachments.



Junkshop Extrusion

An extrusion, painted or not, containing no more than 3% iron.



Kovar

Must be analyzed and have no attachments.



Lead

Soft Scrap lead with no steel/foil/paper/brass or attachments.



Lead Batteries

No holes, battery intact. Labeled "PB" on fine print.



Lead Coated Copper

Roofing Copper/Bus bar with lead coating.



Lead Shot

Lead from bullets.



Lead Wheel Weights

No iron clips attached.



Light Copper

Roofing/gutter/flashing copper with little tar or attachments.



MarM247

Must be analyzed and have no attachments.



Meatballs (Electric Motors)

Electric motors taken from various appliances, machines, and equipment.



Monel

Must be analyzed and be free of attachments.



Ni-Cad Batteries

Non broken and no holes.



Nickel

Must be analyzed and have no attachments.



Non Magnetic Stainless Steel

Must not stick to a magnet, have steel or other items attached.



Old Sheet Aluminum

No plastic/steel/glass/dirt on the material.



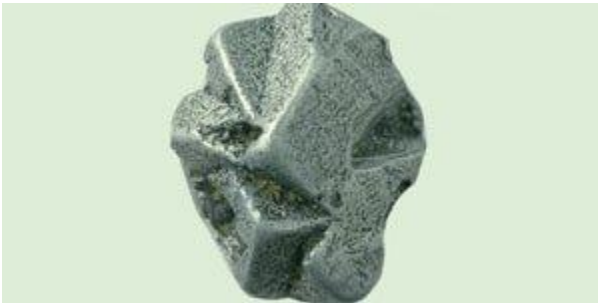
Painted Aluminum

Window Frame, AL Siding, that has been painted.



Pewter

With many types and grades of pewter, most scrap yards will have to analyze it before giving you a price.



Platinum

Must be analyzed and have no attachments.



Plumbers Brass

Mixed Brass castings, taps, valves, rod brass, chrome plated brass.



Prepared Aluminum

No dirt/steel/attachments.



Red Brass

Free of high lead contamination or steel.



Refined Rebrass & Copper

Brass and copper recyclables that consist of 50% or more of red metals.



Rod Brass

Cutoffs from machine shops and new brass production.



Rod Brass Turnings

The excess from machine cut brass free of oil or steel.



Romex® Wire

Most common in homes, has two jackets on the copper.



Sealed Units

Drained from oil/fluids from AC Units/Cooling Units.



Semi-Red Brass

A good example is a water meter, ask your scrap yard for their classification.



Sheet Aluminum

No plastic/steel/glass/dirt on the material.



Silver

Please call dealer for their description on buying silver scrap. Most will require State ID.



Silver Plated Copper

Copper with a small amount of silver as the coating.



Solid Core Heliax

Used in cell phone systems, they have a solid aluminum core running through them along with copper on the outside.



Stainless Steel

Must not stick to a magnet, have steel or other items attached.



Stainless Steel Breakage

Consists of stainless steel, but allows for small percentages of plastic and contaminants. Must be at least 50% stainless steel.



Stainless Steel Heatsinks

Used in computers to cool them, they are often grouped in with aluminum copper radiators.



Stainless Steel Kegs

Many states will not let you scrap these, so check with your local laws before trying to scrap them. Make sure that they are empty before scrapping them.



Stainless Steel Sinks

Most sinks will have a steel ring going around the bottom and will be bought lower than clean stainless.



Stainless Turnings

The excess from machine cut stainless steel free of oil or steel.



Starters

Found in cars, trucks, and other vehicles, they are filled with wound copper wire.



Steel BX

Steel clad jacket with copper wire inside.



Steel Case Batteries

Used in machinery like forktrucks and forklifts, with lead-acid.



THHN Wire

10-14 gauge wire, Spaghetti Wire, Solid copper inside.



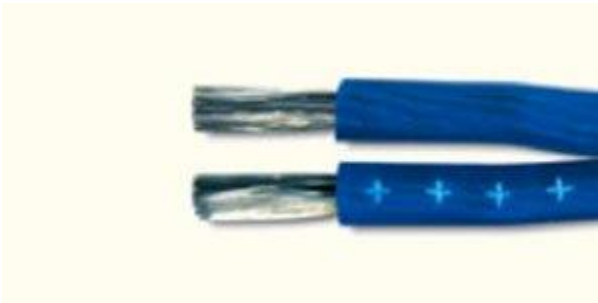
Tin Babbit

Must be analyzed and have no attachments.



Tin Coated Copper

Copper wire with a small amount of tin as the coating.



Tin Insulated Copper Wire

Tin Coated copper with insulation of any kind.



Unclean Brass Radiators

Plastic or iron attached to radiators (no coolant).



Wire Scrap

Many variations of copper, ask scrap yard.



Wiring Harness

Wires inside of a heavy plastic from cars.



Yellow Brass

Mixed Brass castings, taps, valves, rod brass, chrome plated brass.



Zinc

Pure Zinc without any foreign material.



Zorba

A heterogeneous mixture of aluminum and copper that remains after the shredded car has passed through the entire downstream operation.