

Ferrous Materials



#1 Heavy Melting Steel

Prepared pieces smaller than 60"x 24" over 1/4" thick.



#1 HMS

Prepared pieces smaller than 60"x 24" over 1/4" thick.



#1 Prepared

Prepared scrap steel smaller than 5 ft by 2 ft and with a heavy gauge of $\frac{1}{4}$ inch or more.



#1 Steel

Prepared pieces smaller than 60"x 24" over $\frac{1}{4}$ " thick.



#2 Heavy Melting Steel

Black pipe, longer unprepared pieces of #1 HMS.



#2 HMS

Scrap Steel with a lighter gauge and cannot include Light Iron or Sheet Metal.



#2 Prepared

Scrap Steel with a lighter gauge and cannot include Light Iron or Sheet Metal.



Automobiles

Scrap Autos are to be prepared by a licensed “auto recycler,” once processed free of gas tank, fluids, and battery it is densified or “crushed” for transportation purposes.



Busheling

Unpainted, new production scrap smaller than 12” and nothing coated on, no rust, or paint.



Car w/Tires

Ask dealer.



Cast Iron

Coil or old water piping, castings or plates from machinery.



Complete Car

A vehicle that has the radiator, battery, catalytic converter, motor, transmission, wheels and tires. A title for the vehicle is required.



Crushed Cars

Scrap Autos are to be prepared by a licensed “auto recycler,” once processed free of gas tank, fluids, and battery it is densified or “crushed” for transportation purposes.



Dishwashers

Could be sold as is for scrap.



Dry Automobile

Vehicle is drained of all fluids and the tires/wheels have been removed.



Dryers

Could be sold as-is for scrap.



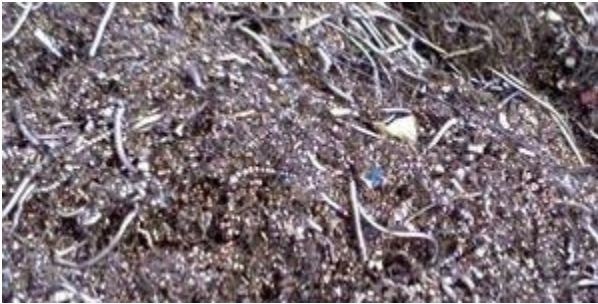
Incomplete Car

A vehicle that is missing one or more of the following: radiator, battery, catalytic converter, motor, transmission, wheels and/or tires.
Required to have a title for the vehicle.



Light Iron

Household appliances (“white” goods), hot water heaters, and misc sheet steel.



Machine Shop Turning/Iron Borings

Unpainted, new production scrap smaller than 12" and nothing coated on.



Plate & Structural Steel

Prepared I-Beams, channels, angles and/or plates, steel gerters, and structural steel from demolition scrap. Clean/dry plate- not to be over 24" wide and 36-60" in length depending on a “3 foot” or “5 foot” specification.



Refrigerators

Could be sold as-is for scrap.



Scrap Iron

All scrap ferrous materials, light or heavy in gauge, free of glass/plastics/debris & contamination.



Sheet Iron

Household appliances (“white” goods), hot water heaters, and misc sheet steel.



Shreddable Steel

Household appliances (“white” goods), hot water heaters, and misc sheet steel.



Steel Shavings

Clean steel turnings, new production scrap smaller than 12" and nothing coated on.



Tin

Household appliances (“white” goods), hot water heaters, and misc sheet steel.



Uncleaned Auto Cast

Whole or part cast iron auto or truck engines. Transmissions may or may not be attached. Also can be called rotors and drums with plastic bare engine blocks.



Unprepared Cast Iron

Assorted iron castings.



Unprepared HMS

Black pipe, longer unprepared pieces of HMS.



Unprepared P&S

Beam (I-Beams), channels, angles and/or plates, steel gerters, and structural steel from demolition scrap. Material is over 36-60" in length depending on a "3 or 5 foot" specification.



Washing Machines

Could be sold as-is for scrap.



Water Heaters

Could be sold as-is for scrap.



Wet Automobile

Has fluids & tires still attached to the vehicles.