

SI-810PR

Barcode Label printing Scale



Pole type



Bench type

A new generation Barcode Label printing Scale solution to speed up your Weighing & Labelling operations and delight your customers with a more accurate and faster checkout experience.



Grocery



Fruit/Vegetable



Bakery/Sweet



Meat/Poultry



Pre-pack

Technical Specifications

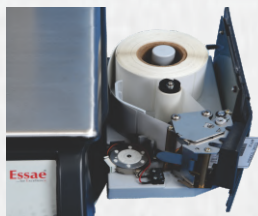
Description	Barcode Label Printing Scale
Capacity/Accuracy	6kg/1g, 15kg/2g, 31kg/5g
Platter Size	280x348mm
Label Width and Length (min~max)	25~54mm, 25~110mm
Label Thickness (max)	170microns
PLU	5000
Printing speed	80 mm/sec
Label Roll Diameter (max)	Outer: 120mm, Inner: 28mm
Standard Interfaces	1 x RS-232 Serial, 1 x Ethernet LAN
Dimension (L x W x D)	490mm x 360mm x 450mm

Salient Features



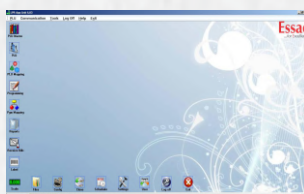
Graphic Display

- Bright LCD Display with green LED back light
- High contrast display for easy viewing in any lighting conditions



Label Printer

- Simple & User friendly design
- Quick changeover of label roll reduces customer waiting time
- Less wastage of labels during calibration
- Sensor for Door & Thermal head open prevents dust entry
- Peel off sensor



PC Application

- PLU upload/download
- Cloning function reduces downtime
- User friendly label designer
- Flexible Barcode programming



Mechanical keyboard

- Long Life & High Reliability
- Better Key click feeling
- Less user fatigue

Barcode formats

EAN 13



Code 128

