

# AIR CYLINDER

## Series A63, A64

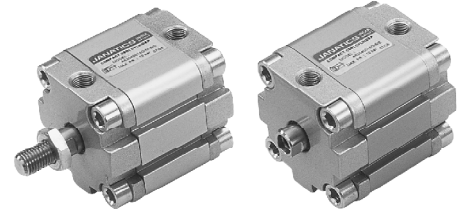
Cat No A63, A64 - 01 - 01

### Double Acting Cylinder (Compact ISO type) Ø32 - 100 mm

As per ISO 21287 standards

#### Features

- Elastomer end cushioning
- Wide varieties of mountings
- Space saving
- Magnetic and Non magnetic version
- Aluminium profile (square) cylinder barrel
- Magnetic sensor common for all sizes  
( Refer Magnetic sensor catalogue )



#### Technical Specifications

|                           |  |    |   |    |                                 |     |
|---------------------------|--|----|---|----|---------------------------------|-----|
| Piston dia ( mm )         | 32                                       | 40 | 50                                      | 63 | 80                              | 100 |
| Standard strokes * ( mm ) | 10 15 20 25 30 40 50 60 70 80            |    |   |    |                                 |     |
| Medium                    | Compressed air - filtered - lubricated   |    |   |    |                                 |     |
| Working pressure range    | 0.5 - 10 bar                             |    |   |    |                                 |     |
| Medium temperature        | 5° - 60° c                               |    |   |    |                                 |     |
| Materials of construction | Aluminium, Nitrile, Steel, Polyurethane  |    |   |    |                                 |     |
| Mountings                 | Basic cylinder,<br>Rear flange,          |    | Foot mounting,<br>Male clevis,          |    | Front flange,<br>Female clevis, |     |
| Accessories               | Clevis foot bracket,<br>Rod end aligner, |    | Wall mounting bracket,<br>Rod end fork, |    | Rod end spherical eye           |     |

\* For Non standard or longer stroke cylinders, contact your regional office, dealer or **JANATICS**

#### Output force ( force in N: 1N = 0.1 kgf)

| Bore dia<br>in mm | Rod dia<br>in mm |         | Working pressure in bar |      |      |      |      |      |      |      |      |
|-------------------|------------------|---------|-------------------------|------|------|------|------|------|------|------|------|
|                   |                  |         | 2                       | 3    | 4    | 5    | 6    | 7    | 8    | 9    | 10   |
| 32                | 12               | Extend  | 145                     | 217  | 289  | 362  | 434  | 507  | 579  | 651  | 724  |
|                   |                  | Retract | 124                     | 187  | 249  | 311  | 373  | 435  | 498  | 559  | 622  |
| 40                | 12               | Extend  | 226                     | 339  | 452  | 565  | 678  | 792  | 905  | 1018 | 1130 |
|                   |                  | Retract | 206                     | 309  | 411  | 514  | 617  | 720  | 823  | 926  | 1029 |
| 50                | 16               | Extend  | 353                     | 530  | 707  | 883  | 1060 | 1237 | 1413 | 1590 | 1767 |
|                   |                  | Retract | 317                     | 476  | 634  | 793  | 952  | 1110 | 1269 | 1427 | 1586 |
| 63                | 16               | Extend  | 561                     | 842  | 1122 | 1403 | 1683 | 1964 | 2244 | 2525 | 2805 |
|                   |                  | Retract | 525                     | 787  | 1050 | 1312 | 1575 | 1837 | 2099 | 2362 | 2624 |
| 80                | 20               | Extend  | 905                     | 1357 | 1809 | 2262 | 2714 | 3167 | 3619 | 4071 | 4524 |
|                   |                  | Retract | 848                     | 1272 | 1696 | 2120 | 2544 | 2969 | 3393 | 3817 | 4241 |
| 100               | 20               | Extend  | 1414                    | 2120 | 2827 | 3534 | 4241 | 4948 | 5655 | 6362 | 7068 |
|                   |                  | Retract | 1357                    | 2036 | 2714 | 3393 | 4071 | 4750 | 5429 | 6107 | 6786 |

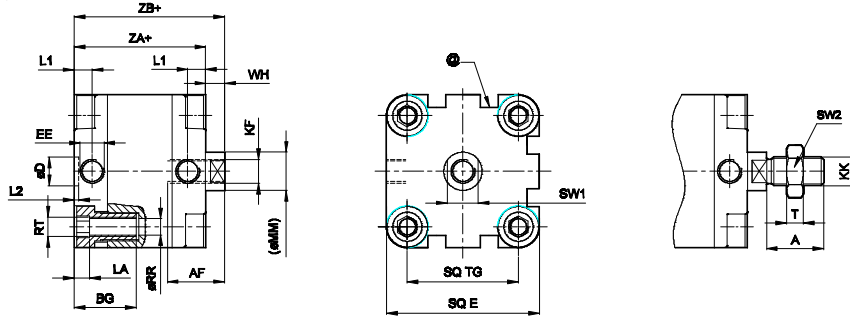
( Above values have been worked out taking frictional loss into consideration )

# AIR CYLINDER

Series A63, A64

Cat No A63, A64 - 01 - 01

## Basic cylinder

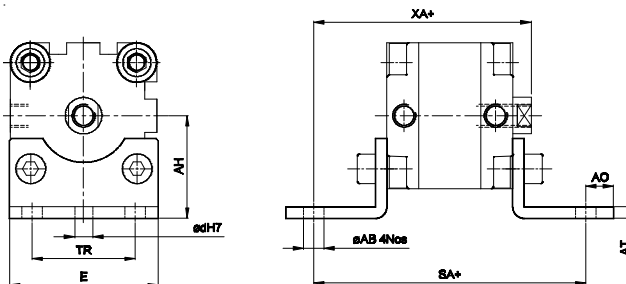


+ Add stroke

| Bore dia | KF       | MM | AF | ØRR min | RT  | SW1 | L1   | LA  | BG min | EE   | □TG  | □E max | ZA | TOL   | ZB | TOL   | WH | TOL     | L2   | TOL   | KK       | A -0.5 | SW2 | T | Stroke tol |
|----------|----------|----|----|---------|-----|-----|------|-----|--------|------|------|--------|----|-------|----|-------|----|---------|------|-------|----------|--------|-----|---|------------|
| 32       | M8x1.25  | 12 | 12 | 5.1     | M6  | 10  | 7.5  | 5.5 | 16     | G1/8 | 32.5 | 45     | 44 | ± 0.5 | 51 | ± 1.6 | 7  | ± 1.6   | 59.5 | ± 1   | M10x1.25 | 19     | 17  | 5 | +2.0       |
| 40       | M8x1.25  | 12 | 12 | 5.1     | M6  | 10  | 7.5  | 5.5 | 16     | G1/8 | 38   | 51     | 45 | ± 0.7 | 52 |       | 7  |         | 60   |       | M10x1.25 | 19     | 17  | 5 |            |
| 50       | M10x1.5  | 16 | 16 | 6.4     | M8  | 13  | 7.5  | 5.5 | 16     | G1/8 | 46.5 | 64     | 45 | ± 0.8 | 53 |       | 8  |         | 62   | ± 1.2 | M12x1.25 | 22     | 19  | 7 |            |
| 63       | M10x1.5  | 16 | 16 | 6.4     | M8  | 13  | 7.5  | 5.5 | 16     | G1/8 | 56.5 | 74     | 49 | ± 0.8 | 57 | ± 2   | 8  | ± 2     | 66   | ± 1.5 | M12x1.25 | 22     | 19  | 7 | +2.50      |
| 80       | M12x1.75 | 20 | 20 | 8.4     | M10 | 17  | 8    | 5.5 | 17     | G1/8 | 72   | 94     | 54 | ± 1   | 64 |       | 10 |         | 75   |       | M16x1.5  | 28     | 24  | 8 |            |
| 100      | M12x1.75 | 20 | 20 | 8.4     | M10 | 17  | 12.5 | 5.5 | 17     | G1/8 | 89   | 111    | 67 | ± 1   | 77 | 10    | 88 | M16x1.5 | 28   | 24    | 8        |        |     |   |            |

@ - T Groove for magnetic sensor, Refer catalogue series AM4

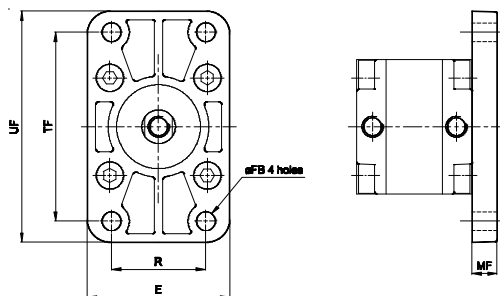
## Foot mounting



+ Add stroke

| Bore dia | ØAB H14 | AO max | AT | AH JS16 | Ød H7 | TR JS14 | E   | SA  | TOL   | XA  | TOL   | Recommended Bolt size |
|----------|---------|--------|----|---------|-------|---------|-----|-----|-------|-----|-------|-----------------------|
| 32       | 7       | 7      | 4  | 33.5    | 5.8   | 32      | 46  | 76  | ±1.25 | 67  | ±1.25 | M6                    |
| 40       | 10      | 9      | 4  | 38      | 7.8   | 36      | 52  | 81  |       | 70  |       | M8                    |
| 50       | 10      | 9      | 5  | 45      | 7.8   | 45      | 65  | 87  | ±1.6  | 74  | ±1.6  | M8                    |
| 63       | 10      | 9      | 5  | 50      | 7.8   | 50      | 75  | 91  |       | 78  |       | M10                   |
| 80       | 12      | 11     | 6  | 63      | 9.8   | 63      | 95  | 106 | ±1.6  | 90  | ±1.6  | M10                   |
| 100      | 14.5    | 13     | 6  | 74      | 11.8  | 75      | 115 | 121 |       | 104 |       | M12                   |

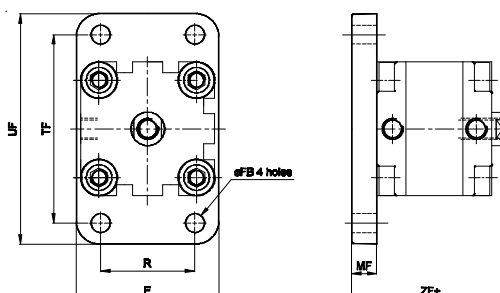
## Front flange



+ Add stroke

| Bore dia | MF | UF  | TF ± 0.3 | R ± 0.3 | E   | ØFB H13 | Recommended Bolt size |
|----------|----|-----|----------|---------|-----|---------|-----------------------|
| 32       | 10 | 80  | 64       | 32      | 50  | 7       | M6                    |
| 40       | 10 | 90  | 72       | 36      | 55  | 9       | M8                    |
| 50       | 12 | 110 | 90       | 45      | 68  | 9       |                       |
| 63       | 12 | 125 | 100      | 50      | 78  | 9       | M10                   |
| 80       | 16 | 155 | 126      | 63      | 100 | 12      |                       |
| 100      | 16 | 185 | 150      | 75      | 120 | 14      | M12                   |

## Rear flange



+ Add stroke

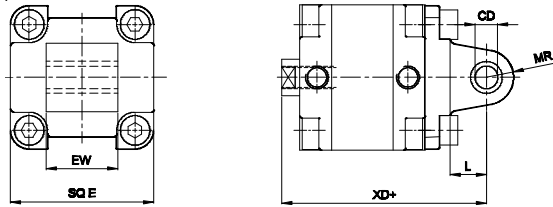
| Bore dia | MF | UF  | TF ± 0.3 | R ± 0.3 | E   | ØFB H13 | ZF | TOL  | Recommended Bolt size |
|----------|----|-----|----------|---------|-----|---------|----|------|-----------------------|
| 32       | 10 | 80  | 64       | 32      | 50  | 7       | 61 | ±1.8 | M6                    |
| 40       | 10 | 90  | 72       | 36      | 55  | 9       | 62 |      | M8                    |
| 50       | 12 | 110 | 90       | 45      | 68  | 9       | 65 |      | M8                    |
| 63       | 12 | 125 | 100      | 50      | 78  | 9       | 69 | ±2.2 | M8                    |
| 80       | 16 | 155 | 126      | 63      | 100 | 12      | 80 |      | M10                   |
| 100      | 16 | 185 | 150      | 75      | 120 | 14      | 93 | M12  |                       |

# AIR CYLINDER

Series A63, A64

Cat No A63, A64 - 01 - 01

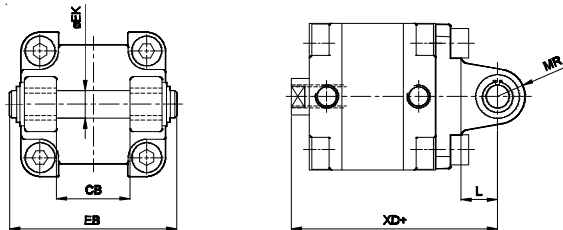
## Male clevis



+ Add stroke

| Bore dia | CD H9 | EW -0.2 -0.6 | L  | MR | E max | XD  | TOL  |
|----------|-------|--------------|----|----|-------|-----|------|
| 32       | 10    | 26           | 12 | 11 | 45    | 73  | ±1.8 |
| 40       | 12    | 28           | 15 | 13 | 51    | 77  |      |
| 50       | 12    | 32           | 15 | 13 | 64    | 80  |      |
| 63       | 16    | 40           | 20 | 17 | 74    | 89  | ±2.2 |
| 80       | 16    | 50           | 20 | 17 | 94    | 100 |      |
| 100      | 20    | 60           | 25 | 21 | 111   | 118 |      |

## Female clevis

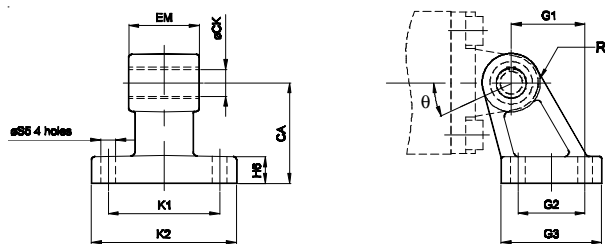


+ Add stroke

| Bore dia | EK e8 | CB H14 | L  | MR | EB max | XD  | TOL  |
|----------|-------|--------|----|----|--------|-----|------|
| 32       | 10    | 26     | 12 | 11 | 56     | 73  | ±1.8 |
| 40       | 12    | 28     | 15 | 13 | 65     | 77  |      |
| 50       | 12    | 32     | 15 | 13 | 73     | 80  |      |
| 63       | 16    | 40     | 20 | 17 | 86     | 89  | ±2.2 |
| 80       | 16    | 50     | 20 | 17 | 106    | 100 |      |
| 100      | 20    | 60     | 25 | 21 | 129    | 118 |      |

## ACCESSORIES FOR AIR CYLINDER Series A63, A64

### Clevis foot bracket ( CETOP - RP 107 P )



| Bore dia | K1 Js14 | G2 Js14 | S5 H13 | CA Js15 | CK H9 | EM -0.2 -0.6 | G1 Js14 | H6 | R1 max. | K2 | G3 | q° | Recommended Bolt size | Part no. @ |
|----------|---------|---------|--------|---------|-------|--------------|---------|----|---------|----|----|----|-----------------------|------------|
| 32       | 38      | 18      | 6.6    | 32      | 10    | 26           | 21      | 8  | 10      | 51 | 31 | 10 | M6                    | AA1032     |
| 40       | 41      | 22      | 6.6    | 36      | 12    | 28           | 24      | 10 | 11      | 54 | 35 | 15 | M6                    | AA1040     |
| 50       | 50      | 30      | 9      | 45      | 12    | 32           | 33      | 12 | 13      | 65 | 45 | 15 | M8                    | AA1050     |
| 63       | 52      | 35      | 9      | 50      | 16    | 40           | 37      | 12 | 15      | 67 | 50 | 15 | M8                    | AA1063     |
| 80       | 66      | 40      | 11     | 63      | 16    | 50           | 47      | 14 | 15      | 86 | 60 | 15 | M10                   | AA1080     |
| 100      | 76      | 50      | 11     | 71      | 20    | 60           | 55      | 15 | 19      | 96 | 70 | 15 | M10                   | AA1100     |

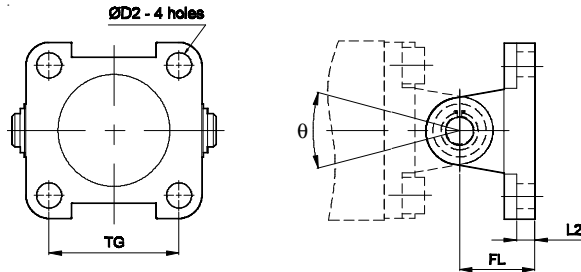
@ Adaptable to cylinder with female clevis

# AIR CYLINDER

Series A63, A64

Cat No A63, A64 - 01 - 01

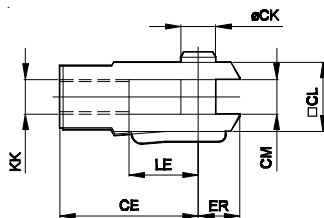
## Wall mounting bracket



| Bore dia | TG   | D2  | L2  | FL | q°  | Recommended Bolt size | Part no. @ | Part no. # |
|----------|------|-----|-----|----|-----|-----------------------|------------|------------|
| 32       | 32.5 | 6.6 | 5.5 | 22 | 90° | M6                    | AV1032     | AW1032     |
| 40       | 38   | 6.6 | 5.5 | 25 | 90° | M6                    | AV1040     | AW1040     |
| 50       | 46.5 | 9   | 6.5 | 27 | 90° | M8                    | AV1050     | AW1050     |
| 63       | 56.5 | 9   | 6.5 | 32 | 90° | M8                    | AV1063     | AW1063     |
| 80       | 72   | 11  | 10  | 36 | 60° | M10                   | AV1080     | AW1080     |
| 100      | 89   | 11  | 10  | 41 | 60° | M10                   | AV1100     | AW1100     |

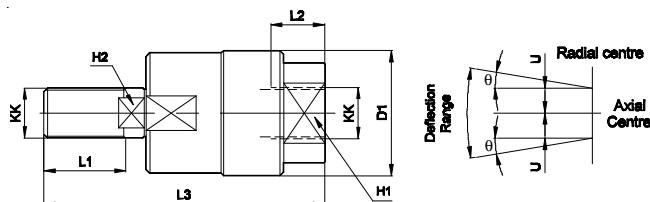
@ Adoptable to cylinder with male clevis  
# Adoptable to cylinder with female clevis

## Rod end Fork ( ISO 8140 )



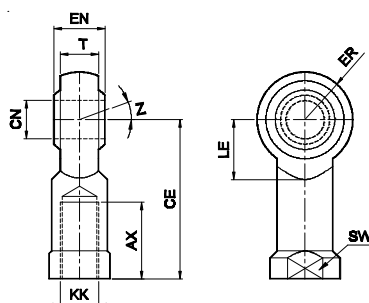
| Bore dia | KK       | CE | CK f8 | CM B12 | LE | ER max | CL | Part no. |
|----------|----------|----|-------|--------|----|--------|----|----------|
| 32 / 40  | M10x1.25 | 40 | 10    | 10     | 20 | 16     | 20 | AF010    |
| 50 / 63  | M12x1.25 | 48 | 12    | 12     | 24 | 19     | 24 | AF012    |
| 80 / 100 | M16x1.5  | 64 | 16    | 16     | 32 | 25     | 32 | AF016    |

## Rod end Aligner



| Bore dia | KK       | L1 | L2 | L3 | H1 | H2 | D1 | U    | ± q° | Part no. |
|----------|----------|----|----|----|----|----|----|------|------|----------|
| 32 / 40  | M10x1.25 | 20 | 14 | 65 | 17 | 8  | 28 | 0.75 | 8    | AR010    |
| 50 / 63  | M12x1.25 | 22 | 18 | 75 | 19 | 10 | 32 | 1    | 8    | AR012    |
| 80 / 100 | M16x1.5  | 25 | 22 | 91 | 27 | 13 | 41 | 1    | 8    | AR016    |

## Rod end spherical eye ( ISO 8139 )









| Bore dia | KK       | CN H9 | T    | EN h12 | CE | LE min | ER max | AX | SW | Z   | Part no. |
|----------|----------|-------|------|--------|----|--------|--------|----|----|-----|----------|
| 32 / 40  | M10x1.25 | 10    | 10.5 | 14     | 43 | 15     | 14     | 20 | 17 | 13° | AP010    |
| 50 / 63  | M12x1.25 | 12    | 12   | 16     | 50 | 17     | 16     | 22 | 19 |     | AP012    |
| 80 / 100 | M16x1.5  | 16    | 15   | 21     | 64 | 22     | 21     | 28 | 22 | 15° | AP016    |

# AIR CYLINDER

Series A63, A64

Cat No A63, A64 - 01 - 01

## How to order

|          |   |   |   |   |   |   |
|----------|---|---|---|---|---|---|
| <b>A</b> |  |  |  |  |  |  |
|          | 63 - Magnetic cylinder<br>64 - Standard cylinder                                  | Piston $\varnothing$  | Stroke mm   | Mountings   |   | M - Male thread   |
|          |   | 032 - $\varnothing$ 32  | 010 - 10  | O - Basic   |   |   |
|          |   | 040 - $\varnothing$ 40  | 015 - 15  | L - Foot Mounting   |   |   |
|          |   | 050 - $\varnothing$ 50  | 020 - 20  | F - Front flange  |   |   |
|          |   | 063 - $\varnothing$ 63  | 025 - 25  | R - Rear flange   |   |   |
|          |   | 080 - $\varnothing$ 80  | 030 - 30  | S - Male clevis   |   |   |
|          |   | 100 - $\varnothing$ 100   | 040 - 40  | D - Female clevis   |   |   |
|          |   |   | 050 - 50  |   |   |   |
|          |   |   | 060 - 60  |   |   |   |
|          |   |   | 070 - 70  |   |   |   |
|          |   |   | 080 - 80  |   |   |   |

### Example:

Ordering no. for standard cylinder with 40 dia bore, 50 mm stroke with Female thread : **A64 040 050 O**

Ordering no. for standard cylinder with 40 dia bore, 50 mm stroke with Male thread : **A64 040 050 O - M**


### Note:

If ordered as 40 dia, 50 mm stroke cylinder, Basic cylinder A64 040 050 O will be supplied.

For repeat order when the details are taken from cylinder nameplate, mention the mounting style separately.

For ordering **Accessories** refer corresponding tables for part numbers.

For ordering individual **Mounting** kits ( If needed separately ) the order numbers are as below

| Piston $\varnothing$ | Foot mounting *   | Front / Rear flange *   | Male clevis *  | Female clevis *   |
|----------------------|---|---|--|---|
|                      |  |  |  |  |
| 32                   | ML2032  | MF1032  | MS1032   | MD1032  |
| 40                   | ML2040  | MF1040  | MS1040   | MD1040  |
| 50                   | ML2050  | MF1050  | MS1050   | MD1050  |
| 63                   | ML2063  | MF1063  | MS1063   | MD1063  |
| 80                   | ML2080  | MF1080  | MS1080   | MD1080  |
| 100                  | ML2100  | MF1100  | MS1100   | MD1100  |

\* Supplied with 4nos. of screws

For your special requirements of cylinders or for further informations contact your regional office, dealer or **JANATICS**