

AIR CYLINDER

Series A20, A21

Cat No A20, A21 - 01 - 01

Double End Double Acting Cylinder (Square type) Ø32 - 100 mm

Features

- Adjustable cushioning at both ends with elastomer pads
- Wide varieties of mountings as per VDMA 24562 standards
- Magnetic and Non magnetic version
- Aluminium profile (square) cylinder barrel
- Magnetic sensor common for all sizes (Refer Magnetic sensor catalogue)



Technical Specifications

Piston dia (mm)	32	40	50	63	80	100
Cushion stroke (mm)	21	23	23	23	28	28
Standard strokes * (mm)	25 50 80 100 125 160 200 250 300 320 400 500					
Medium	Compressed air - filtered - lubricated					
Working pressure	0.5 - 10 bar					
Medium temperature	5 ° - 60 ° c					
Materials of construction	Aluminium, Brass, Nitrile, Steel, Acetal, Polyurethane					
Mountings	Basic cylinder,	Foot mounting,	Flange,	Female clevis,	Trunnion,	
Accessories	Trunnion bracket,	Rod end fork,	Rod end aligner,	Rod end spherical eye		

* For Non standard or longer stroke cylinders, contact your regional office, dealer or **JANATICS**

Output force (force in N: 1N = 0.1 kgf)

Bore dia in mm	Rod dia in mm	Working pressure in bar								
		2	3	4	5	6	7	8	9	10
32	12	124	187	249	311	373	435	498	559	621
40	12	190	285	380	475	570	665	760	855	950
50	16	297	445	594	742	891	1039	1187	1336	1484
63	16	505	757	1009	1261	1514	1766	2018	2270	2523
80	20	816	1225	1633	2041	2449	2857	3266	3674	4082
100	20	1325	1988	2650	3313	3976	4640	5300	5965	6625

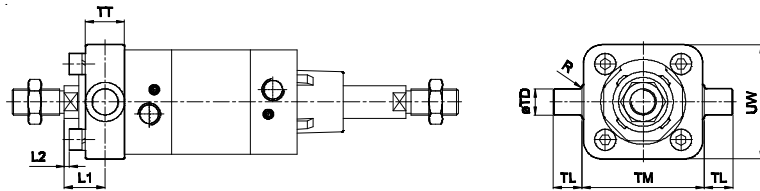
(Above values have been worked out taking frictional loss into consideration)

SQUARE CYLINDER

Series A20, A21

Cat No A20, A21 - 01 - 01

Front & Rear Trunnion

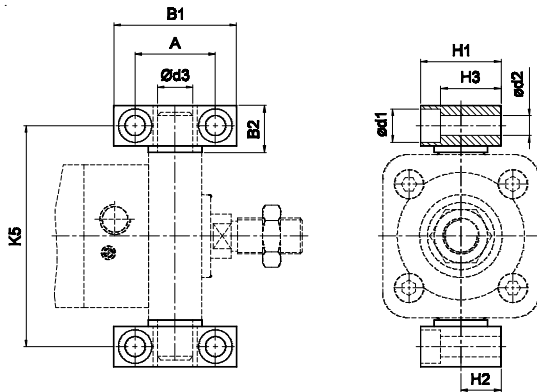


+ Add stroke

Bore dia	TD e9	TL h14	TM h14	UW	TT	R	L1	tol	L2 approx
32	12	12	50	48	16	1	18	±1.5	2
40	16	16	63	55	22	1.5	19		0
50	16	16	75	70	24	1.6	25		3
63	20	20	90	86	28	1.6	23	±2	-1
80	20	20	110	110	32	1.6	30		1.8
100	25	25	132	135	40	2	31		-1.2

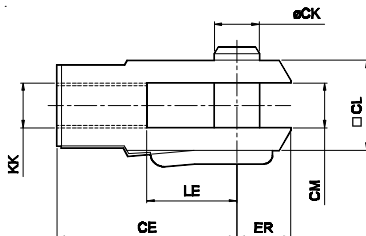
ACCESSORIES FOR AIR CYLINDER Series A20, A21

Trunnion bracket



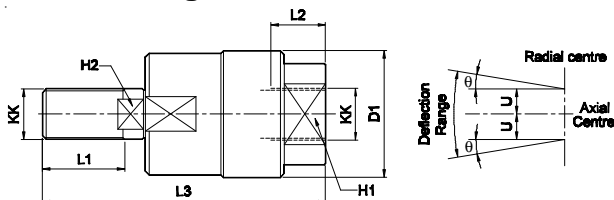
Bore dia	B1	B2	A ± 0.2	d1	d2 H13	d3 H9	H1	H2 ± 0.1	H3	K5 Js14	Part no.
32	46	18	32	11	6.6	12	30	15	23	71	AT032
40	55	21	36	15	9	16	36	18	27	87	AT040
50	55	21	36	15	9	16	36	18	27	99	AT040
63	65	23	42	16.5	11	20	40	20	29	116	AT063
80	65	23	42	16.5	11	20	40	20	29	136	AT063
100	75	28.5	50	20	14	25	50	25	37	164	AT100

Rod end Fork (ISO 8140)



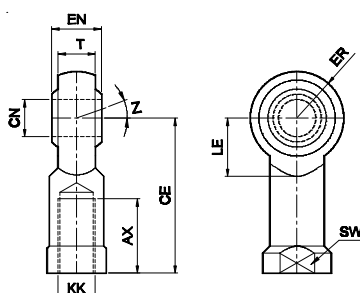
Bore dia	KK	CE	CK f8	CM B12	LE	ER max.	CL	Part no.
32	M10x1.25	40	10	10	20	16	20	AF010
40	M12x1.25	48	12	12	24	19	24	AF012
50 / 63	M16x1.5	64	16	16	32	25	32	AF016
80 / 100	M20x1.5	80	20	20	40	32	40	AF020

Rod end Aligner



Bore dia	KK	L1	L2	L3	H1	H2	D1	U	± q°	Part no.
32	M10x1.25	20	14	65	17	8	28	0.75	8	AR010
40	M12x1.25	22	18	75	19	10	32	1	8	AR012
50 / 63	M16x1.5	25	22	91	27	13	41	1	8	AR016
80 / 100	M20x1.5	30	28	112	32	16	50	1.5	8	AR020

Rod end spherical eye (ISO 8139)



Bore dia	KK	CN H9	T	EN h12	CE	LE min	ER max	AX	SW	Z	Part no.
32	M10x1.25	10	10.5	14	43	15	14	20	17	13°	AP010
40	M12x1.25	12	12	16	50	17	16	22	19		AP012
50 / 63	M16x1.5	16	15	21	64	22	21	28	22	15°	AP016
80 / 100	M20x1.5	20	18	25	77	26	25	33	30		AP020

SQUARE CYLINDER

Series A20, A21

Cat No A20, A21 - 01 - 01

How to order

A

○
20 - Magnetic cylinder
21 - Standard cylinder

○
Piston ø
032 - ø32
040 - ø40
050 - ø50
063 - ø63
080 - ø80
100 - ø100

○
Stroke mm
025 - 25
050 - 50
080 - 80
100 - 100
125 - 125
160 - 160
200 - 200
250 - 250
300 - 300
320 - 320
400 - 400
500 - 500

○
Mountings
O - Basic
L - Foot Mounting
F - Flange
B - Female clevis
N - Trunnion

Example:

Ordering no. for standard cylinder with 40 dia bore, 50 mm stroke with female clevis mounting : A21 040 050 B


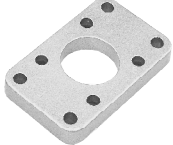


Note:

If ordered as 40 dia, 50 mm stroke cylinder, Basic cylinder A21 040 050 O will be supplied.

For repeat order when the details are taken from cylinder nameplate, mention the mounting style separately.

For ordering **Accessories** refer corresponding tables for part numbers.

For ordering individual **Mounting** kits (If needed separately) the order numbers are as below

Piston Ø	Foot mounting *	Flange *	Female clevis *	Trunnion *
				
32	ML1032	MF1032	MB1032	MT1032
40	ML1040	MF1040	MB1040	MT1040
50	ML1050	MF1050	MB1050	MT1050
63	ML1063	MF1063	MB1063	MT1063
80	ML1080	MF1080	MB1080	MT1080
100	ML1100	MF1100	MB1100	MT1100

* Supplied with 4nos. of screws

For your special requirements of cylinders or for further informations contact your regional office, dealer or **JANATICS**