

AIR CYLINDER

Series A23, A24

Cat No A23, A24 - 01 - 02

Double Acting Cylinder (Square type) Ø32 - 100 mm

As per ISO 6431 / CETOP RP43P / VDMA 24562 standards.

Features

- ❑ Adjustable cushioning at both ends with elastomer pads
- ❑ Wide varieties of mountings as per VDMA 24562 standards
- ❑ Magnetic and Non magnetic version
- ❑ Aluminium profile (square) cylinder barrel
- ❑ Magnetic sensor common for all sizes (Refer Magnetic sensor catalogue)



Technical Specifications

Piston dia (mm)	32	40	50	63	80	100
Cushion stroke (mm)	21	23	23	23	28	28
Standard strokes * (mm)	25 50 80 100 125 160 200 250 300 320 400 500					
Medium	Compressed air - filtered - lubricated					
Working pressure	0.5 - 10 bar					
Medium temperature	5 ° - 60 ° c					
Materials of construction	Aluminium, Brass, Nitrile, Steel, Acetal, Polyurethane					
Mountings	Basic cylinder, Male clevis,	Foot mounting, Female clevis,	Front flange, Front trunnion,	Rear flange, Rear trunnion		
Accessories	Clevis foot bracket, Rod end fork,	Wall mounting bracket, Rod end aligner,	Trunnion bracket, Rod end spherical eye			

* For Non standard or longer stroke cylinders, contact your regional office, dealer or JANATICS

Output force (force in N: 1N = 0.1 kgf)

Bore dia in mm	Rod dia in mm		Working pressure in bar								
			2	3	4	5	6	7	8	9	10
32	12	Extend	145	217	289	362	434	507	579	651	724
		Retract	124	187	249	311	373	435	498	559	621
40	16	Extend	226	339	452	565	678	792	905	1018	1130
		Retract	190	285	380	475	570	665	760	855	950
50	20	Extend	353	530	706	884	1060	1237	1414	1590	1767
		Retract	297	445	594	742	891	1039	1187	1336	1484
63	20	Extend	561	842	1122	1403	1683	1964	2244	2525	2805
		Retract	505	757	1009	1261	1514	1766	2018	2270	2523
80	25	Extend	905	1357	1809	2262	2714	3167	3619	4072	4524
		Retract	816	1225	1633	2041	2449	2857	3266	3674	4082
100	25	Extend	1414	2120	2828	3534	4241	4948	5655	6362	7069
		Retract	1325	1988	2650	3313	3976	4640	5300	5965	6625

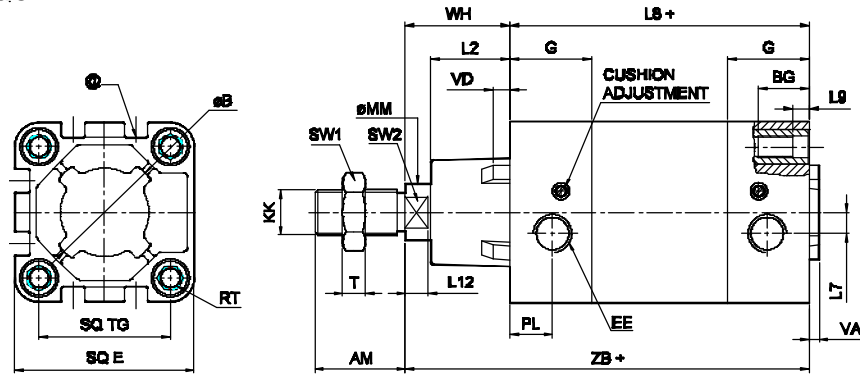
(Above values have been worked out taking frictional loss into consideration)

AIR CYLINDER

Series A23, A24

Cat No A23, A24 - 01 - 02

Basic cylinder

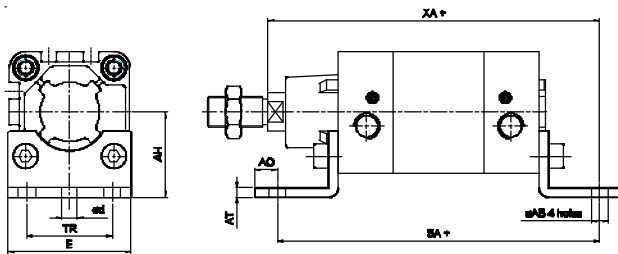


+ Add stroke

Bore dia	KK	AM	MM	SW2	L12	SW1	T	B e11	VD	VA	L2	E max	G	TG	RT	BG min	EE	PL	L7	WH	TOL	ZB	TOL	L8	TOL	L9	Stroke tol
32	M10x1.25	22	12	10	6	17	5	30	6	4	18.5	45	25.5	32.5	M6	16	G1/8	13	5	26		120	94		5		
40	M12x1.25	24	16	13	6.5	19	7	35	6.5	4	20.5	51	29	38	M6	16	G1/4	14.5	5	30 ± 1.3		135 ± 1	105 ± 0.6		5	+2 +0	
50	M16x1.5	32	20	16	8	24	8	40	6.5	4	28	64	29	46.5	M8	16	G1/4	15	7.5	37		143	106 ± 0.7		6		
63	M16x1.5	32	20	16	8	24	8	45	6.5	4	27.5	74	35	56.5	M8	16	G3/8	17	10	37		158 ± 1.1	121		6		
80	M20x1.5	40	25	21	10	30	10	45	6.5	4	34	94	36	72	M10	16	G3/8	18	14	46 ± 1.5		174 ± 1.1	128 ± 0.8		6	+2.5 +0	
100	M20x1.5	40	25	21	10	30	10	55	6.5	4	35	111	40	89	M10	16	G1/2	18	10	51		189	138		6		

@ - T Groove for magnetic sensor, Refer catalogue series AM4

Foot mounting

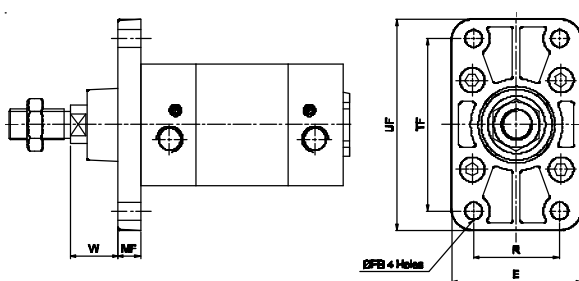


+ Add stroke

Bore dia	TR ±0.3	AB H13	AH Js15	AO max.	AT	E	d*	SA	TOL	XA	TOL	Recommended Bolt size
32	32	7	32	8	4	46	5.8	142		144		M6
40	36	9	36	10	4	52	7.8	161 ± 1.25		163 ± 1.25		M8
50	45	9	45	12	5	65	7.8	170		175		M8
63	50	9	50	12	5	75	7.8	185		190		M8
80	63	12	63	17	6	95	9.8	210 ± 1.6		215 ± 1.5		M10
100	75	14	71	19	6	115	11.8	220		230		M12

* Suitable for reaming

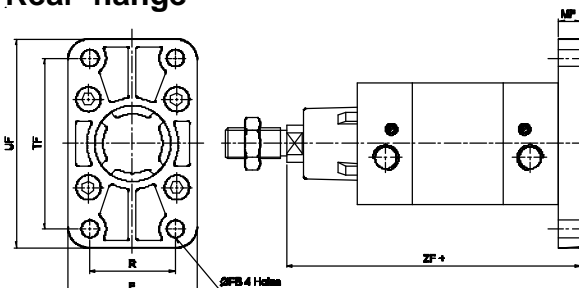
Front flange



+ Add stroke

Bore dia	TF ± 0.3	R ± 0.3	FB H13	MF	UF	E	W	TOL	Recommended Bolt size
32	64	32	7	10	80	50	16		M6
40	72	36	9	10	90	55	20	±1.5	M8
50	90	45	9	12	110	68	25		M8
63	100	50	9	12	125	78	25		M8
80	126	63	12	16	155	100	30	±1.8	M10
100	150	75	14	16	185	120	35		M12

Rear flange



+ Add stroke

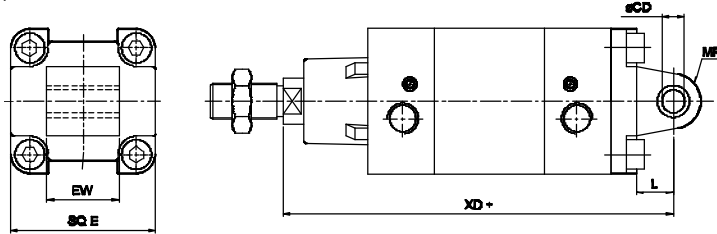
Bore dia	TF ± 0.3	R ± 0.3	FB H13	MF	UF	E	ZF	TOL	Recommended Bolt size
32	64	32	7	10	80	50	130		M6
40	72	36	9	10	90	55	145	±1.25	M8
50	90	45	9	12	110	68	155		M8
63	100	50	9	12	125	78	170		M8
80	126	63	12	16	155	100	190	±1.5	M10
100	150	75	14	16	185	120	205		M12

AIR CYLINDER

Series A23, A24

Cat No A23, A24 - 01 - 02

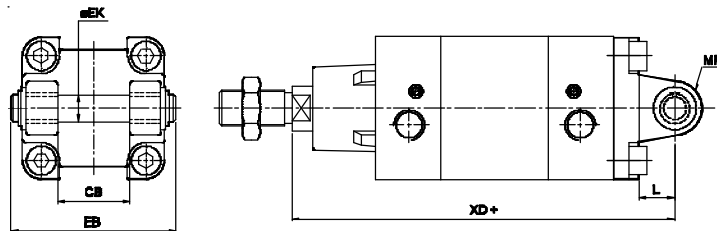
Male clevis



+ Add stroke

Bore dia	CD H9	EW - 0.2 - 0.6	L	MR	E max.	XD	TOL
32	10	26	12	11	45	142	
40	12	28	15	13	51	160	±1.25
50	12	32	15	13	64	170	
63	16	40	20	17	74	190	
80	16	50	20	17	94	210	±1.5
100	20	60	25	21	111	230	

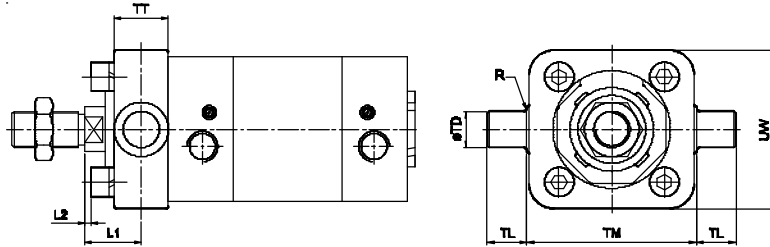
Female clevis



+ Add stroke

Bore dia	EK e8	CB H14	L	MR	EB max.	XD	TOL
32	10	26	12	11	56	142	
40	12	28	15	13	65	160	±1.25
50	12	32	15	13	73	170	
63	16	40	20	17	86	190	
80	16	50	20	17	106	210	±1.5
100	20	60	25	21	129	230	

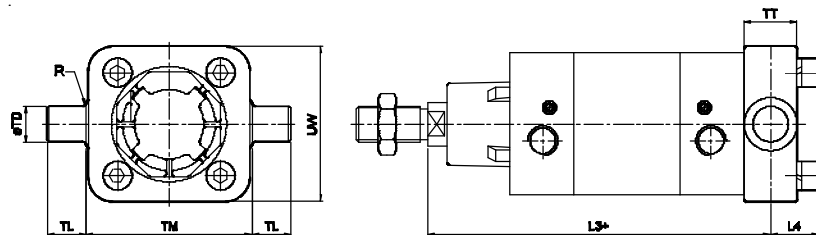
Front trunnion



+ Add stroke

Bore dia	TD e9	TL h14	TM h14	UW	TT	R	L1	tol	L2 approx
32	12	12	50	48	16	1	18		2
40	16	16	63	55	22	1.5	19	±1.5	0
50	16	16	75	70	24	1.6	25		3
63	20	20	90	86	28	1.6	23		-1
80	20	20	110	110	32	1.6	30	±1.8	1.8
100	25	25	132	135	40	2	31		-1.2

Rear trunnion

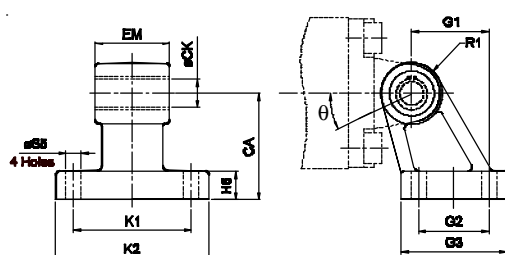


+ Add stroke

Bore dia	TD e9	TL h14	TM h14	UW	TT	R	L3	tol	L4 approx
32	12	12	50	48	16	1	128		16
40	16	16	63	55	22	1.5	146	±1.5	19
50	16	16	75	70	24	1.6	155		22
63	20	20	90	86	28	1.6	172		24
80	20	20	110	110	32	1.6	190	±1.8	29
100	25	25	132	135	40	2	209		33

ACCESSORIES FOR AIR CYLINDER Series A23, A24

Clevis foot bracket (CETOP - RP 107 P)



Bore dia	K1 Js14	G2 Js14	S5 H13	CA Js15	CK H9	EM - 0.2 - 0.6	G1 Js14	H6	R1 max.	K2	G3	q°	Recommended Bolt size	Ordering no. @
32	38	18	6.6	32	10	26	21	8	10	51	31	10	M6	AA1032
40	41	22	6.6	36	12	28	24	10	11	54	35	15	M6	AA1040
50	50	30	9	45	12	32	33	12	13	65	45	15	M8	AA1050
63	52	35	9	50	16	40	37	12	15	67	50	15	M8	AA1063
80	66	40	11	63	16	50	47	14	15	86	60	15	M10	AA1080
100	76	50	11	71	20	60	55	15	19	96	70	15	M10	AA1100

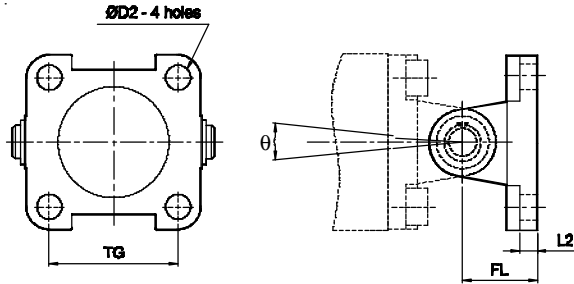
@ Adaptable to cylinder with female clevis

AIR CYLINDER

Series A23, A24

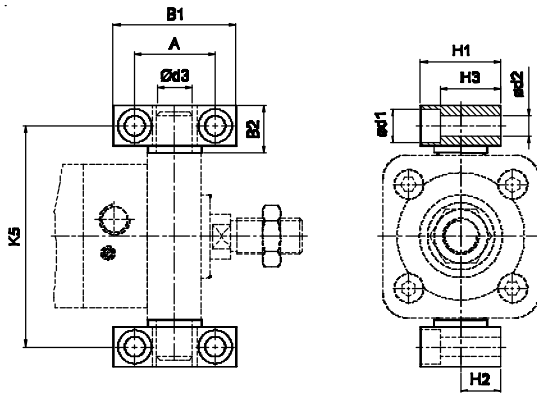
Cat No A23, A24 - 01 - 02

Wall mounting bracket



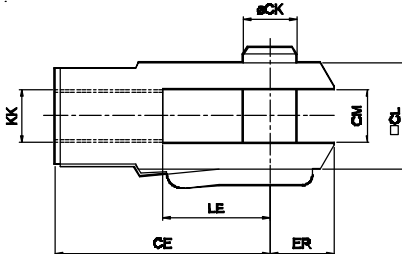
Bore dia	TG	D2	L2	FL	q°	Recommended Bolt size	Ordering no. @	Ordering no. #
32	32.5	6.6	5.5	22	90	M6	AV1032	AW1032
40	38	6.6	5.5	25	90	M6	AV1040	AW1040
50	46.5	9	6.5	27	90	M8	AV1050	AW1050
63	56.5	9	6.5	32	90	M8	AV1063	AW1063
80	72	11	10	36	60	M10	AV1080	AW1080
100	89	11	10	41	60	M10	AV1100	AW1100

Trunnion bracket



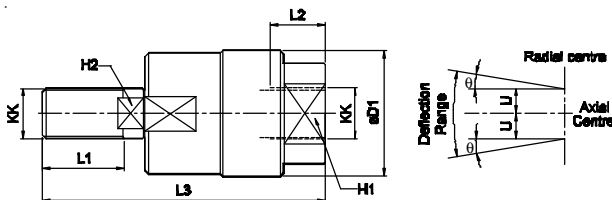
Bore dia	B1	B2	A ± 0.2	d1	d2 H13	d3 H9	H1	H2 ± 0.1	H3	K5 Js14	Ordering no.
32	46	18	32	11	6.6	12	30	15	23	71	AT032
40	55	21	36	15	9	16	36	18	27	87	AT040
50	55	21	36	15	9	16	36	18	27	99	AT040
63	65	23	42	16.5	11	20	40	20	29	116	AT063
80	65	23	42	16.5	11	20	40	20	29	136	AT063
100	75	28.5	50	20	14	25	50	25	37	164	AT100

Rod end Fork (ISO 8140)



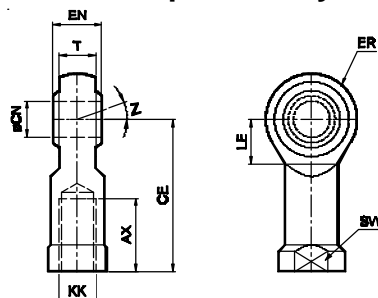
Bore dia	KK	CE	CK f8	CM B12	LE	ER max.	□CL	Ordering no.
32	M10x1.25	40	10	10	20	16	20	AF010
40	M12x1.25	48	12	12	24	19	24	AF012
50 / 63	M16x1.5	64	16	16	32	25	32	AF016
80 / 100	M20x1.5	80	20	20	40	32	40	AF020

Rod end Aligner



Bore dia	KK	L1	L2	L3	H1	H2	D1	U	± q°	Ordering no.
32	M10x1.25	20	14	65	17	8	28	0.75	5	AR010
40	M12x1.25	22	18	75	19	10	32	1	5	AR012
50 / 63	M16x1.5	25	22	91	27	13	41	1	5	AR016
80 / 100	M20x1.5	30	28	112	32	16	50	1.5	5	AR020

Rod end spherical eye (ISO 8139)



Bore dia	KK	CN H9	T	EN h12	CE	LE min	ER max	AX	SW	Z	Ordering no.
32	M10x1.25	10	10.5	14	43	15	14	20	17	13°	AP010
40	M12x1.25	12	12	16	50	17	16	22	19	13°	AP012
50 / 63	M16x1.5	16	15	21	64	22	21	28	22	15°	AP016
80 / 100	M20x1.5	20	18	25	77	26	25	33	30	15°	AP020

AIR CYLINDER

Series A23, A24

Cat No A23, A24 - 01 - 02

How to order

A

Model		Piston Ø (mm)		Stroke (mm)		Mountings	
23	Magnetic cylinder	032	- Ø 32	025	- 25	O	- Basic
24	Standard cylinder	040	- Ø 40	050	- 50	L	- Foot Mounting
		050	- Ø 50	080	- 80	F	- Front Flange
		063	- Ø 63	100	- 100	R	- Rear Flange
		080	- Ø 80	125	- 125	S	- Male Clevis
		100	- Ø 100	160	- 160	D	- Female Clevis
				200	- 200	M	- Rear Trunnion
				250	- 250	N	- Front Trunnion
				300	- 300		
				320	- 320		
				400	- 400		
				500	- 500		

Example:

Ordering no. for standard cylinder with 40 dia bore, 50 mm stroke with female clevis mounting : A24 040 050 D


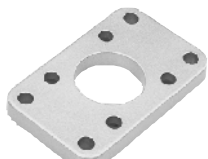
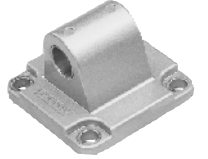


Note:

If ordered as 40 dia, 50 mm stroke cylinder, Basic cylinder A24 040 050 O will be supplied.

For repeat order when the details are taken from cylinder nameplate, mention the mounting style separately.

For ordering **Accessories** refer corresponding tables for part numbers.

For ordering individual **Mounting** kits (If needed separately) the order numbers are as below

Piston Ø	Foot mounting *	Front / Rear flange *	Male clevis *	Female clevis *	Front / Rear trunnion *
					
32	ML1032	MF1032	MS1032	MD1032	MT1032
40	ML1040	MF1040	MS1040	MD1040	MT1040
50	ML1050	MF1050	MS1050	MD1050	MT1050
63	ML1063	MF1063	MS1063	MD1063	MT1063
80	ML1080	MF1080	MS1080	MD1080	MT0080
100	ML1100	MF1100	MS1100	MD1100	MT0100

* Supplied with 4nos. of screws

For your special requirements of cylinders or for further informations contact your regional office, dealer or JANATICS

Subject to change