

# AIR PREPARATION UNITS

## FILTER REGULATOR COMBINATION Series FRC1

Cat No FRC1-02

### FILTER REGULATOR COMBINATION 1/4 3/8 1/2

#### Features

- ❑ Modular type
- ❑ Suitable for panel mounting
- ❑ Filter
  - Bronze filtering element.
  - Separator and shield for efficient moisture separation.
- ❑ Regulator
  - Diaphragm operated, relieving type.
  - Pressure compensated by Balanced poppet.
  - Flow compensated in models FRC14 and FRC15 for faster response.
  - Non raising ' Press to lock ' adjusting knob for locking at any set pressure.
- ❑ Steel bowl guard , bayonet type on FRC14 & FRC15 models and threaded type on FRC13 model.
- ❑ Good flow and regulating characteristics.



#### Technical Specifications

Model	FRC 13	FRC 14	FRC 15
Medium	Compressed air		
Port size	G 1 / 4	G 3 / 8	G 1 / 2
Pressure gauge port size	G 1 / 8	G 1 / 8	G 1 / 8
Flow rate lts / min @	550	1800	3000
Max Supply pressure	10 bar		
Regulating Pressure Range #	0.2 - 2 bar, 0.2 - 4 bar, 0.5 - 7 bar, 0.5 - 10 bar (Standard)		
Ambient / Medium temperature	5 ° – 60 ° C		
Filteration #	5 µm, 25 µm, 40 µm (standard), 50 µm, 100 µm		
Bowl capacity (at maximum condensate level)	9 ml	32 ml	44 ml
Bowl material	Polycarbonate		
Installation	Vertical (as shown in the picture)		
Materials of construction	Aluminium, Bronze, Brass, Steel, Acetal, Polycarbonate, SS, Nitrile		
Weight	0.30 Kg	0.58 Kg	1.27 Kg
Optional accessories *	Clamp, Modular mounting kit, Pressure gauge		

@ Supply pressure 7 bar , Set pressure 6 bar , Pressure drop  $\Delta p = 1$  bar ( For standard models )

# For details see " How to order "

\* For details refer optional accessories Cat No. APA - 01

#### Precautions

1. Note the direction of flow before installation and connect piping accordingly.
2. Flush pipings for dirt , dust , rust and other foreign particles.
3. Install in clean atmosphere
4. Nipples of taper threads ( R ) to be used with teflon tape . Ensure Teflon tape does not enter the unit during tightening. Nipples of straight threads ( G ) to be used with sealing washer.
5. Polycarbonate bowls may get damaged and possibly fail if exposed to synthetic oils , thinner , solvents , trichloroethylene kerosene or other aromatic hydrocarbons.

#### Pressure Setting

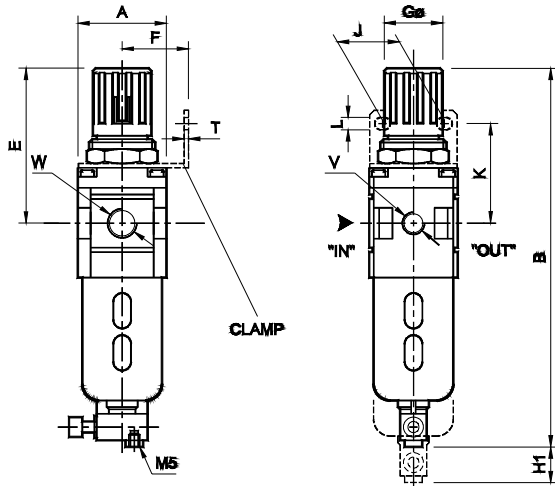
Pull the knob and adjust by turning the knob clockwise to increase the pressure. Push the knob back to its locked position. ( Turning the knob counter clockwise will reduce the pressure )

# AIR PREPARATION UNITS

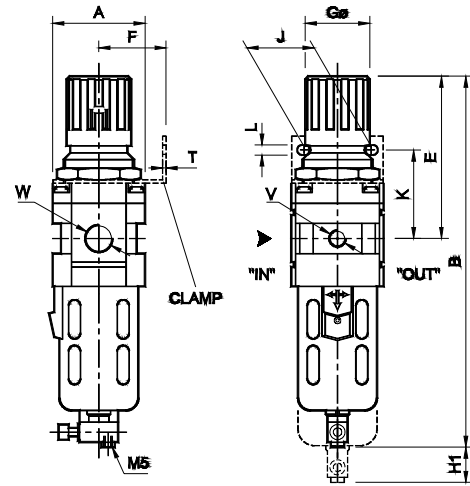
## FILTER REGULATOR COMBINATION Series FRC1

Cat No FRC1-02

Model FRC 13



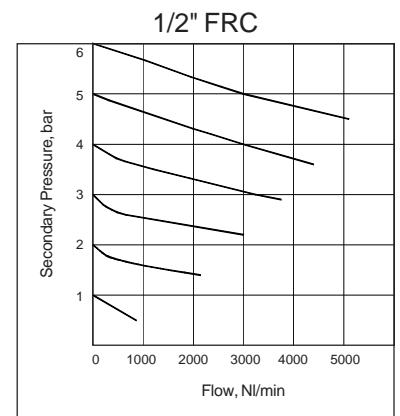
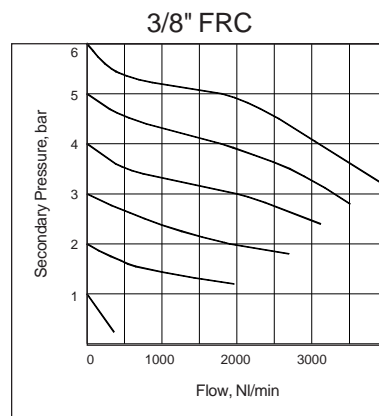
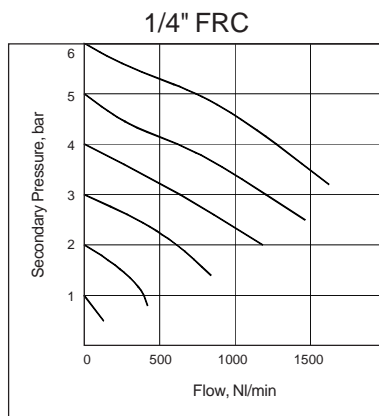
Model FRC 14 & FRC 15



For Details of Clamp see optional accessories Cat No: APA - 01

Model	W	V	A	B	E	K	F	Gø	J	L	T	H1
FRC13	G 1/4	G 1/8	40 <sup>□</sup>	170	68	45	30	28	28	5.5	2	50
FRC14	G 3/8	G 1/8	55 <sup>□</sup>	220	95	53	40	40	40	6.5	2	55
FRC15	G 1/2	G 1/8	70 <sup>□</sup>	280	125	62	50	51	55	8.5	2	80

### Flow Graphs



### How to order

**FRC 1**



**Body & Port size**  
361 -- G 1/4  
462 -- G 3/8  
563 -- G 1/2



**Filtration µm**  
1 --- 5 µm  
2 --- 25 µm  
3 --- 40 µm (Standard)  
4 --- 50 µm  
5 --- 100 µm



**Pressure Range**  
1 --- 0.2 - 2 bar  
2 --- 0.2 - 4 bar  
3 --- 0.5 - 7 bar  
4 --- 0.5 - 10 bar (Standard)

**Ordering example** :- Filter Regulator Combination - 3/8 size ( with G 3/8 port ) with 5 µm Filter and pressure range 0.5 - 7 bar  
Ordering No: FRC 146213. If ordered as FRC 3/8 our standard model FRC 146234, with 40 µm Filter and pressure range 0.5 - 10 bar will be supplied.