

HYDRANT VALVE, SINGLE OUTLET

STAINLESS STEEL-SS316, ISI MARKED



Hydrant valves (also called Landing valves) provide the means to draw water for firefighting from the Fire water piping network. They are normally mounted onto stand posts, fitted on the fire water network.

Brief Description : Hydrant Valve, ISI marked (IS:5290), made of Stainless Steel (SS316), having 75 mm flanged inlet, and 63 mm Female Instantaneous outlet, provided with C.I. handwheel for operation, and PVC blank cap with chain. Body duly painted with 2 coats of superior quality paint. H.P. tested to 21 kgf/cm² (body) and 14 kgf/cm² (seat). Flow 900 lpm (min) at 7 kgf/cm²

1.0 GENERAL DATA

1.1	Make	AAAG
1.2	Size	63 mm
1.3	Inlet	Flanged - 80mm (75mm) NB, IS: 1538 / ANSI B 16.5 150 #
1.4	Outlet	63mm Female Instantaneous Adaptor
1.5	Reference Standard	IS: 5290 TYPE A

2.0 MATERIAL OF CONSTRUCTION

2.1	Body, Bonnets, Female outlet and parts	IS: 3444 Gr. IV (SS316)
2.2	Spindle	IS: 3444 Gr. I (SS316)
2.3	Spring	Stainless Steel Wire IS: 6258
2.4	Hand Wheel	C.I. IS: 210 FG 200
2.5	Washer	Rubber IS: 937 Type A

3.0 TESTING AND QUALITY CONTROL

3.1	Dimensional check	Dimensions as per IS:5290 Type A (See drawing below)
3.2	Water Tightness Seat Test	14 kgf/cm ² for 2.5 minutes.
3.3	Hydrostatic Pressure Test	21 kgf/cm ² for 2.5 minutes.
3.4	Performance requirements	Flow test : 900 lpm (min) at 7 kg/cm ² pressure
3.5	Documentation	Internal inspection report, supplier's certificates, approved laboratory test certificates

4.0 OPERATIONAL/ TECHNICAL DATA

4.1	Working pressure range	upto 10 Kg/cm ²
4.2	Weight (approx.)	4.0 Kgs.

5.0 FINISH

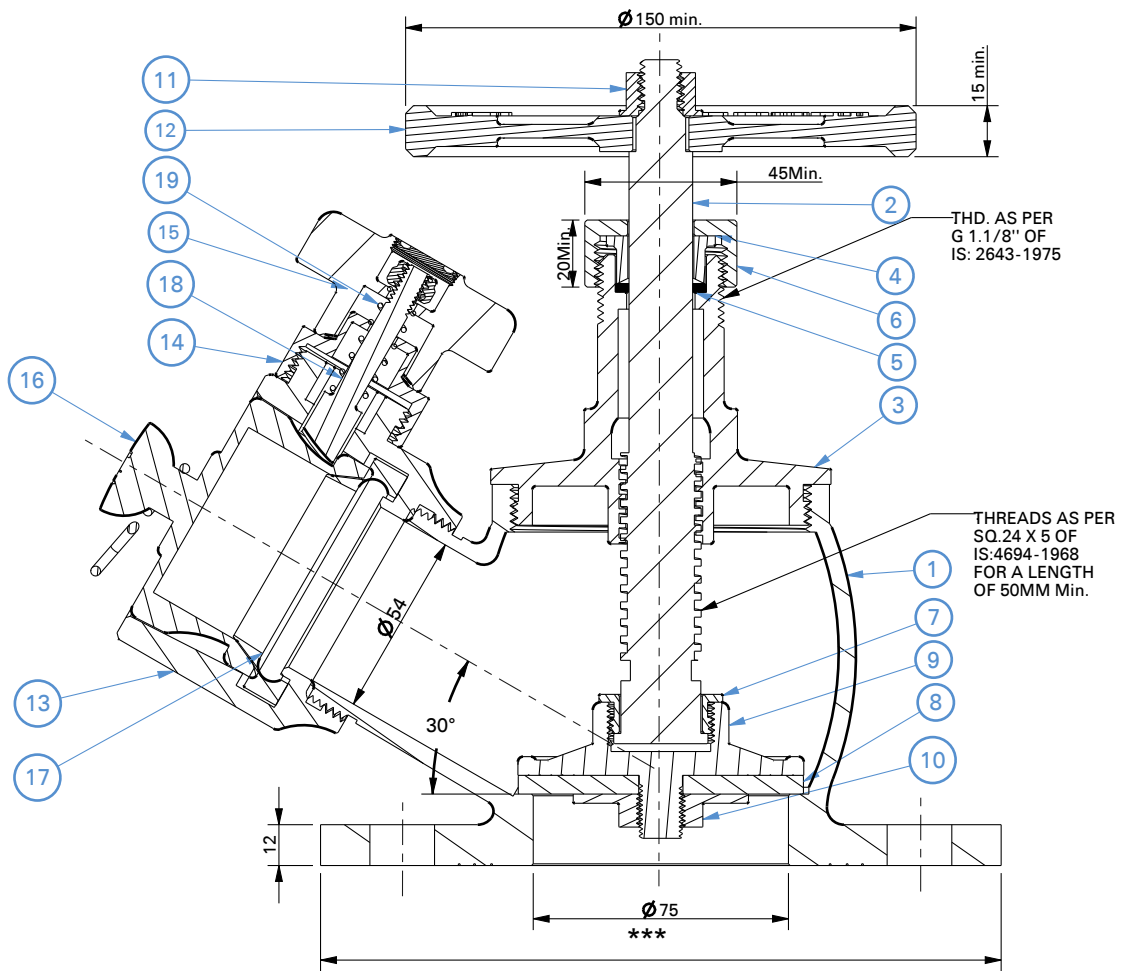
5.1	Body	Painted - Fire Red Color as per IS: 5 Shade No. 536
5.2	Wheel	Painted - Black Paint
5.3	Parts	Polished

6.0 APPROVALS & MARKING

6.1	Approvals	ISI marked (Licence No. 1674159)
6.2	Marking on Hydrant valve	BHOJEBROS / Size/ Year of Manufacture/ ISI No/ Sl. No

6.0 WARRANTY

6.1	Warranty & Guarantee	12 Months from the date of supply
-----	----------------------	-----------------------------------



FLANGE DIMENSIONS

TABLE	FLANGE Ø	PCD	HOLES	HOLE Ø
IS: 1538	200 mm	160 mm	4	19 mm
ANSI B16.5 150#	190 mm	152 mm	4	19 mm

1	BODY	SS (IS:3444 Gr.4)	11	HEX.NUT	M.S.
2	SPINDLE	SS 316	12	HAND WHEEL	C.I. IS : 210
3	BONNET	SS (IS:3444 Gr.4)	13	FEMALE OUTLET	SS (IS:3444 Gr.4)
4	GLAND BUSH	SS (IS:3444 Gr.4)	14	LOWER LUG	SS (IS:3444 Gr.4)
5	GLAND PACKING	ASBESTOSE ROPE	15	UPPER LUG	SS (IS:3444 Gr.4)
6	GLAND NUT	SS (IS:3444 Gr.4)	16	BLANK CAP	PVC
7	CHECK NUT (SPINDLE)	SS (IS:3444 Gr.4)	17	RUBBER RING	RUBBER IS:937
8	SEAT WASHER	RUBBER IS:937	18	CAM TOOTH	SS (IS:3444 Gr.4)
9	STOP VALVE	SS (IS:3444 Gr.4)	19	SPRING	SS (IS:6528)
10	SEAT CHECK NUT	SS (IS:3444 Gr.4)	20	CHAIN	GALVANIZED
NO.	DESCRIPTION	MATERIAL	NO.	DESCRIPTION	MATERIAL
PART LIST			PART LIST		

HYDRAULIC TEST:

SEAT TIGHTNESS	:14KGF/CM2. (FOR 2.5 MINIUTES)
BODY	:21KGF/CM2. (FOR 2.5 MINIUTES)
FLOW TEST	:900 LPM MIN @ 7KGF / CM2.



Shah Bhogilal Jethalal & Bros.

AHMEDABAD

TITLE :

Hydrant Valve, Single Outlet
(63 mm), SS 316, ISI Marked

SCALE

N.T.S

DRAWING NO:

SM104-63ISI

SHEET

1 OF 1

REV.

0