

Matt



450x300mm



Wall Tiles



- Revestimientos de digitales  
- Rivestimenti digitale



3001 L



3001 HL 1



3002 L



3002 HL 1



3003 D



3001 HL 2

3001 F



3002 D



3002 F



3003 L



3003 HL 1



3006 L



3006 HL 1



3003 D



3003 F



3006 D



3006 F



3005 L



3005 HL 1



3008 L



3008 HL 1



3005 D



3005 HL 2

3005 F



3008 D



3008 HL 2

3008 F



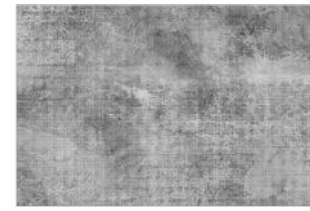
3004 L



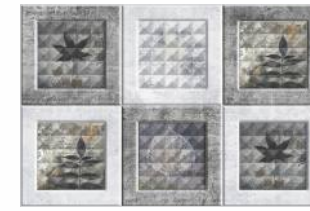
3004 HL 1



3004 HL 3



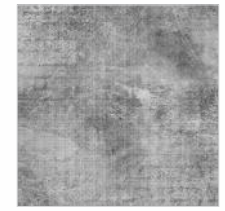
3004 D



3004 HL 2



3004 HL 4



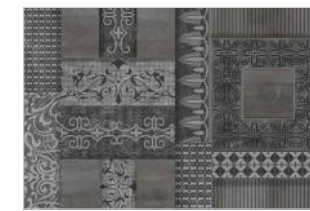
3004 F



3007 L



3007 HL 1



3007 HL 3



3007 D



3007 HL 2



3007 F



Matt

450x300mm

Wall Tiles

- Revestimientos de digitales  
- Rivestimenti digitale



3009 L



3009 HL 1



3013 L



3013 HL 1



3009 D



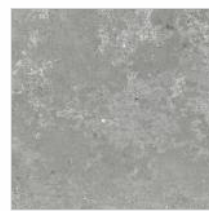
3009 HL 2



3013 D



3013 HL 2



3009 F



3013 F



3010 L



3010 HL 1



3011 L



3011 HL 1



3010 D



3010 HL 2

3010 F



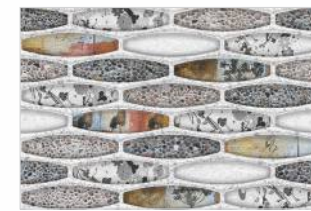
3011 D



3011 F



3012 L



3012 HL 1



3014 L



3014 HL 1



3012 D



3012 F



3014 D



3014 F



3015 L



3015 HL 1



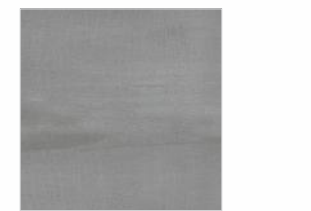
3016 L



3016 HL 1



3015 D



3015 F



3016 D



3016 F

Elevation

450x300mm

Wall Tiles

## MATT ELEVATION



EL 01



EL 02



EL 03



EL 04



EL 05



EL 06



EL 07



EL 08



EL 09



EL 10



## GLOSSY ELEVATION



EL 2050



EL 2051



EL 2054

## TECHNICAL SPECIFICATION

Characteristics	Euro Standards EN - 159 / IS 13753	Our Value
<b>DIMENSION &amp; SURFACE QUALITY</b>		
1) Dimension	±0.5%	±0.2%
2) Deviation in Thickness	±0.6 mm	±0.2 mm
3) Straightness of sides	±0.3%	±0.2%
4) Rectangularity	±0.5%	±0.3%
5) Surface Flatness	±0.5%	±0.3%
6) Surface Quality	Min 95%	Min 96%
<b>PHYSICAL PROPERTIES</b>		
1) Water Absorption	> 10%	13.5%
2) Bending Strength	> 150 Kg/Cm2	200 - 250 Kg/Cm2
3) Scratch hardness (Mohs)	Min 3	Min 3
4) Crazeing	1 Cycle	No Crazeing at 5 Cycles
<b>CHEMICAL PROPERTIES</b>		
1) Staining Resistance	Min Class 2	Resistance to all Acids
2) Household Chemical	Min Class B	And Alkalies & Household Chemicals, except Hydro Flouric Acid
<b>THERMAL PROPERTIES</b>		
1) Thermal Shock	Resistant to 10 Cycles	CONFORMS
2) Thermal Expansion	Max-9E- 06	CONFORMS

Our conformity to the above standard is applicable only for premium quality

## PACKING DETAIL

Size	Thickness (mm)	Tiles Per Box (Pcs.)	Coverage Area Per Box (Sq.m.)	Wt. of Box (Kgs.)
750 x 250mm	10	5	0.94	16.5
600 x 300mm	9.5	5	0.90	14.5
450 x 300mm	9.0	6	0.81	11.5
300 x 300mm	9.0	9	0.81	10.5

## Note :

1. Certain amount of size and shade variation is inherent in all ceramic products.
2. Our conformity to the above Fast is applicable only for Quality.
3. Colour shown are as accurate as the limitations of the printing process will allow. Prospective customers are advised to inspect a sample of the tile before ordering. Every effort has been made to ensure the accuracy of the information given. However the company reserve the right to change the specification without prior notice. Sometimes variations in shade or size being inherent to ceramic industry may occur. It is suggest to check the tiles before purchase any laying as the company dose not accept responsibility once the tiles are laid.