

# STAHL - SJD2S, Steel Jet Hand Dryer

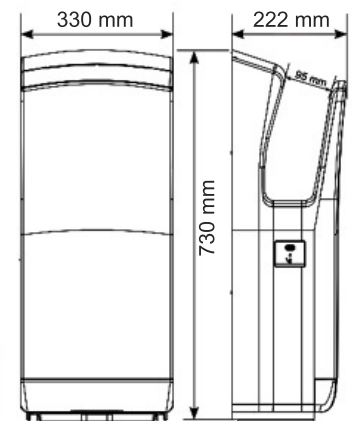
## TECHNICAL DATA

### TECHNICAL SPECIFICATIONS

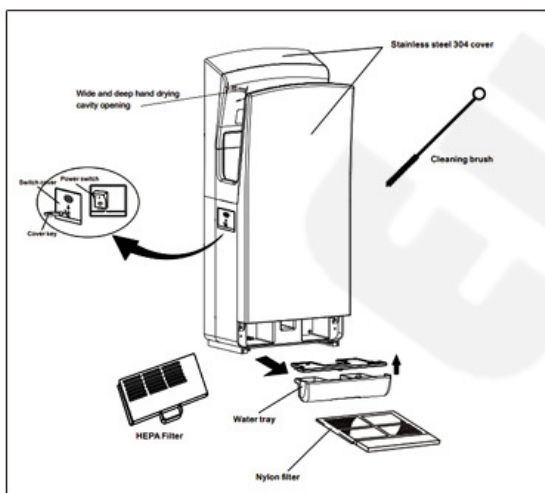
- Construction: Stainless Steel
- Mounting: Wall mounted on pressed galvanized steel back plate
- Operation: Touch-Free Infra-Red activation
- Hand Dry Time: Less than 10 seconds
- Auto Cutoff: 18 seconds
- Noise Level: 80 db(A)
- Motor: Brush AC type
- Motor Speed: 18,000 RPM
- Filter - HEPA and Air Filters
- Voltage: 220V/50Hz
- Rated Power: 1650W
- Current: 7.5A
- Water Splash: IPx1
- Blowing Volume: 150m<sup>3</sup>/h
- Air Speed: 86 m/s
- Weight: 11 kgs
- Colour: Steel Matt Finish

### FEATURES

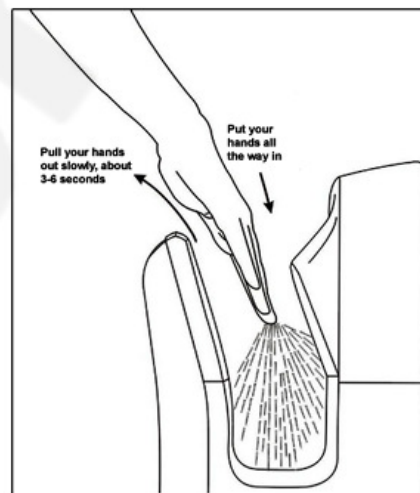
- Saves Electricity and Costs less to run - Dries Hand in less than 10 Seconds using 80% less energy than Normal warm Hand Dryer
- Carbon Footprint - The best Hand Drying alternative for environment with 70% smaller carbon footprint than Paper Towels
- Cost Effective - Compared to paper towels, the Euronics Jet Hand Dryer costs 95% less to operate and represents 83% less impact on our environment.
- Jet Hand Dryer dries 22 PAIR OF HANDS in the cost of 1 Paper Towel
- More Hygienic – Scraping water from hands like a windshield wiper (using air pressure not heating element), it's more hygienic than Normal Warm Dryer
- Cleanliness - Where paper towels dispensers contribute to waste paper thrown on the floor, the Euronics Jet Hand Dryer keeps a clean and sanitary environment at all times.
- Labor Cost - Further expenses related to paper towels include having employees fill dispensers, pick up litter, empty trash bins.



(Dimensions in mm)



### PART NAMES

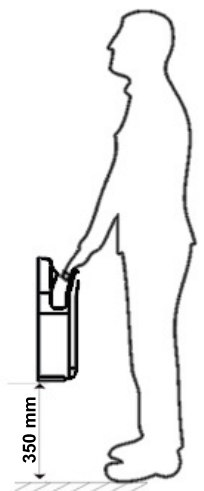


### USING

### RECOMMENDED MOUNTING HEIGHTS

From floor level

Men	Ladies	Disabled
13 inch	11 inch	4 inch
350 mm	300 mm	100 mm



# Euronics