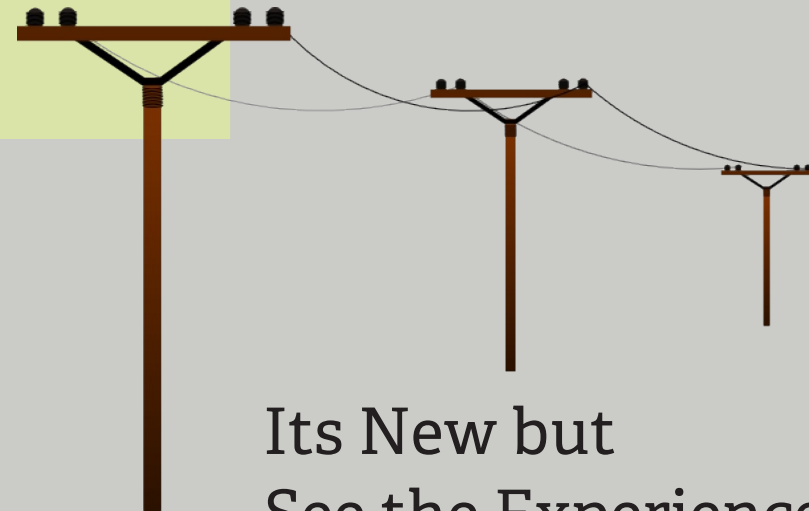
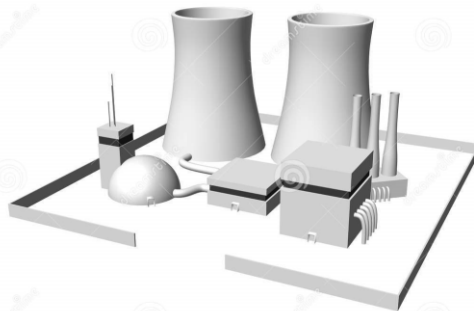
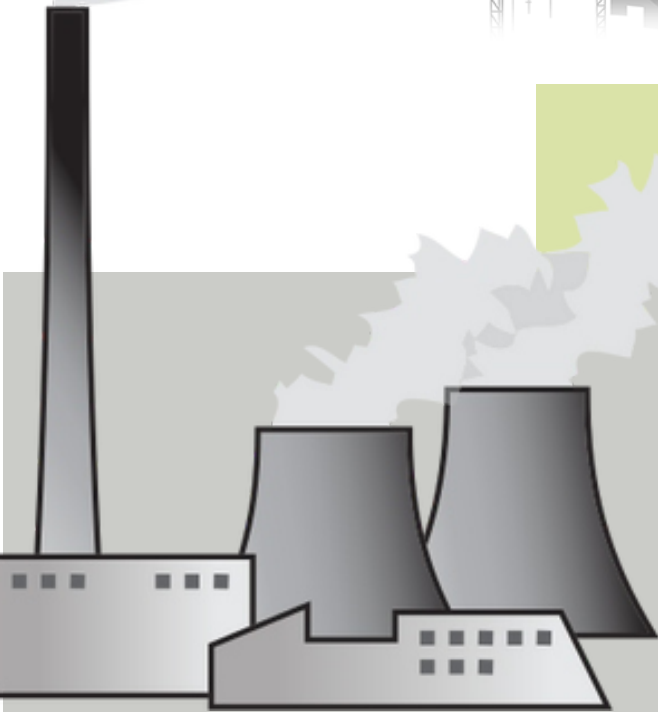


NICXs

Energy Management Systems



Its New but
See the Experience

INDUSTRIAL ENERGY MANAGEMENT SYSTEM

The objective of Energy Management is to achieve and maintain optimum energy procurement and utilization, throughout the organization and to minimize energy costs / waste without affecting production & quality to minimize environmental effects.

Siliconicxs Energy Management System is the key to a systematic approach for decision-making in the area of energy management. It attempts to balance the total energy inputs with its use, and serves to identify all the energy streams in a facility. It quantifies energy usage according to its discrete functions.

Siliconicxs Energy Management is an effective tool in defining and pursuing comprehensive energy management Systems.

Energy Management System approach-understanding energy costs, Energy Loss, Energy performance, Productivity, Maintenance, Environment, Matching energy use to requirement, Maximizing system efficiencies, Optimizing the input energy requirements and Fuel and energy substitution.

Explore.....Electrical Data's through NICXs Software



Travel through the data and understand each and every details of energy consumption. Our software is an engine of reports which is fuelled by very sensitive data.

FUNCTION OF ENERGY MANAGEMENT

3 ARCHIVING

1 MONITORING

Visualization of chosen parameters from monitored devices
Energy to Temperature

Visualization with multiple tabs (views), with possibility of multiple widgets (graphic elements presenting measured values)

Available widgets: Digital field, table, graph (time plots), Gauge View

Archiving of chosen parameters in software's internal database

Presentation of archived data as tables and time plots

Data can be export to CSV,PDF file

2 VISUALIZATION

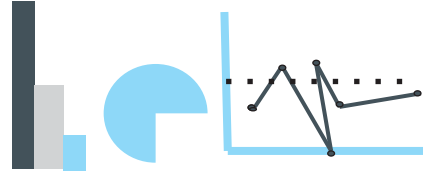
Remote Monitoring of Overall Plant

Easy alarm settings (mathematic operations)

Visual signaling of alarm events

FUNCTION OF ENERGY MANAGEMENT

4 REPORTING



Minute , Hourly, Daily ,weekly and Monthly reports of chosen Parameters,archived data

Special Energy report of chosen Individuals, multiples and departments, Possibility to choose minimum, maximum and average Values

Special Features of Demand Log, Events Data's of Individual Feeders and Loads

Power Quality Alert Reports (Harmonics Levels, Unbalance)

5 CONFIGURATION

Remote Configuration of Overall Serial Devices
3rd party devices can be selectable on site

SLD Diagram of Network Configuration and View USER Login Information Report
Multiple Login Option for Admin & Users
Complete Browser based Software , Can be accessible every where in local Network
No interruptions of Communications
Visual Alarm of Communication Status

Total Network of SLD Organization Chart,
Device Status on and Off Signal Indication for Entire devices
No Specialist required to access the Software

6 OPERATION

The Energy Management Software shall be installed on the server PC. This PC will be used as Energy monitoring data server.

The Software shall be programmed to communicate with the energy meters to collect data on-line and continuously. The communication shall work round the clock without any interruption.

The versatile and user-friendly software installed on the PC shall facilitate users to view real-time data, historical data as well as generate reports and monitor alarm conditions.

The software shall have functions that can help automate and simplify energy monitoring and reporting, based on actual operating data.

The software Can be licensed to communicate up to 250 meter nodes as agreed.

SALIENT FEATURE OF NICXs SOFTWARE

- >Dedicated to monitoring of power network parameters
- >Works on all web browsers
- >Simple and user-friendly configuration (specialist knowledge is not required)
- >Clear user-friendly interface
- >Dedicated for NICXs Panel Meters and Other Competitors meters also can adopted
- >Dedicated for other producers devices with Serial Modbus
- >Visualization of parameters through: Gauge View, Digital indications, trends and tables With Multiple Dashboards
- >Data archiving, Pinpoint your Energy Consumption
- >Presentation of archived data through: tables and trends
- >Reports Export of archived data to Xls and PDF Files
- >Signaling of alarm events
- >Configuration SLD view for easy understanding EMS network
- >Remote access to EMS software through a web browser

Technical and Functional

- >Transmission protocol: Modbus RTU RS485 Wiring Method
- >Transmission speed: 10/100 Mbps , Baud rates Can be Selectable for Individuals Sites.
- >Time interval of parameters checking: 1...60s
(depending on number of devices connected and number of read parameters)
- >Time interval of parameter's archiving: 1s...1h
- > Number of supported devices: up to 250 devices, can be selected number of Node License
- >Measured parameter's templates for NICXs meters NICXs100, 200, 300 & 400 Series.

Reports Feature of EMS System

REAL TIME	REPORTS	CONFIGURATION	OPTIONAL FEATURES
Multiple Parameters Gauge View	Archived Data to Export to Table	Device Adding Method by SLD View	Third Party Device Integration
Single Parameter Gauge View	Archived Data to Export to Trends	Configuration View by SLD	Auto Email
Multiple Device Curve	Archived Site Energy to Export to PIE Chart	Options Provided to Upload Image for Sites	Alert Sms
Multiple Parameters Dashboards	Multiple Device Energy Dashboards	Remote Configuration of All Read/Write Values	Auto Generation Reports
Demand & Max Demand Dashboards	Single Device Energy Dashboards	Remote Demand Configuration For Demand Controller	More than 2 User Login Access
Power Quality Matrix Dashboards	Site/Shift wise Single Device Energy Dashboards	User Add/edit the permission for User	Energy Billing System
Real Time SLD Organization Chart	Site/Shift wise Multiple Device Energy Dashboards	Multi admin provision	Textile UKG Reports
Communication Status Signal Info	Monthly Device wise Energy Dashboards		Industries Customized Production Cost Reports
Visual Alarm acknowledgement	Monthly Department wise Energy Dashboards		Water, Fuel, Pressure, Temperature, Gas Output Integration
User Login Information on Main Screen	Power Quality MIN/MAX Device wise Reports		Web based Systems
User Login Informations			
Logo/Customer Image Can be Visualize			
Site Location Image Can be Visualize on SLD View			
		*All Archived data Can be Customized Date and Time	

DEFAULT

OPTIONAL



Energy Management Application

Solar Energy Sources

Nuclear

Hydro

wind

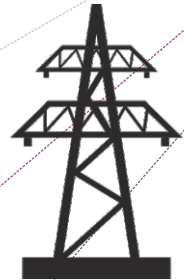
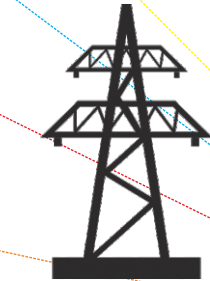
Geothermal

Gas

Coal

Bio Mass

Petroleum



ELECTRICITY GENERATION

Generation Station



Transmission



Residential

Industrial

Commercial



Distribution



Distribution



Distribution

Field Devices



NICXs
Energy Management Software

Introductory Offer For an NICXs Energy Management Systems

Special Offer for more than 50 nodes Customers

“Siliconicxs” is offering free Charges of 25 nodes!

This offer Valid till 2015!

Thank You

SILICONICXS

Connect | Measure | Explore | Protect

