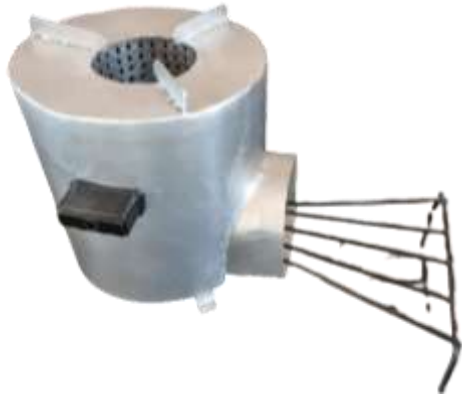


## **ESB-R SMOKELESS BIOMASS STOVE**



### **BIO-NATURE**

**Nature-draft Smokeless Biomass Stove**



**A STEP TOWARDS GREEN ENERGY**

## **ENERSOL BIOPOWER PVT. LTD.**

Enersol Biopower Pvt. Ltd., established in 2013, has earned an enviable reputation in the market for manufacturing, supplying, and distributing a range of biomass-to-energy products.

Biomass stoves are a great alternative to LPG stoves as they are more environmentally friendly and cost-effective.

Our Bio-Nature Biomass Stove is specially designed to replace traditional biomass stoves in villages.



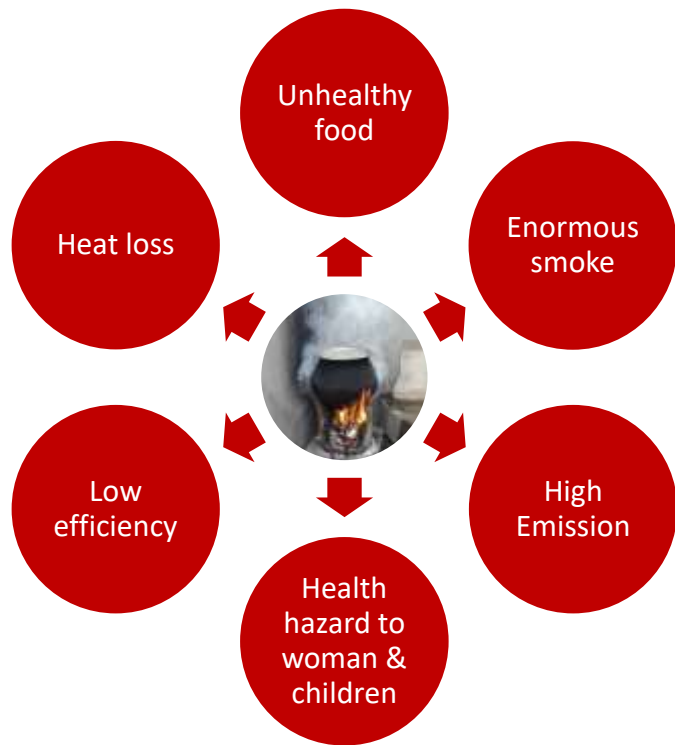
## SAY **NO** TO TRADITIONAL BIOMASS STOVE



## SAY **YES** TO ESB-R BIO-NATURE

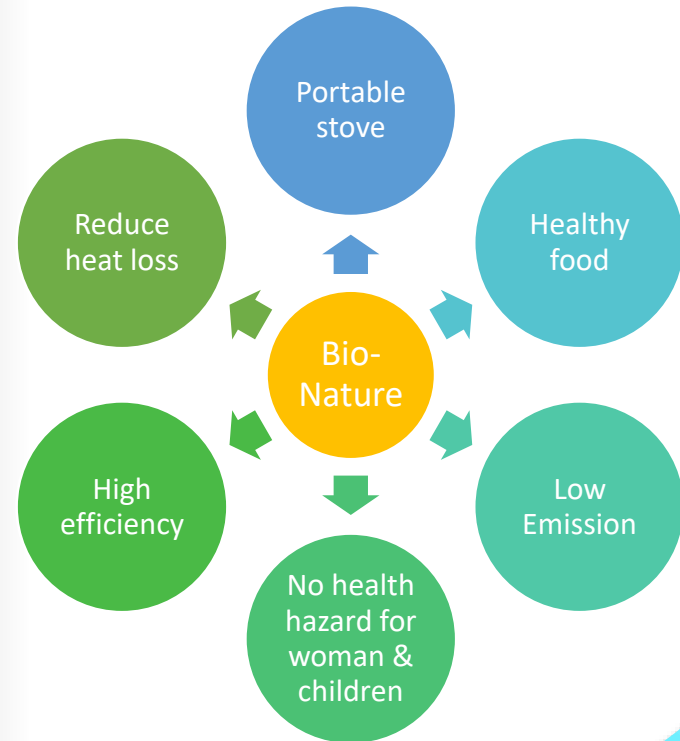


## TRADITIONAL BIOMASS STOVE



Vs.

## ESB-R BIO-NATURE SMOKELESS BIOMASS STOVE



## **KEY FEATURES OF ESB-R BIO-NATURE**

---

ESB-R Bio-Nature biomass stove has some unique features that make it more advantageous than other available biomass stoves in the market. They are as follows:

- ✓ The ESB-R Bio-mini stove doesn't release smoke, which helps women to live in a less polluted and healthier kitchen environment. This reduces the risk of health issues in women and children, ultimately enabling them to adopt a healthy lifestyle.
- ✓ It is more efficient than traditional chulha.
- ✓ It is a reliable, rugged, and compact system.
- ✓ It has low maintenance requirements and is easy to operate.
- ✓ Accessible to both urban and rural populations.
- ✓ It reduces the use of fossil fuels.
- ✓ As it comes with enclosed combustion chambers or temperature control mechanisms, it reduces the risk of accidental fires or burns

**Reduce  
heat loss**

**Portable  
System**

**No health  
hazard to  
woman &  
children**

**Healthy  
Food**

**Low  
Emission**

**High  
Efficiency**



## TECHNICAL SPECIFICATIONS

Sr. No.	Particulars	Details
1.	Make	Enersol Biopower®
2.	Fuel Mode	100% Biomass
3.	Stove Type	Nature-draft
4.	Feeding Mode	Manual
5.	Feeding System	Side Feeding
6.	Made of	Mild Steel
7.	Accepted Moisture in Fuel	Less than 20%
8.	Ash Removal Mode	Manual

Model No.  
**ESB-R/BN01**

Model Name  
**Bio-Nature**

Stove Size  
**H10"**  
**W11"**  
**L13"**

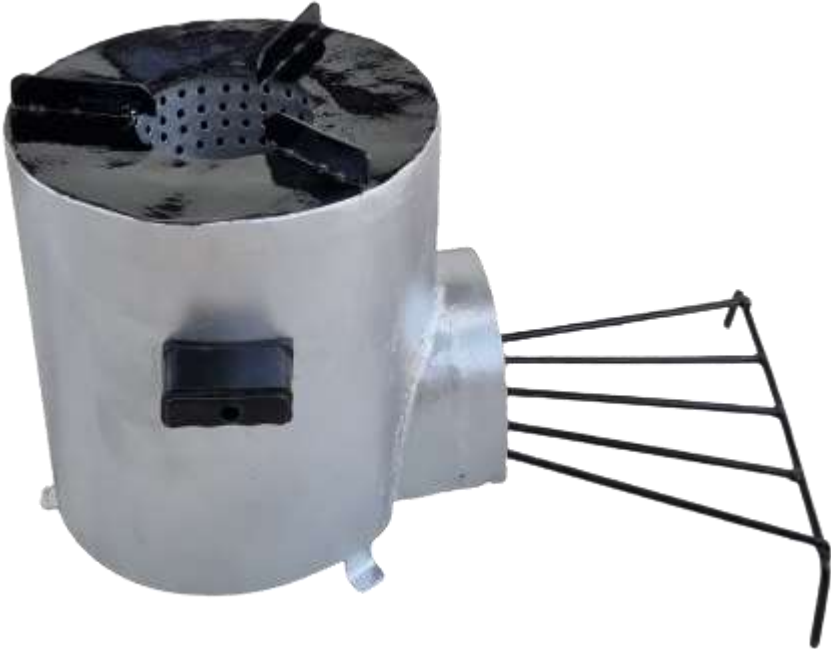
Fore Zone  
**4"**

Biomass  
Consumption  
**1-2kg / hr.**

Stove Weight  
**7kg Approx.**



# ESB-R BIO-NATURE PICTURES





## CONNECT US ON YOUTUBE

- ✓ [https://www.youtube.com/shorts/YdZkz\\_QbkLU](https://www.youtube.com/shorts/YdZkz_QbkLU)
- ✓ <https://www.youtube.com/watch?v=LKDlbvXdHyM>
- ✓ <https://www.youtube.com/watch?v=PfQVa7wNUBU&t=33s>
- ✓ <https://www.youtube.com/watch?v=RjHPXigdAa8>
- ✓ <https://www.youtube.com/watch?v=7MVHph7NfkY>
- ✓ <https://www.youtube.com/watch?v=LKDlbvXdHyM>
- ✓ <https://www.youtube.com/watch?v=5zYZ5I5zBfc>
- ✓ <https://www.youtube.com/watch?v=0AhISC5Dw00>
- ✓ [https://www.youtube.com/watch?v=mkyeqDBI\\_2Y](https://www.youtube.com/watch?v=mkyeqDBI_2Y)
- ✓ <https://www.youtube.com/watch?v=W9HXk2M-Mgw>
- ✓ <https://www.youtube.com/watch?v=l8NuflvOH4k>
- ✓ <https://www.youtube.com/watch?v=Rp17MmDRilQ>



- ✓ <https://www.youtube.com/watch?v=7MVHph7NfkY>
- ✓ <https://www.youtube.com/watch?v=hoFHYyMAstY>
- ✓ <https://www.youtube.com/watch?v=-XmU5L6lytM>
- ✓ [https://www.youtube.com/watch?v=-dsKwNdd\\_IY](https://www.youtube.com/watch?v=-dsKwNdd_IY)
- ✓ <https://www.youtube.com/watch?v=vY73UXW6aIM>
- ✓ <https://www.youtube.com/watch?v=FYPajsGRrrw>
- ✓ <https://www.youtube.com/watch?v=6cYUyY25OXE>
- ✓ <https://www.youtube.com/watch?v=qPXbaBs1cgU>
- ✓ <https://www.youtube.com/watch?v=qT4slGGJEfl>
- ✓ <https://www.youtube.com/shorts/JL5d8YCauc>



## OUR PRESTIGIOUS PARTNERS

- ❑ Celebration Enterprise, Bankura, West Bengal
- ❑ Tarun Enterprise, Medinipur- West Bengal
- ❑ Shree Varindavan Thali Restaurant, Korba, Chhatisgarh
- ❑ Ratan Mithan Bhandar, Siwana, Barmer
- ❑ Sharma Mithan Bhandar, Beawar, Rajasthan
- ❑ Vellore Institute of Technology (VIT), Vellore, Tamil Nadu
- ❑ Asian Techno Engineers, Nellore, Andhra Pradesh
- ❑ Roshan Hotel, Kurnool, Andhra Pradesh
- ❑ Sanjay Sawant, Karnal
- ❑ Mr. Vijay Shivaji Lambe, Ahemdagar, Maharashtra
- ❑ Amit Kumar Jhariya, Jabalpur, MP
- ❑ Mr. Seenappa M, Bangalore, KA
- ❑ Mr. Mashood, Pallakade, Kerala
- ❑ Durga Sweet Shop, Deharadun, UK
- ❑ Saini Mithan Bhandar, Alwar
- ❑ Dr. Arundhati B Panwar, Pune
- ❑ Tripura Renewable EnergyDevelopment Agency
- ❑ Technocracy India, Gaziabad,U.P.
- ❑ Flame India, Ahmedabad
- ❑ Mr. Mandeep Singh, Delhi
- ❑ Mr.Mahadeb Dey, West Bengal



IIT, ROORKEE



IIT Ropar





## OUR PRODUCTS SOLD IN INDIA

- ✓ Jammu & Kashmir
- ✓ Himachal Pradesh
- ✓ Chandigarh
- ✓ Punjab
- ✓ Uttarakhand
- ✓ Haryana
- ✓ Delhi
- ✓ Rajasthan
- ✓ Uttar Pradesh
- ✓ Gujarat
- ✓ Madhya Pradesh
- ✓ Chhattisgarh
- ✓ Maharashtra
- ✓ Telangana
- ✓ Pondicherry
- ✓ Tamil Nadu
- ✓ Kerala
- ✓ Jharkhand
- ✓ West Bengal
- ✓ Sikkim
- ✓ Meghalaya
- ✓ Assam
- ✓ Bihar
- ✓ Arunachal Pradesh
- ✓ Orissa
- ✓ Goa
- ✓ Karnataka
- ✓ Andhra Pradesh



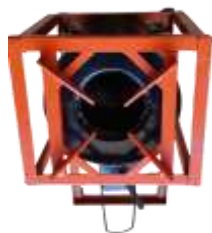
## ESB-R BIOMASS STOVES



**ESB-R  
Bio-Mini**



**ESB-R  
Harit-Agni12**



**ESB-R  
Green-Agnika10**



**ESB-R  
Harit-Agni12B**



**ESB-R  
Green-Magic15**



**ESB-R  
Bio-Virat18**



**ESB-R  
Bio-Akash21**



**ESB-R  
Bio-Prithvi24**



**ESB-R  
Harit-Jumbo27**



**ESB-R  
Jumbo-Shakti36**



## OUR PRODUCTS



**Automaking Roti Making Machine**



**Biomass based Automatic Mawa-Machine**



**Portable Biomass Gasifier**



**Roti Maker Biomass Stove**



**Biogas Generator**



**Used Oil Recycling Plant**



**Multi-Purpose Food Processing Machine**



**Biomass Torrefaction Plant (Charcoal Plant)**



**Wood Cutter / Biomass Shredder**



**Biomass Briquette Pellet Machine**





## AWARDS

- ✓ Fifth National Grassroots Innovation Award, 2009.
- ✓ Innovation Scholars In-residence Program At President House.
- ✓ Indian Merchant Chamber (IMC) – Inclusive Innovation Award, 2012.
- ✓ Certificate of Appreciation As “Farmer Scientist” By Rajasthan University of Veterinary & Animal Sciences, Bikaner, Rajasthan.
- ✓ Certificate of “Farmer Scientist” By Pacific University, Udaipur, Rajasthan.
- ✓ Certificate From Department of Science & Technology At National Science Day, Jaipur, Rajasthan.
- ✓ Business Expo Kota 2023, Kota, Rajasthan.





## EXHIBITIONS

- ✓ Exhibition of Innovations, President House, 2010
- ✓ Inauguration of ESB-R Biomass gasifier by former chief minister of Meghalaya, 2013
- ✓ Third international conference on creativity & innovations at grassroots at Indian institute of management (IIM), Ahmedabad, 2015
- ✓ Exhibition of innovations, President House, 2015
- ✓ India International Science Festival (IISF), New Delhi, 2016.
- ✓ India International Trade Fair (IITF), New Delhi, 2016.
- ✓ Mega Science & Technology and Industry Expo, New Delhi, 2017
- ✓ Bollywood movie Padman promotion, 2018.





## CONNECT US



<https://www.youtube.com/@enersolbiopower-biomassgas3987>



<https://www.indiamart.com/enersol-biopower-jaipur/profile.html>



<https://twitter.com/EnersolBiopower>



<https://www.linkedin.com/company/enersol-biopower-pvt-ltd>



<https://www.instagram.com/enersolbiopower/>

## CONTACT US

### Address:

### Enersol Biopower Pvt. Ltd.

Plot No.-57A,Vrindavan Vihar,  
Akeda Dunder, Laxminarayanpura,  
Vishwakarma Industrial Area (VKI),  
Road No.-19, Jaipur- 302013 (Rajasthan)

### Mobile Nos.:

+91-9414535665  
+91-7073495200  
+91-9610103127

### Email IDs:

[info@enersolbiopower.com](mailto:info@enersolbiopower.com)  
[gayatri@enersolbiopower.com](mailto:gayatri@enersolbiopower.com)  
[raj@enersolbiopower.com](mailto:raj@enersolbiopower.com)

### Websites:

[www.enersolbiopower.com](http://www.enersolbiopower.com)  
[www.enersolbiopower.co.in](http://www.enersolbiopower.co.in)

