

Innovative Fiber Laser Welding Technology



**WM | FIBER LASER WELDING MACHINE**



**WHALE MACHINERIES**

*A Unit of Whale Enterprise*

---

*A Versatile and extensive range*

# WM | FIBER LASER WELDING MACHINE

DEVICE / MODEL	1000W	1500W	2000W
Laser Wavelength	1080 (+10)nm		
Output Fiber Length	10M		
Max Laser Power	1000W 1500W	1500W	2000W
Rated Power	6KW	7KW	8KW
Supply Voltage (V)	220V / 50HZ	220V / 50HZ	380V / 50HZ
Spot Adjustment Range	0.1-5mm	0.1-5mm	0.1-5mm
Laser Frequency	1-10000HZ	1-10000HZ	1-10000HZ
Cooling System	Cw1000	Cw1500	Cw2000
Observing System	CCD or Red Light		
<b>WORKBENCH PARAMETERS</b>			
Stroke of XYZ	500X300X300mm		
Position Accuracy	0.05mm		
Repeat Accuracy	0.05mm		
Max Movement Speed	200mm/S		
Size Of Workbench	1300mm X 1000mm		
Accessories	Servo, Motor, Axis of Rotation, Extended Stoke		

## FEATURES

- Fast speed, small deformation, large depth, beautiful welding seam and less consumables.
- The dedicated welding control system has high stability and is easy to understand and learn. It can realize continuous welding points, straight lines, circles, arcs, etc., and can be programmed arbitrarily;
- The electric translation stage is adopted, with high repeat positioning accuracy, fast welding speed and Fast processing speed;

## APPLICATION SCOPE

- Used in the welding of stainless steel, titanium steel, aluminium alloy, copper, galvanized sheet and other materials used in electronic appliances, confidential parts, automobiles household appliances, tool processing and other industries APPLICATION SCOPE

## WM 4 Axis Fiber Laser Welding Machine



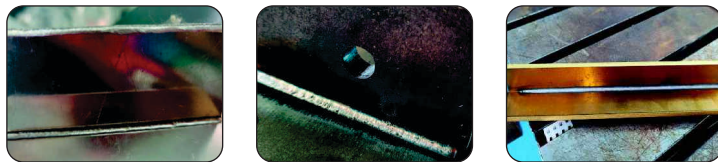
# WM | FIBER LASER WELDING MACHINE

## FEATURES

- The hand-held welding gun replaces the previous fixed optical path, which is more flexible and convenient, realizes long-distance laser welding, and overcomes the limitation of the travel space of the workbench.
- The red light is used for positioning, which is used for the calibration of the welding head position, the welding position is more accurate.
- The laser welding depth is large and the welding is firm.
- It is not easy to deform, easy to polish and polish, which solves the problems of welding penetration, welding flash and welding quality caused by argon arc welding.
- It is used for various complex welds and spot welding of various devices.

## APPLICATION SCOPE

- It can be widely used in complex and irregular welding processes in kitchen cabinets and bathrooms, stairs, shelves, ovens, stainless steel door and window guardrails, distribution boxes, stainless steel furniture and other industries.



WM Handheld Laser Welding Machine



DEVICE / MODEL	1000W	1500W	2000W
Laser Wavelength	1080 (+10)nm		
Optic Fiber Length	10M		
Max Laser Power	1000W	1500W	2000W
Rated Power	6KW	7KW	8KW
Supply Voltage (V)	220V / 50HZ	220V / 50HZ	380V / 50HZ
Spot Adjustment Range	0.1-5mm	0.1-5mm	0.1-5mm
Laser Frequency	1-10000HZ	1-10000HZ	1-10000HZ
Cooling System	Cw1000	Cw1500	Cw2000
Observing System	Red Light		



## THE COMPANY

Under the visionary leadership of our Managing Director, Mr. Mark Warmington, Whale Tankers aims to establish the "WHALE" brand on a global scale. Harnessing innovative technology, dedicated research and expertise, our vision has evolved into a mission, embarked on a remarkable journey with the creation of a new division "WHALE MACHINERIES"- Commitment to Excellence, aimed at serving global markets.

## OUR STORY

Our journey began with the vision of creating a comprehensive range of tankers that meet the specific requirements of Indian applications. With over five decades of experience in Europe, we brought our expertise and philosophy to India, focusing on delivering long-term value to our customers.

## TRAINING

Central to Whale's success is not only the training of its staff but also the provision of structured training for its product. This meets the changing needs of today's laser solutions. The company is also respected for its onsite commissioning of all new products.

## QUALITY

Whale Machineries cares about quality across all aspects of its business. Indeed it is a word that characterises the company. Whale complies to ISO 9001 : 2015 accredited by TUV, Europe and all Whale products fully comply with all relevant legislation and regulations. It also has the benefit from being supported by its UK parent company Whale Tankers the largest manufacturer of vacuum tankers and jetting equipment in Europe.

*Reliability, Service, Value ... for Life*

**WHALE MACHINERIES**  
A Unit of Whale Enterprise

1/1D Vilankurichi Road, Near Senthottam, Kalapatti, Coimbatore - 641 048, Tamilnadu, India  
**Telephone:** +91 89258 70254 **Email:** info@whalemachineries.com **Website:** www.whalemachineries.com

