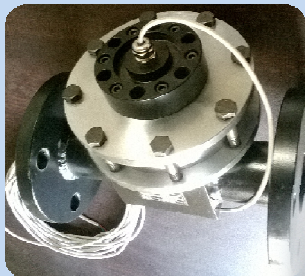


Positive Displacement Flow Meter



Rotary piston type Positive Displacement Flow Meter is an ideal choice for easy and very accurate flow measurement



Features

- ▼ Single moving part, long life trouble free performance
- ▼ High accurate flow measurements
- ▼ Flow range from 0.5 LPM to 1500 LPM (90000 LPH)
- ▼ High Temperature & Pressure sustainability, Negligible pressure drop, works on gravity flow
- ▼ Handles variety of viscosity from 0.5 to 1000 cSt such as Diesel, Petrol, FO, HDO, Jet Fuel Etc.
- ▼ Pulse Transmitter suitable for local / remote LED Totaliser , PLC, Retransmission.
- ▼ Online flow monitoring on computer through ethernet / RS485/232 communication.
- ▼ Flame proof enclosure for hazardous explosive atmosphere
- ▼ High quality raw material & advanced design adhere to International Standards

Applications

Flow Measurement System, Fuel Dispensing System, Fuel Consumption Monitoring System, Tanker/Storage Tank Loading/Unloading System, Batch Filling Systems in various industries like Automobile, Chemical, Petroleum, Mining, Offshore/Onshore etc.

Technical Specification

Accuracy : +/- 0.1- 0.5 % , Repeatability : +/-0.1%
 Max. Operating Pressure : 10bar (Std) 50Bar (Opt)
 Max. Operating Temperature : 80°C (Std) , 200°C (Opt)
 Liquid Viscosity : 0.5 -1000 cSt
 Filtration : 150 microns filtration for trouble free Performance
 Pressure Drop : 0.02-0.1 Kg/cm²
 End Connections : BSP / NPT Female Threaded or Flanged ASME B16.5
 Display : LCD with backlight , 2 line 12 digital
 Power Supply : 110-230 V AC, 12-24 V DC

Product Range

Size	Model	Flow Range	Size	Model	Flow Range
1/4"	PDM06	05 LPM	2"	PDM50	300 LPM
1/2"	PDM15	20 LPM	2.5"	PDM65	500 LPM
3/4"	PDM20	40 LPM	3"	PDM80	1000 LPM
1"	PDM25	70 LPM	4"	PDM100	1500 LPM
1.25"	PDM32	100 LPM	4"	PDMS100	2500 LPM
1-1/2"	PDM40	150 LPM			

Emcube Engineers

S. No. 49/2, Wadheshwar Nagar,
 Wadhgaon Sheri, Pune - 411 014, Maharashtra, India
www.emcubeengineers.com
 email : emcubeengineers@gmail.com