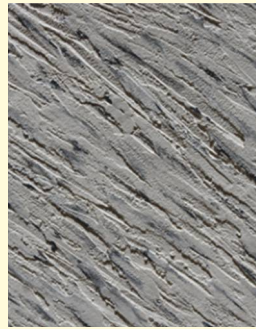


Reliable TuffBeYouty Stone Finish Texture

Acrylic emulsion based natural stone finish reinforced by marble powder and silica sand. It gives variety of stone finishes and brick structures with excellent toughness.



Stone Finish



Stone Finish



Brick



Key Features



Anti-Algae,
Anti-Fungal
protection



Superior
adhesion on
normal & moist
surfaces



Plaster
Protection



Improved
durability
& life



Acid & Alkali
Resistance



Quick
Drying



Hides surface
undulation &
fine Cracks



Technical Data

Property	Data
Colour / Finish	Base Colors White / Texture
Recommended DFT	2-3 mm
Solids	86.00 ± 2%
PH	8 to 9
Specific Gravity kh/ltr	2.0±0.05
Theoretical Spreading Rate	2 -2.5 sq ft per kg per coat
Shelf Life	12 months when stored in cool & dry place in original sealed container
Top Coat	Compatible to all the existing acrylic top coating systems (viz. Distemper, Plastic Paint, etc)
Drying Time @ 30oC	Temperature, humidity, air movement, film thickness and number of coats all affect the drying time.
Touch Dry (hours)	1
Dry to recoat (hours)	16-18
Recommended Method	Reliable Primer : 1 Coat Stone Finish : 2 Coats Acrylic Emulsion : 2 Coat



Pack Sizes and Shade Range

Paintbrush icon Pack Size Availability :- 2 kg, 5 Kg, 10 kg, 20 Kg

Paintbrush icon Shade :- White



Substrate Suitability

Home Coat's Tuff BeYouty Stone Finish Texture is compatible to the following substrates



Asbestos sheets



Concrete



Plaster



Surface preparation



Ensure that the surface to be painted is free from any loose paint, dust and grease.



Any previous growth of fungus, algae or moss needs to be removed thoroughly by vigorous wire brushing and cleaning with water.



On fungus affected areas apply a coat of 'Bio Wash' solution. Allow it to dry for 4-6 hours and then wash with water



Direction for use



For freshly plastered surface, apply 1 coat of Reliable Acrylic Water Primer by diluting 1 ltr of primer with 500 ml of water.



Allow the primer to dry for 3-4 hours before application of texture finish.



Apply a smooth and uniform coat of Stone Texture Finish as base coat by trowel. Add 3-5% water depending on application requirement.



Allow the base coat to dry for 16-18 hours.



Prior to application of 2 coat, stick the masking tape on the dried base coat so that desired tile pattern or stone pattern can be obtained.



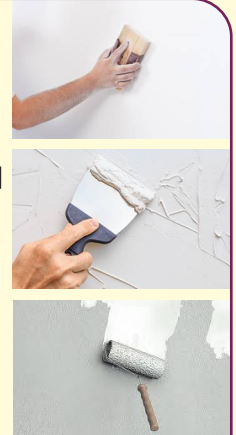
Apply Stone Face Texture Finish on above surface by metal trowel to get stone effect. After desired texture remove masking tape immediately in wet condition.



Allow it to dry for 16-18 hours.



Apply 2 coats of exterior emulsion as a top coat.



Precautions



Prior to use, please use, read and follow product specifications, MSDS and label information.



Do not over thin.



Avoid contact with eye and skin.



Use safety equipment such as rubber gloves and safety goggles.



HomeCoat OPC Pvt. Ltd.

📍 **Factory:** A10, Balaji Industrial Estate, Tondre, Talaja MIDC, Panvel 410206

📍 **Reg. Office :** 101, PrabhuKripa, Plt no 10&12, Rd no 13, Sect 19, New Panvel, Raigad 410206

☎ **8260013001** 📧 connect@homecoat.in 🌐 www.homecoat.in