

Innovative Fiber Laser Marking Technology



STANDARD



PORTABLE

WM | FLM SERIES



WHALE MACHINERIES

A Unit of Whale Enterprise

A Versatile and extensive range

FEATURES

- Fast speed, high efficiency, stable output power, high reliability.
- Long life, maintenance-free within 100,000 hours, operated in 24 hours and severe working condition
- Applicable on materials like metal, non-metal, plastics, etc.,
- Permanent Marking Processing / Online- Marking Process
- Minimize damage to the product and enhance the quality
- High speed marking for mass production
- It can mark all sorts of precise patterns according to customer requirements
- With international high-quality fiber laser, it can mark all sorts of precise patterns according to customer requirements
- High electro-optic conversion efficiency, little energy coupling loss, less power consumption with just 0.5 KW / Hour

SPECIFICATION

SPECS / MODEL	FL 10/20/30/50/60/100
Power	20 W to 100 W
Wavelength	1064 ±3 nm
Beam Quality	<1.2 (M2)
Pulse Repetition Rate	20 - 400KHz
Power Stability	<±1%
Focus Spot Diameter	<0.05mm
Working Area	70 X 70/100 X100/150 X 150/ 200 X 200/300 X 300 mm
Max marking Depth	1.2mm
Max marking speed	1500 standard characters / second
Minimum Line Width	0.05mm
Minimum Character	0.05mm
Repetition Accuracy	±0.003 mm
Cooling Mode	Air cooling
Ambient Temperature	15°C - 35°C
Power Requirement	220V/single phase/50Hz/<600W
Life of Laser Module	>100000Hrs
Guide Laser/Red Aiming Beam	Yes 660nm

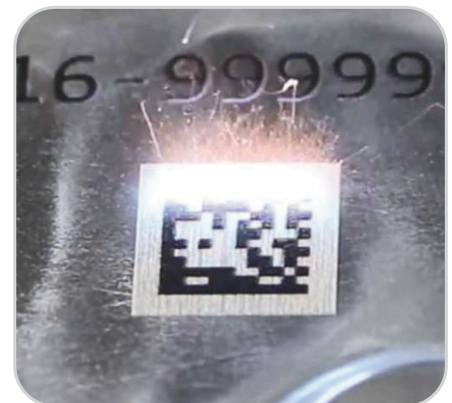


Standard Fiber Laser Marking Machine



Portable Fiber Laser Marking Machine

SAMPLES





THE COMPANY

Under the visionary leadership of our Managing Director, Mr. Mark Warmington, Whale Tankers aims to establish the "WHALE" brand on a global scale. Harnessing innovative technology, dedicated research and expertise, our vision has evolved into a mission, embarked on a remarkable journey with the creation of a new division "WHALE MACHINERIES"- Commitment to Excellence, aimed at serving global markets.

OUR STORY

Our journey began with the vision of creating a comprehensive range of tankers that meet the specific requirements of Indian applications. With over five decades of experience in Europe, we brought our expertise and philosophy to India, focusing on delivering long-term value to our customers.

TRAINING

Central to Whale's success is not only the training of its staff but also the provision of structured training for its product. This meets the changing needs of today's laser solutions. The company is also respected for its onsite commissioning of all new products.

QUALITY

Whale Machineries cares about quality across all aspects of its business. Indeed it is a word that characterises the company. Whale complies to ISO 9001 : 2015 accredited by TUV, Europe and all Whale products fully comply with all relevant legislation and regulations. It also has the benefit from being supported by its UK parent company Whale Tankers the largest manufacturer of vacuum tankers and jetting equipment in Europe.

Reliability, Service, Value ... for Life

WHALE MACHINERIES
A Unit of Whale Enterprise

1/1D Vilankurichi Road, Near Senthottam, Kalapatti, Coimbatore - 641 048, Tamilnadu, India
Telephone: +91 89258 70254 **Email:** info@whalemachineries.com **Website:** www.whalemachineries.com

