

Palm Bladder Scanner

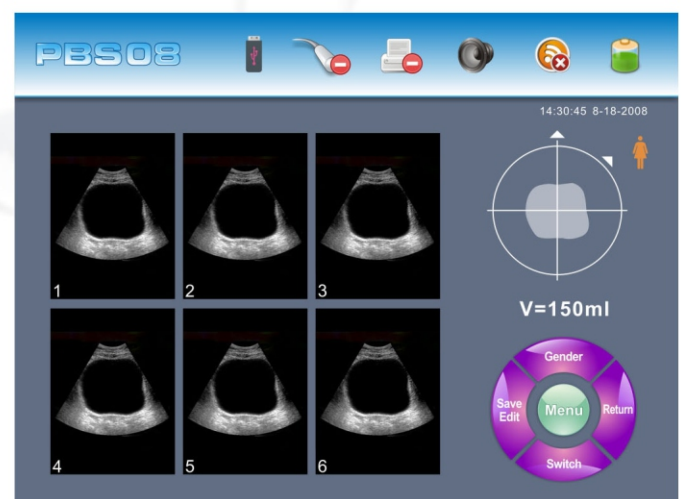
- experience in new generation of bladder scanning -



The Palm Bladder Scanner is the answer to the needs of many health professionals. It is a compact fully operational bladder scanner. The technology is of a very high standard. By listening very carefully to the demands of our customers, we have created an instrument which answers those needs.

The shape and performance are state-of-the-art and the instrument is very easy to use. It has a real-time pre-scan function for bladder location to enhance the accuracy of the measurement by having the bladder images visible and centred in the longitudinal and horizontal axis before scanning the bladder.

The clear and simple screens guides the user through the scanning procedure. Arrows on the screen show the user where to position the probe in order to get an accurate measurement. The scanner is small in size, easy to use, has a long battery life, an arrow direction function and a smart calibration function. This last feature is new and means that with every setting up of the device, a previous calibration will show so that the measured results will be validated.



The scanner can be operated in many ways:

- in its leather case or flight case.
- in its docking cradle on a trolley or desk
- in its wall mounted cradle

To print results, the scanner is placed in its cradle and if required can stay there during use. More conveniently the results can be sent via its USB port to any suitable device. The Palm Bladder Scanner is a hand held device and the perfect answer for easy transportation between different hospital locations or for use in primary care environment such as a continence service delivering home care.



Technical Specification

Scan method: 3D Mechanical sector scanning

Freq.: 2.6 MHz

Scan Depth: ≥ 140 mm

Swing angle: 120°

Rotating angle: 180°

Screen size: 8,4" TFT color LCD

Feature/Functions: Real-time pre-scan function for bladder location / Sound alarm function / Bladder image and volume display / Scanned image storage / Software upgrade through USB / Printer build in cradle / Battery consumption management

Max.volume Measuring: 999ml

Difference: $\pm 25\%$ (Volume ≤ 150 ml)

$\pm 15\%$ (Volume > 150 ml)

Working environment: Temp. $+5 \sim +40$ Humidity $\leq 80\%$

Atmosphere pressure: 700hpa-1060hpa

Power supply: Rechargeable lithium aggregation battery

Battery capacity: 4200 mAh

Charging method: Caricabatterie AC

Instrument dimension: 31cm x 26cm x 5cm

Weight: 2,1kg

** Technical data can be changed without any notice*

Distributed by:

**Menfis
Division**

Divisional Office:

via della Beverara, 46/D - 40131 -

BOLOGNA - ITALY

Tel: + 39 051 635 10 74 - FAX: +39 051

635 10 81

E-mail: info@menfis.it - WEB SITE:



MEDICA S.p.A.

via degli artigiani, 7

41036 - MEDOLLA - MODENA - ITALY