

Application

The EB50 are multi spring seals with innovative sealing solutions that offer hydraulically balanced designs. With their compact and robust design, these seals excel at handling challenging fluids such as sludges, slurries, polymerizing fluids, and thick syrups. Their versatile nature allows for seamless adaptation to various operational requirements. One notable advantage of these seals is no sleeve or shaft step is required for hydraulically balancing.

This design has minimum parts coming in contact with the medium and thus gives very good results with highly viscous and thick medium fluids.

This design ensures effective sealing performance even in demanding conditions. On the other hand, this design reduces friction and wear, making it ideal for cleaner fluids and lower viscosity applications. The balanced configuration helps to prolong the seal's lifespan and maintain sealing efficiency over time.

Operating Parameters

Shaft Dia.: 18 to 120mm

Pressure: up to 25 Bars

Temp.: -20 to 120°C

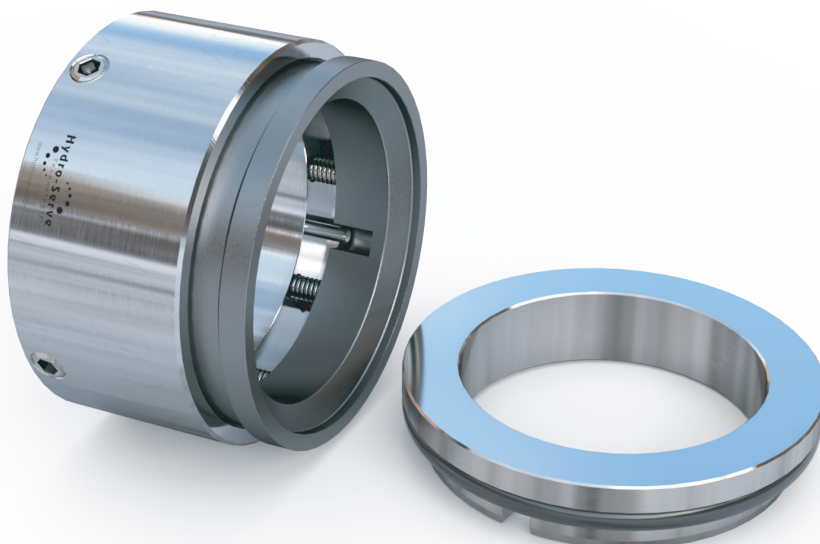
Speed: up to 20 m/s

Materials

Seal Faces: Carbon/Sic/TC

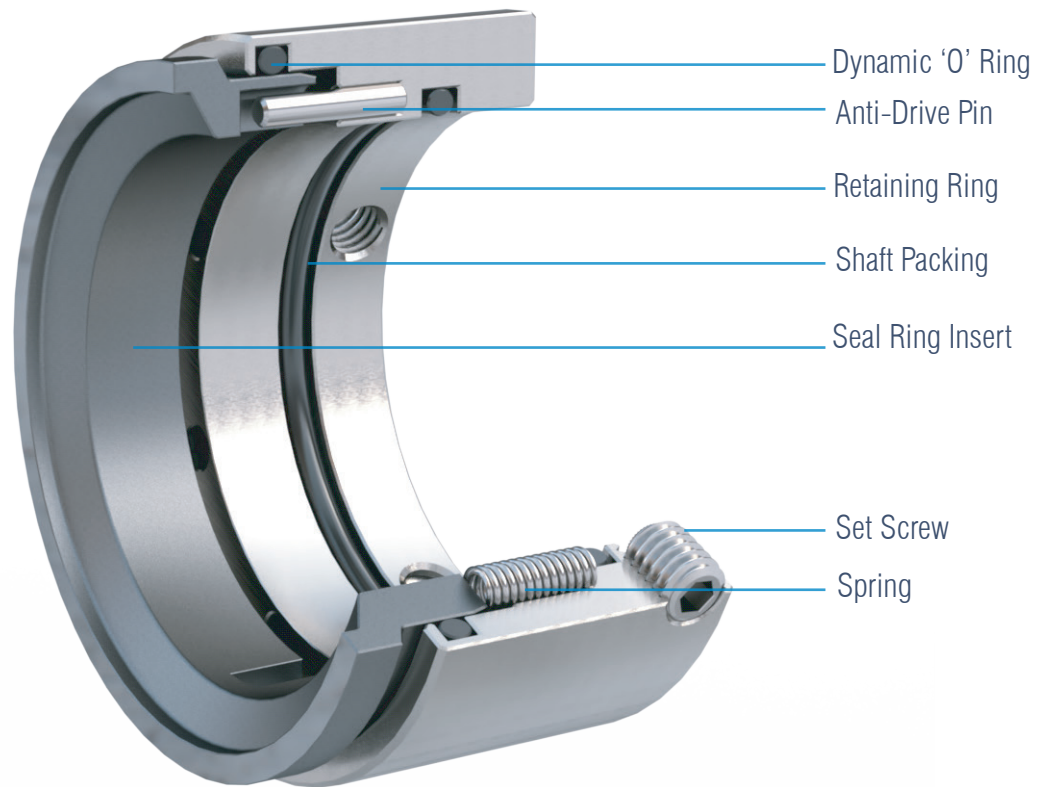
Secondary Seals: FFKM/FKM/PTFE

Metal Components: SS-316/Hast-C/Inconel-718



EB50

Metric



Features



Easy Installation



Rugged & Reliable Design



Requires Minimum Axial & Radial Space for installation



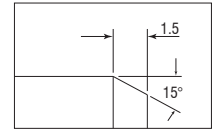
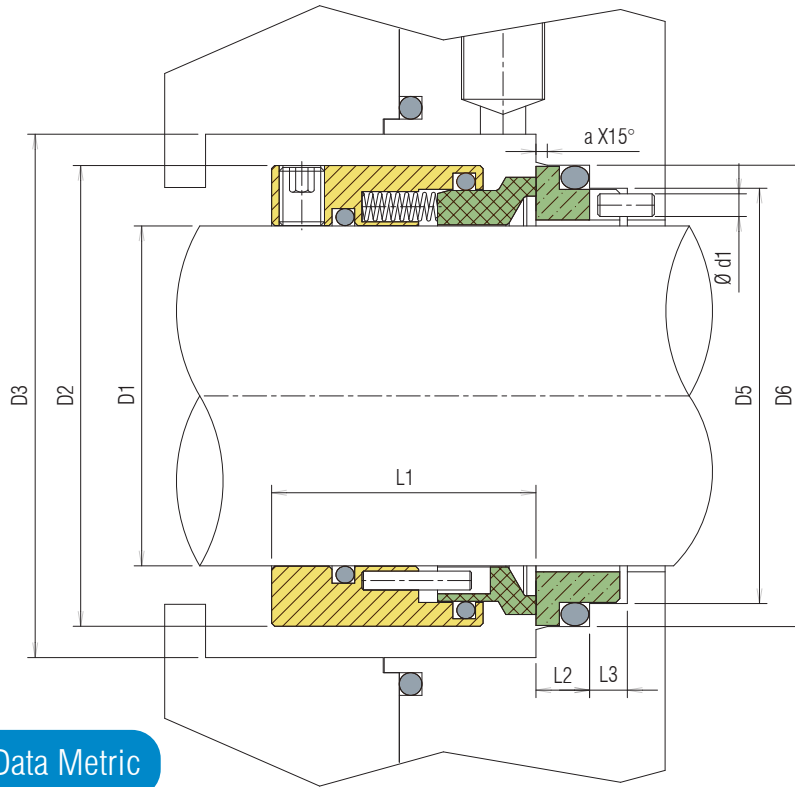
Minimum Parts



Suitable for Viscous Medium



Self Balanced



For ease of installation, the lead-in edge of the shaft or sleeve should be chamfered as shown.

EB50 Dimensional Data Metric

D1	D2	D3	D4	D5	d1	L1	L2	L3	a
16	27	31	23	27	3	30.5	4	8.5	1.5
18	33	34	27	33	3	30.5	5	9	2
20	35	36	29	35	3	30.5	5	9	2.0
22	37	38	31	37	3	30.5	5	9	2
24	39	40	33	39	3	30.5	5	9	2
25	40	41	34	40	3	30.5	5	9	2
28	43	44	37	43	3	35	5	9	2
30	45	46	39	45	3	35	5	9	2
32	48	48	42	48	3	35	5	9	2
33	48	49	42	48	3	35	5	9	2
35	50	51	44	50	3	35	5	9	2
38	56	58	49	56	4	35	6	9	2
40	58	60	51	58	4	35	6	9	2
43	61	63	54	61	4	35	6	9	2
45	63	65	56	63	4	35	6	9	2
48	66	68	59	66	4	35	6	9	2
50	70	72	62	70	4	35	6	9	2.5
53	73	75	65	73	4	35	6	9	2.5
55	75	78	67	75	4	35	6	9	2.5
58	80	85	70	78	4	35	6	9	2.5
60	80	85	72	80	4	35	6	9	2.5
63	84	88	75	83	4	35	6	9	2.5
65	86	90	77	85	4	35	6	9	2.5
70	92	95	83	92	4	48	7	9	2.5
75	102	104	88	97	4	48	7	9	2.5
80	106	109	95	105	4	48	7	9	3
85	111	114	100	110	4	48	7	9	3
90	116	119	105	115	4	48	7	9	3
95	120	125	110	120	4	48	7	9	3
100	125	129	115	125	4	48	7	9	3

Note: Contact Hydro-Serve Design team for special requirements and customization



HYDRO-SERVE TECHNOLOGIES

UNIT 1
6, Zoroastrian Compound, Adarsh Nagar
New Link Road, Jogehwari (West)
Mumbai - 400102
INDIA
Email: support@hydro-serve.com
Phone: +91 9004261601

UNIT 2
Plot No. 19/20,
Khali Char Rasta,
Sidhpur - 384151, North Gujarat.
INDIA
Email: support@hydro-serve.com
Phone: +91 9004261601

NOTE: If the products featured are intended for use in a potentially dangerous or hazardous process, it is essential to consult with a Hydro-Serve representative before selecting and using those products. Hydro-Serve emphasizes the importance of obtaining expert guidance to ensure safety and proper product suitability.