

PTFE Bellow Seal T60



Your Partner for Sealing Solutions . . .

Application

The T60 PTFE Bellow seals offered by Hydro-Serve are specifically designed to cater to the needs of various industries dealing with highly corrosive and acidic pumping mediums. These seals are engineered to handle highly corrosive liquids, including concentrated acids and salts. With their exceptional resistance to corrosion, they provide reliable sealing solutions in demanding environments.

One of the key advantages of the T60 seals is their external mounting configuration, which allows for easy installation. This feature not only simplifies the installation process but also contributes to cost-effectiveness when it comes to sealing corrosive media. The T60 seals provide a reliable and efficient sealing solution without the need for complex and expensive modifications to the existing equipment.

The compact design of the T60 seals makes them suitable for applications with small bore and limited axial space. This design flexibility allows for easy integration into various systems and equipment. Additionally, the torque transmission of these seals can be customized to suit specific requirements, offering the option of either a Pin or Key Drive version. This customization ensures optimal performance and compatibility with different machinery and processes.

Operating Parameters

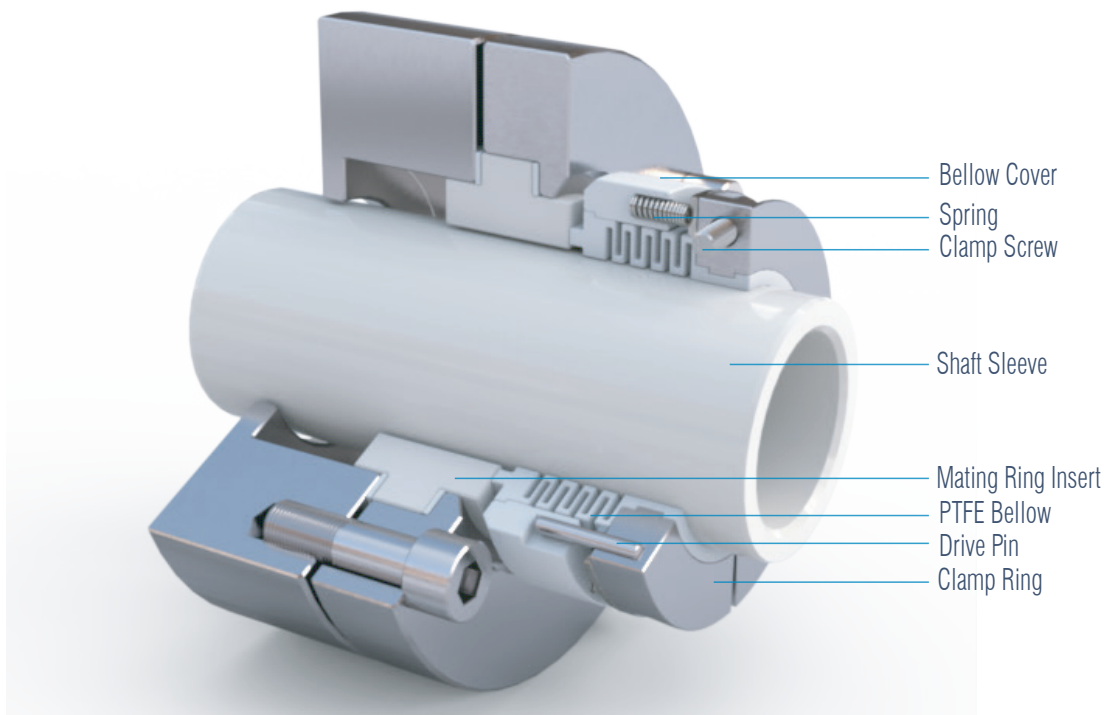
Shaft Dia.: 18 to 105 mm
Pressure: Vacuum to 5 Bar
Temp.: -20 to 80°C
Speed: up to 15m/s

Materials

Seal Faces: Carbon/Sic/TC/AlO₂
Secondary Seals: PTFE/GFT
Metal Components: SS-316/SS-304



T60



Features



Easy Installation



Suitable for Highly Corrosive Media



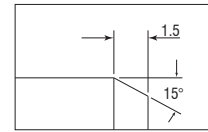
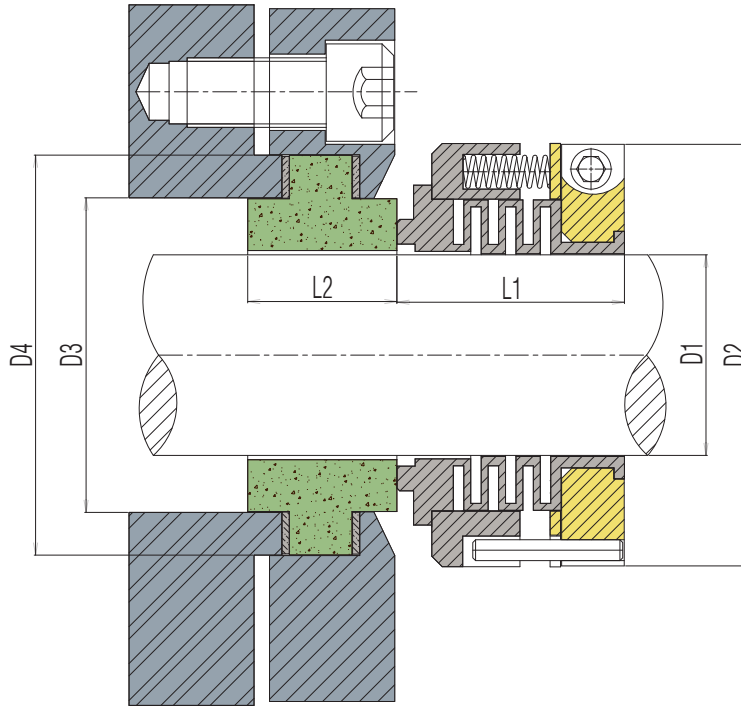
Requires Minimum Axial & Radial Space for installation



Minimum Parts



Externally Mounted



For ease of installation, the lead-in edge of the shaft or sleeve should be chamfered as shown.

T60 Dimensional Data Metric

D1	D2	D3	L1	L2
16	34	33	52	17.4
18	36.50	36.2	52	17.4
20	40	39.9	25	17.4
25	58	42.6	25	17.4
28	60	45.7	26	26.9
32	67	50.5	27	26.9
35	70	53.7	30	26.9
38	73	56.9	30	26.9
42	76.2	63.9	35	26.9
45	80	66.4	35	26.9
48	85.5	69.6	35	26.9
50	90	72.7	35	26.9
55	92	79.1	43	33.3
58	95	82.3	43	33.3
60	98	85.4	43	33.3
63	101.6	88.6	43	33.3
65	105	91.8	43	33.3
70	108	94.9	43	33.3
73	112	98.1	43	33.3
75	115	99.7	43	33.3
80	124	102.9	43	33.3
82	127	--	43	--
85	130	--	43	--
88	134	114	43	34.3
93	137	120.4	43	34.3
95	139	126.7	43	34.3
98	142	--	43	--
100	147	139.9	43	34.3

Note: Contact Hydro-Serve Design team for special requirements and customization



HYDRO-SERVE TECHNOLOGIES

UNIT 1

6, Zoroastrian Compound, Adarsh Nagar
New Link Road, Jogehwari (West)
Mumbai - 400102
INDIA
Email: support@hydro-serve.com
Phone: +91 9004261601

UNIT 2

Plot No. 19/20, Behind Meena Hotel,
Sidhpur - 384151, North Gujarat.
INDIA
Email: support@hydro-serve.com
Phone: +91 9004261601

NOTE: If the products featured are intended for use in a potentially dangerous or hazardous process, it is essential to consult with a Hydro-Serve representative before selecting and using those products. Hydro-Serve emphasizes the importance of obtaining expert guidance to ensure safety and proper product suitability.