



BLDC 2 POLE MOTOR

BLDC 2 POLE MOTOR



Application

Refrigerator
Evaporator, Condenser
Exhaust Fan, Blower &
General Purpose
1-15 Watts

BLDC 2 POLE MOTOR

ELECTRICAL PERFORMANCE

MODEL NO	ELECTRICAL SOURCE		NO LOAD TYPICAL		OPERATING POINT				
	VOLTAGE V	FREQ Hz	SPEED RPM	CURRENT mA	INPUT W	OUTPUT W	SPEED RPM	TORQUE gm-cm	PEAK EFFICIENCY
Controller MCON-001									
MEC162S06A/1AL-NW1	110-120V AC	60Hz	5600	16mA	2.2	1.1	3000	30	48%
MEC162S06A/1AL-NW2	110-120V AC	60Hz	5800	14mA	2.3	1.2	3000	38	50%
MEC162S08A/1AL-NA1	110-120V AC	60Hz	4500	29mA	4.2	2.0	2000	98	48%
Controller MCON-002									
MEC162S06A/2AL-NW3	220-240V AC	50/60Hz	5600	15mA	1.5	0.9	3000	29	60%
MEC162S06A/2AL-NW4	220-240V AC	50/60Hz	4800	14mA	2.9	1.3	3200	41	44%
MEC162S08A/2AL-NA2	220-240V AC	50/60Hz	4600	26mA	5.6	2.7	2400	111	49%
Controller MCON-002									
MEC262S06A/3DL-NW5	12V DC		5600	16mA	2.0	0.9	3000	24	45%
MEC262S06A/3DL-NW6	12V DC		4000	22mA	2.4	1.1	2800	34	46%
MEC262S08A/3DL-NA3	12V DC		4600	46mA	5.6	2.7	2400	104	48%
MEC262S13A/3DL-NE1	12V DC		5200	1.0A	12.0	6.7	2600	260	56%
MEC262S17A/3DL-NS1	12V DC		5500	1.5A	18.0	9.8	2600	400	54%
MEC262S17A/3DL-NS2	12V DC		5400	2.0A	24.0	12.4	2600	470	52%
MEC262S06A/4DL-NW7	24V DC		5600	9mA	2.3	1.2	3000	26	53%
MEC262S06A/4DL-NW8	24V DC		4000	10mA	2.4	1.1	2800	37	46%
MEC262S08A/4DL-NA4	24V DC		4600	0.23A	5.6	2.5	2400	107	45%
MEC262S13A/4DL-NE2	24V DC		4800	0.5A	12.0	6.5	2600	275	54%
MEC262S17A/4DL-NS3	24V DC		4600	0.75A	18.0	9.6	2600	390	53%
MEC262S17A/4DL-NS4	24V DC		5600	1.0A	24.0	12.0	2800	470	50%
MEC262S06A/5DL-NW13	48V DC		5600	42mA	2.4	1.2	3000	29	50%
MEC262S06A/5DL-NW14	48V DC		4000	50mA	2.4	1.1	2800	38	46%
MEC262S08A/5DL-NA7	48V DC		4600	120mA	5.8	2.6	2400	101	46%
MEC262S13A/5DL-NE5	48V DC		5000	0.25A	12.0	6.6	2600	280	55%
MEC262S17A/5DL-NS9	48V DC		4800	0.38A	18.2	9.4	2600	405	52%
MEC262S17A/5DL-NS10	48V DC		5000	0.5A	24.0	12.6	2600	480	53%
MEC262S06A/1AL-NW9	110-120V AC	50/60Hz	5600	16mA	2.4	1.2	3000	30	50%
MEC262S06A/1AL-NW10	110-120V AC	50/60Hz	5800	14mA	2.3	1.2	3000	36	50%
MEC262S08A/1AL-NA5	110-120V AC	50/60Hz	4500	40mA	4.2	2.0	2000	106	48%
MEC262S13A/1AL-NE3	110-120V AC	50/60Hz	4600	95mA	12.6	6.5	2600	240	51%
MEC262S17A/1AL-NS5	110-120V AC	50/60Hz	5400	0.27A	19.0	10.0	2600	395	53%
MEC262S17A/1AL-NS6	110-120V AC	50/60Hz	5500	350mA	29.0	12.4	2600	390	48%
MEC262S06A/2AL-NW11	220-240V AC	50/60Hz	5600	15mA	1.5	0.9	3000	28	60%
MEC262S06A/2AL-NW12	220-240V AC	50/60Hz	4800	13mA	2.9	1.4	2800	48	47%
MEC262S08A/2AL-NA6	220-240V AC	50/60Hz	4600	26mA	5.6	2.7	2400	106	49%
MEC262S13A/2AL-NE4	220-240V AC	50/60Hz	4400	55mA	12.9	6.7	2600	246	52%
MEC262S17A/2AL-NS7	220-240V AC	50/60Hz	5200	130mA	18.4	9.6	2600	385	52%
MEC262S17A/2AL-NS8	220-240V AC	50/60Hz	5000	106mA	25.4	12.7	2600	460	50%
MEC247S06A/3DL-GW1	12V DC	—	6500	0.04mA	2.0	—	2500	38	60%
MEC247S06A/3DL-GW2	12V DC	—	6500	0.04mA	3.0	—	2500	54.5	60%

Class-A Insulation
Impedance protected
Operating Temperature -30°C to +60°C
Humidity 95% @ 55°C
Insulation Resistance > 10 M Ω

*Additional Features available

Soft start
Auto Restart
Auto Power down
Constant speed
Adjustable speed control
Intelligent, speed control



2 POLE BLDC 17



MICRO INSTRUMENTS CO.

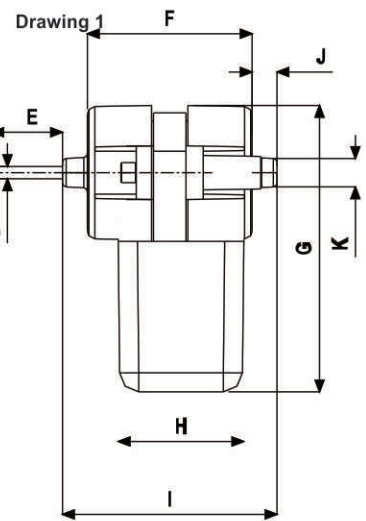
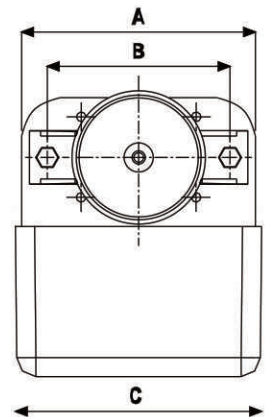
8, Industrial Area, Ambala Cantt India - 133 006, Phones : +91-171- 2699935/2699529/2698043
Fax : +91-171-2699008/2699221 E-mail: micro1@vsnl.com , Web Site : www.microinstrumentsco.com

BLDC 2 POLE MOTOR

MECHANICAL DIMENSION (Drawing 1)

MODEL NO	A	B	C	D	E	F	G	H	I	J	K
MEC162S06A/1AL-NW1	61	47.6	64	3.18	30	40	75	34	56	8	7.6
MEC162S06A/1AL-NW2	61	47.6	64	3.18	30	40	75	34	56	8	7.6
MEC162S08A/1AL-NA1	61	47.6	64	3.18	29	42	75	34	58	8	7.6
MEC162S06A/2AL-NW3	61	47.6	64	3.18	30	40	75	34	56	8	7.6
MEC162S06A/2AL-NW4	61	47.6	64	3.18	30	40	75	34	56	8	7.6
MEC162S08A/2AL-NA2	61	47.6	64	3.18	29	42	75	34	58	8	7.6
MEC262S06A/3DL-NW5	61	47.6	64	3.18	30	40	75	34	56	8	7.6
MEC262S06A/3DL-NW6	61	47.6	64	3.18	30	40	75	34	56	8	7.6
MEC262S08A/3DL-NA3	61	47.6	64	3.18	29	42	75	34	58	8	7.6
MEC262S13A/3DL-NE1	61	47.6	64	6.34	52	47	78.5	40	57	2	13
MEC262S17A/3DL-NS1	61	47.6	64	6.34	59	50	78.5	44.5	60	2	13
MEC262S17A/3DL-NS2	61	47.6	64	6.34	59	50	78.5	44.5	60	2	13
MEC262S06A/4DL-NW7	61	47.6	64	3.18	30	40	75	34	56	8	7.6
MEC262S06A/4DL-NW8	61	47.6	64	3.18	30	40	75	34	56	8	7.6
MEC262S08A/4DL-NA4	61	47.6	64	3.18	29	42	75	34	58	8	7.6
MEC262S13A/4DL-NE2	61	47.6	64	6.34	52	47	78.5	40	57	2	13
MEC262S17A/4DL-NS3	61	47.6	64	6.34	59	50	78.5	44.5	60	2	13
MEC262S17A/4DL-NS4	61	47.6	64	6.34	59	50	78.5	44.5	60	2	13
MEC262S06A/5DL-NW13	61	47.6	64	3.18	30	40	75	34	56	8	7.6
MEC262S06A/5DL-NW14	61	47.6	64	3.18	30	42	75	34	56	8	7.6
MEC262S08A/5DL-NA7	61	47.6	64	3.18	29	42	75	34	58	8	7.6
MEC262S13A/5DL-NE5	61	47.6	64	6.34	52	47	78.5	40	57	2	13
MEC262S17A/5DL-NS9	61	47.6	64	6.34	59	50	78.5	44.5	60	2	13
MEC262S17A/5DL-NS10	61	47.6	64	6.34	59	50	78.5	44.5	60	2	13
MEC262S06A/1AL-NW9	61	47.6	64	3.18	30	40	75	34	56	8	7.6
MEC262S06A/1AL-NW10	61	47.6	64	3.18	30	40	75	34	56	8	7.6
MEC262S06A/1AL-NA5	61	47.6	64	3.18	30	40	75	34	56	8	7.6
MEC262S06A/1AL-NE3	61	47.6	64	3.18	30	40	75	34	56	8	7.6
MEC262S06A/1AL-NS5	61	47.6	64	3.18	30	40	75	34	56	8	7.6
MEC262S06A/1AL-NS6	61	47.6	64	3.18	30	40	75	34	56	8	7.6
MEC262S06A/2AL-NW11	61	47.6	64	3.18	30	40	75	34	56	8	7.6
MEC262S06A/2AL-NW12	61	47.6	64	3.18	30	40	75	34	56	8	7.6
MEC262S08A/2AL-NA6	61	47.6	64	3.18	29	42	75	34	58	8	7.6
MEC262S13A/2AL-NE4	61	47.6	64	6.34	52	47	78.5	40	57	2	13
MEC262S17A/2AL-NS7	61	47.6	64	6.34	59	50	78.5	44.5	60	2	13
MEC262S17A/2AL-NA8	61	47.6	64	6.34	59	50	78.5	44.5	60	2	13

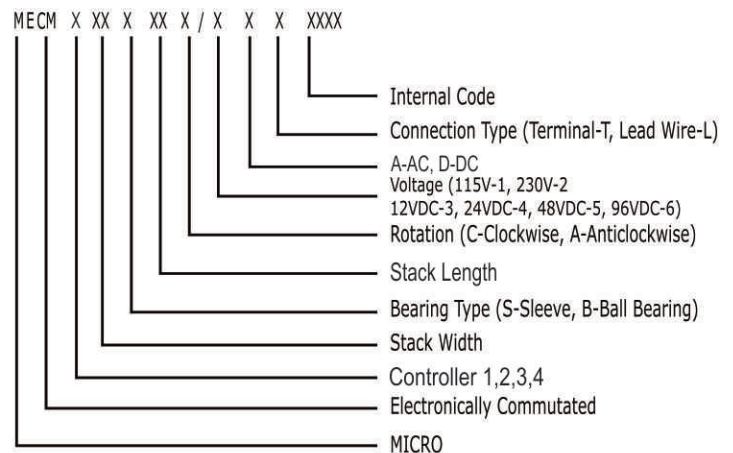
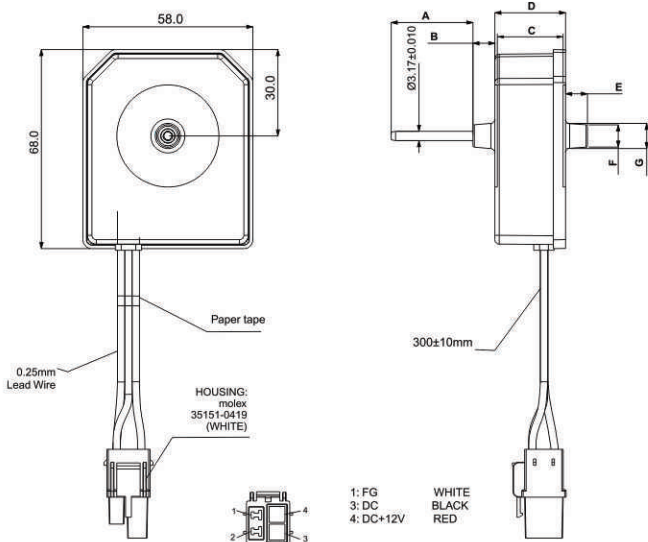
Drawing 1



MECHANICAL DIMENSION (Drawing 2)

MODEL NO	A	B	C	D	E	F	G	H	I	J	K
MEC247S06A/3DL-GW1	28	7.5	—	24.2	7.5	ø7.6	ø8.6	—	—	—	—
MEC247S06A/3DL-GW2	54.2	7.5	21.2	24.2	7.5	ø7.6	ø8.6	—	—	—	—

Drawing 2



2 POLE BLDC 17



MICRO INSTRUMENTS CO.

8, Industrial Area, Ambala Cantt India - 133 006, Phones : +91-171- 2699935/2699529/2698043
Fax : +91-171-2699008/2699221 E-mail: micro1@vsnl.com , Web Site : www.microinstrumentsco.com