



MICROSTEPPING BIPOLAR STEPEPR MOTOR DRIVERS FOR MOTION CONTROLLING AND ROBOTICS



GENERAL SPECIFICATION

Stepper Motor Model	EMM110S201-190
Step Angle	1.8 Degrees per step
Optimum Motor Temperature	80 Degrees C Maximum
Operating Ambient Humidity	90% RH,40' Max (No Condensation)
Insulation Resistance	100M Ohm Min,500V DC Megger at normal room temperature and humidity
Maximum Radial Force	220N (20mm From the Flange)
Maximum Axial Force	60 N-M
Dielectric Strength	At normal room temperature and humidity motor can withstand 1500V AC Can be mounted in both Horizontal And vertical direction
Thermal Class	Class B (+130 Degree C)
Mounting Direction	Can be mounted in both horizontal and vertical derection
Protection Grade	IP 40
Shaft Radial Play	0.02mm Maximum (450Gms Load)
Shaft Axial Play	0.08mm Maximum(450 Gms Load)
Operating Ambient Temperature	- 20°C TO +50' C
Storage Temperature	- 20°C TO +60°C

ELECTRICAL SPECIFICATION

No of Phase	2 Phase
Stepping Angle	1.8 Degrees per step
Voltage Per Phase	3.67 V
Current Per Phase	5.88 Amps
Resistance Per Phase	0.8 Ohms
Inductance Per Phase	15 mH
No Of Leads	4 Wire

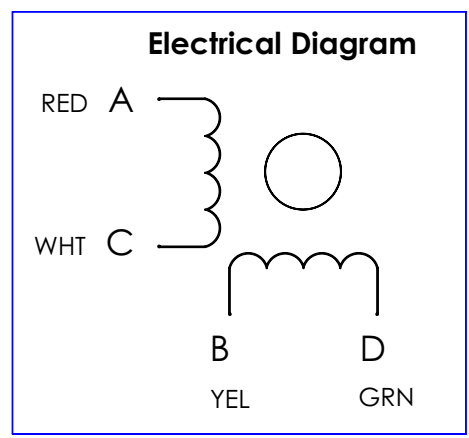
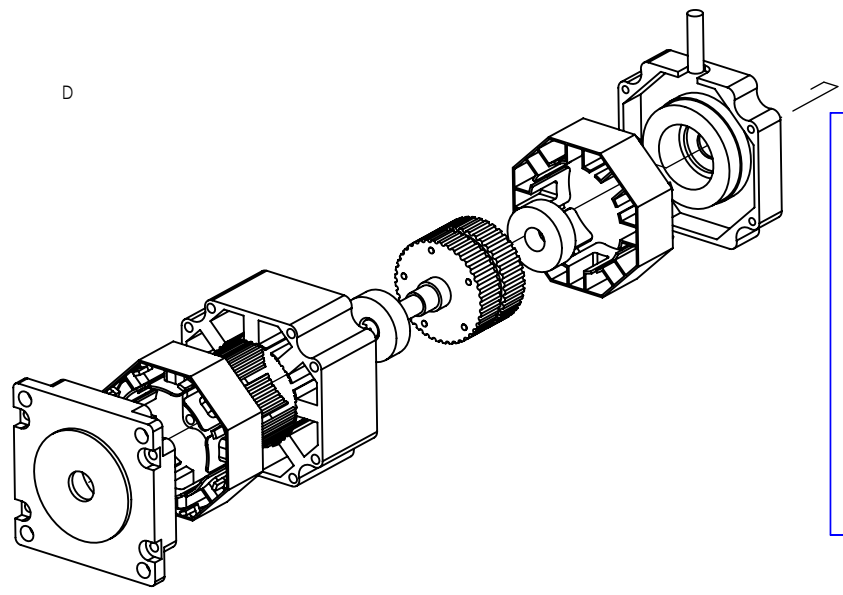
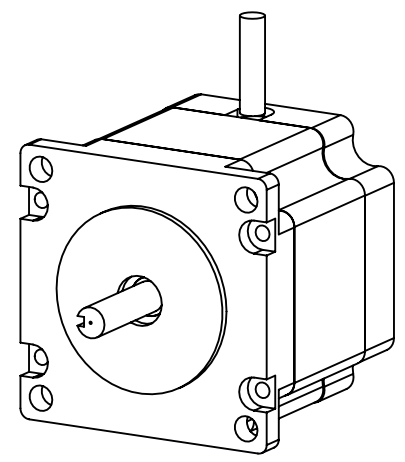
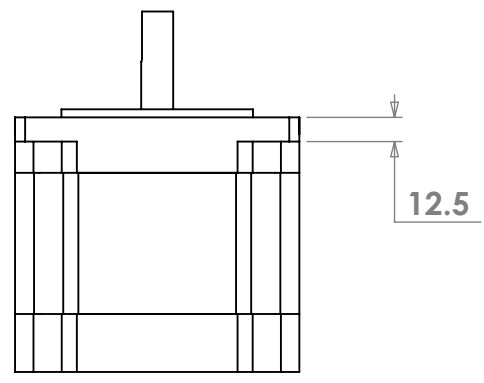
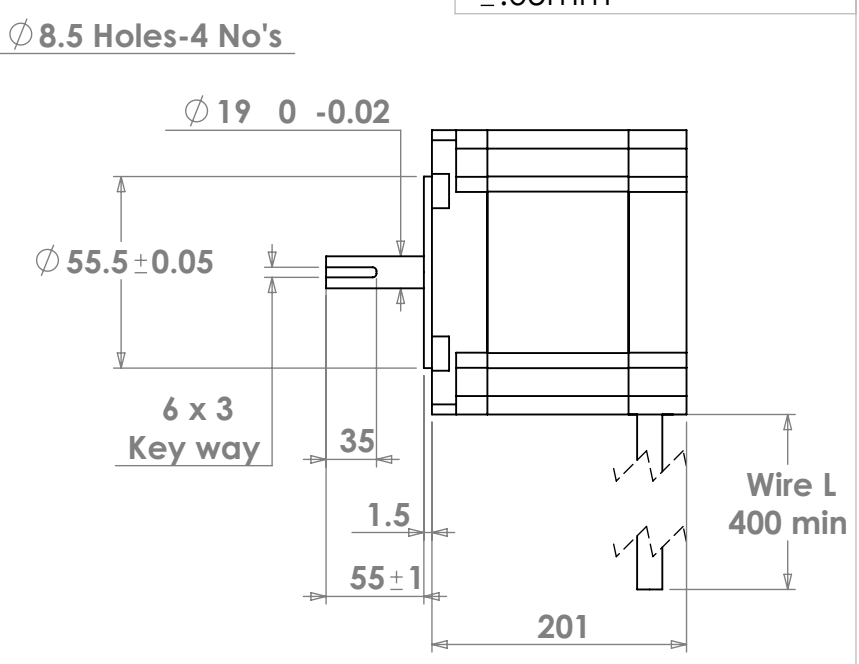
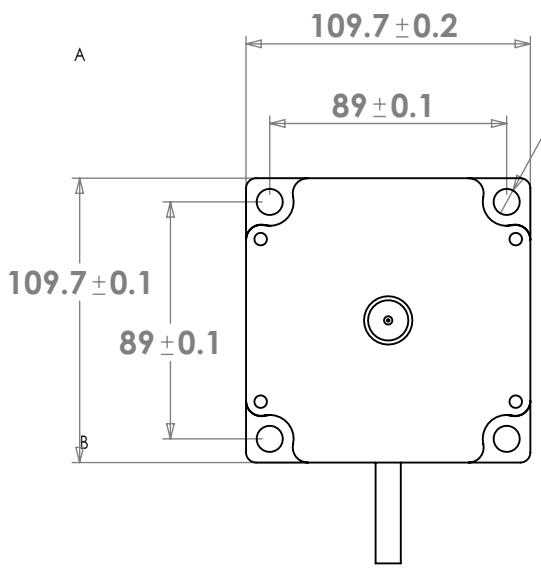
MECHANICAL SPECIFICATION

Holding Torque	240 Kg-Cm
Detent Torque	5.9 Kg-Cm
Rotor Inertia	10900 Gm-Cm
Motor Mass	8.4 Kg

EM MOTION MODULES

#114,6th Cross, 3rd Main, BHCS Layout, Subramanyapura Post
Uttarahalli, Bangalore - 560061, Ph: 080-26395978/9686143312/8762388697
Email: emechdrives@gmail.com / emmotionmodules@bsnl.in

Unspecified tolerances
±.05mm



The information in this Drawing is the sole property of EM MOTION MODULES . Any reproduction of the part or a whole without written permission from EM MOTION MODULES is strictly prohibited.



EM MOTION MODULES

Part Name : NEMA-34

Drg No. :

Part No : EMM110S201-190

Revision status :

Assembly : 2 PHASE STEPPER MOTOR