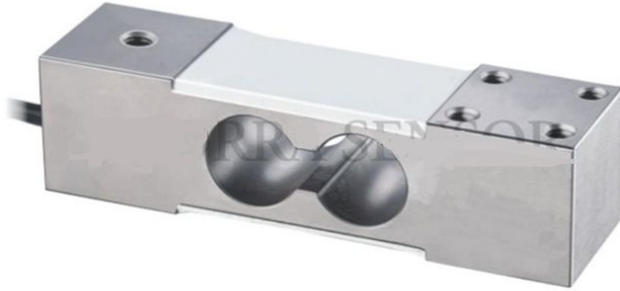


Model : RSL 310

SINGLE - POINT PLATFORM LOAD CELL



Features :

- *Tool steel Construction for Harsh application
- *Low profile
- *Single point Capability with minimum error for off-centre loading
- *Support platform scale with size up to 600 x 600 (mm)
- *Compact, Light Weight & Economical

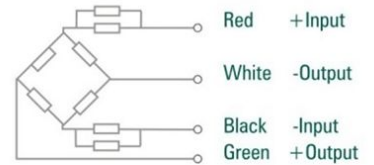
Applications :

- *Smaller Sized Economical Platform Scales
- *Check Weighers
- *Bag Weighers

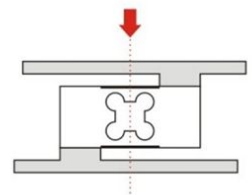
Parameters :

Rated Load (kg.) 75, 100, 150, 200, 250, 300, 500			
Precision	C2 / C3	Insulation Resistance(MΩ)	≥20000(50VDC)
Composition Error	0.03 / 0.02	Excitation Voltage (V)	5~15 (DC)
Rated Output (mv/v)	2.0±0.2	Compensated temp. Range (°C)	-10~ +50
Non-Linearity (%FS)	0.025	Use Temp. Range	-20~ +60 °C
Hysteresis (%FS)	0.01	Temp. Effect on Zero (%FS/10°C)	0.02
Repeatability(%FS)	0.02 / 0.01	Temp. Effect on Span (%FS/10°C)	0.02
Creep (%FS/30min)	0.03 / 0.02	Safe Overload (%FS)	150
Zero Balance(%FS)	±1.0	Ultimate Overload (%FS)	250
Input Resistance (Ω)	390±10	Defend Grade	IP67
Output Resistance (Ω)	350±2	Cable	6mm, 2.5mtr.

Wiring Schematic Diagram :



Load Diagram :



Dimensions :

