

AV-40 Bronze Globe Valve (Screwed Ends)

Features

Screwed in Bonnet, Inside Screw, Rising Stem, Integral Seat, Screwed Female BSP Parallel Threads to BS 21

Test Pressure

Body : 300 Psig (Hyd.)

Seat : 200 Psig (Hyd.)

Testing Standard

BS EN 12266 Part-1

Note

Other Screwed End Specification can be provided on request.

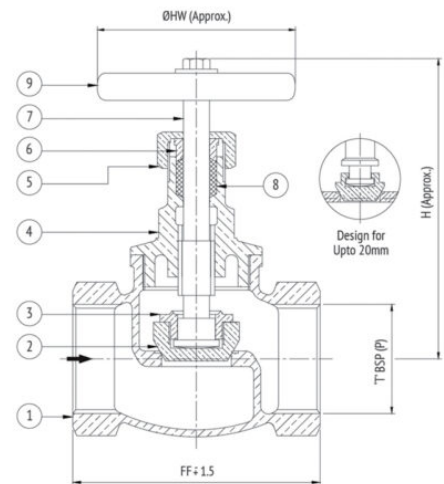
Suitability

Water, Oil



Material Combination

P.No.	Name of Part	Material	Specification
1	Body	Bronze	BS 1400 LG2
2	Disc	Bronze	BS 1400 LG2
3	Disc Nut	Bronze	BS 1400 LG2
4	Bonnet	Bronze	BS 1400 LG2
5	Gland Nut	Bronze	BS 1400 LG2
6	Gland	Bronze	BS 1400 LG2
7	Stem	Bronze	BS 1400 LG2
8	Packing	Asbestos	-
9	Handwheel	Cast Iron	BS 1452 Gr. 220



Dimensional Data

Nominal Size (mm)	FF ±1.5	ØW	H	T
8	39	44	71	1/4"
10	39	44	71	3/8"
15	49	50	77	1/2"
20	55	62	92	3/4"
25	67	66	98	1"
32	76	75	110	1.1/4"
40	82	87	120	1.1/2"
50	99	95	130	2"
65	128	115	155	2.1/2"
80	149	148	170	3"
100	191	160	240	4"