

FV-510 C.S.S. Investment Casting Ball Valve, Class-150

Features

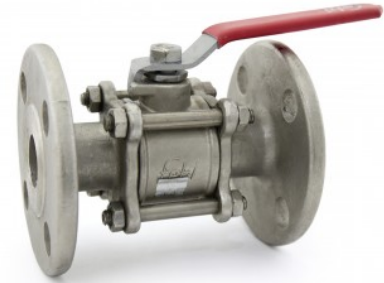
Three Piece Design, Full Bore, Renewable Seat, SS 304 Trim
Flanges as per ANSI b16.5 Class-150 (Drilled)
Product Specification : BS-17292/ API-6D

Test Pressure

Body - 30 Bar (Hyd.)
Seat - 22 Bar (Hyd.)
Testing Standard : API-598/ 12266-1

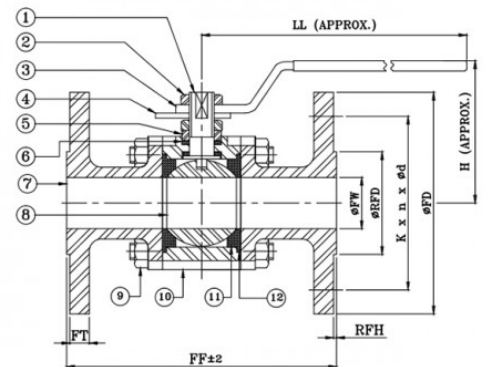
Suitability

Water, Steam, Gas, Oil, Air



Material Combination

P.No.	Name of Part	Material	Specification
1	Stem	Stainless Steel	ASTM A276 TYPE 304
2	Nut	Stainless Steel	ASTM A276 TYPE 304
3	Lever	Carbon Steel	(With Plastic Sleeve)
4	Stopper	Carbon Steel	-
5	Gland	Stainless Steel	ASTM A276 TYPE 304
6	Packing Ring	PTFE	-
7	Body Connector	C.Stainless Steel	ASTM A351 Gr. CF8
8	Ball	Stainless Steel	ASTM A351 Gr. CF8
9	Stud / Bolts & Nuts	Alloy Steel / H.T. Steel	ASTM A193 Gr. B7 / B8 / ASTM A194 Gr. 2H/8
10	Body	C.Stainless Steel	ASTM A351 Gr. CF8
11	Seat	PTFE	
12	Gasket	PTFE	



Dimensional Data

Nominal Size (mm)	FF ±2	FT	ØFW (Min.)	ØRFD	RFH	ØFD	K	n	Ød	LL	H
15	108	8	11	34.9	2	90	60.3	4	5/8"	167	55
20	117	8.9	17	42.9	2	100	69.9	4	5/8"	167	60
25	127	9.6	23	50.8	2	110	79.4	4	5/8"	180	72
40	165	12.7	37	73	2	125	98.4	4	5/8"	206	90
50	178	14.3	49	92.1	2	150	120.7	4	3/4"	230	100

k - P.C.D; n - Number of Holes; Ød - Diameter of Holes