

www.josts.com



Since 1907

# JOST'S DIESEL FORKLIFT

## JFD 30 | 3Ton

Internal Combustion  
Counterbalanced Forklift Truck



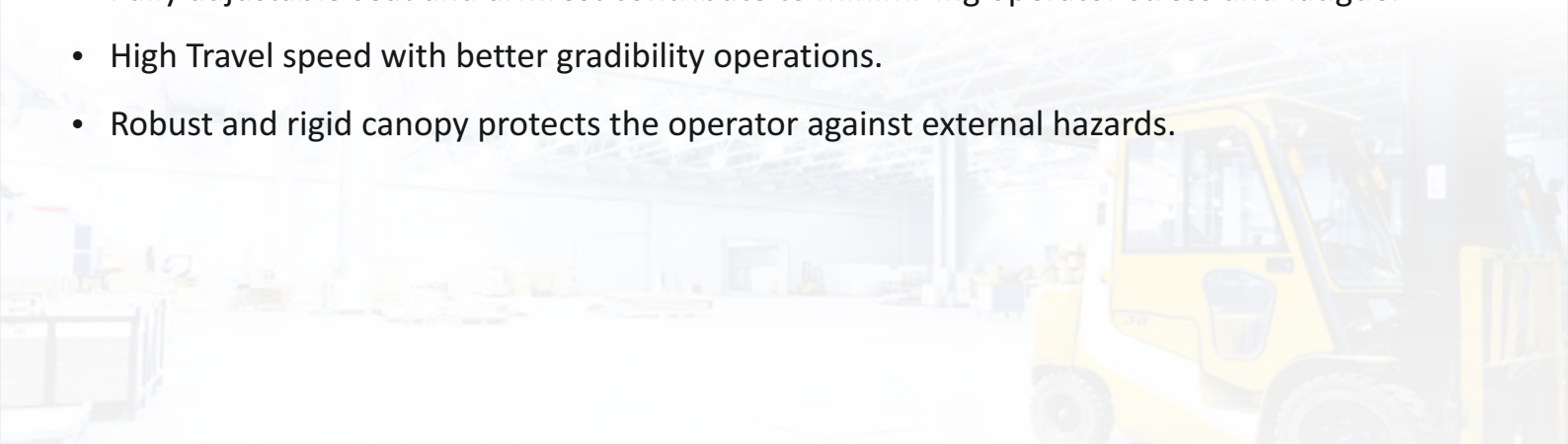
## Jost's Diesel Forklift JFD 30 | 3Ton

Josts high performance Diesel Forklift Truck of 3 ton capacity is constructed specially to fulfil the demand of various warehousing and industrial applications across various sectors like Iron and Metal , Warehouse and Logistics , Processing Units, Building Material Industries, Chemical Industries and Forwarding Agents.

**The forklift truck comes with special designed engine to ensure high torque with powerful acceleration and smooth drive characteristics for use in ramps and gradients.** The advance engine design enables the operator to accelerate and decelerate smoothly and without shift-shock, at slow pace or at full speed. The forklift trucks are engineered to take care of the tough jobs and is effective and cost efficient without equal.

### Salient features of Jost's manufacturer Diesel Forklift are: -

- Jost's Diesel Forklift comes with latest and newly developed **Simpson Engine** with side Power Takeoff which enhances easy servicing.
- Jost's Diesel Forklift is fitted with C-Z mast that enables the viewing experience for operator.
- Jost's Diesel Forklift comes with high-top air intake system to keep the engine out of dust and enhance engine performance.
- Jost's Diesel Forklift comes with a vertical exhaust system that enhances the easy servicing and allow the least contact of fumes.
- Jost's Diesel Forklift offers best gradient performance in its class.
- Fully adjustable seat and armrest contribute to minimizing operator stress and fatigue.
- High Travel speed with better gradability operations.
- Robust and rigid canopy protects the operator against external hazards.



## Features of Jost's Diesel Forklift JFD 30 | 3Ton Trucks

<p><b>Operator's Area</b></p>  <ul style="list-style-type: none"> <li>• Spacious operator's cab makes it less claustrophobic.</li> <li>• Tilt adjustable steering wheel.</li> <li>• Ergonomically positioned Hydraulic levers and directional controls.</li> <li>• High quality adjustable seat with safety belt.</li> </ul>	<p><b>Electronics</b></p>  <ul style="list-style-type: none"> <li>• Instantaneous reading when switched on.</li> <li>• Protection against water and dust.</li> <li>• Ergonomical layout of analog design instrument cluster.</li> </ul>	<p><b>Wide view / smooth landing Mast</b></p>  <ul style="list-style-type: none"> <li>• Wide mast gives excellent operator view.</li> <li>• Reinforced section for safe operation.</li> <li>• Smooth and jerk free operation.</li> <li>• Intelligent system Due to mast downing and buffering.</li> </ul>
<p><b>Canopy</b></p>  <ul style="list-style-type: none"> <li>• Made of high quality solid steel.</li> <li>• Protection against external hazard.</li> <li>• Ease in visibility.</li> </ul>	<p><b>Chassis and Counter Weight</b></p>  <ul style="list-style-type: none"> <li>• Low center of gravity design.</li> <li>• Quality steel plates welded body.</li> <li>• Large opening for effective engine cooling.</li> <li>• Adequate balancing for safe &amp; stable operations.</li> </ul>	<p><b>Easy Maintenance</b></p>  <ul style="list-style-type: none"> <li>• Easily accessible components.</li> <li>• Easily available spare parts.</li> <li>• Heat insulation / vibration absorption.</li> </ul>
<p><b>Air Filter</b></p>  <ul style="list-style-type: none"> <li>• High quality air filter.</li> <li>• Proper air sealing.</li> </ul>	<p><b>Air intake</b></p>  <ul style="list-style-type: none"> <li>• Snorkel type air intake.</li> <li>• Situated on pillar overhead guard.</li> <li>• Ensures clean air intake.</li> </ul>	<p><b>Anti-skid footstep</b></p>  <ul style="list-style-type: none"> <li>• Large visible step.</li> <li>• Easy and safe mounting on the chasses.</li> </ul>
<p><b>Transmission and Drive</b></p>  <ul style="list-style-type: none"> <li>• Optimised power transfer with maximum effectiveness.</li> <li>• Precise adjustment of drive and hydraulic functions.</li> <li>• Precise control of truck speed.</li> <li>• Sensitive driving under lift conditions.</li> <li>• BS III Engine.</li> </ul>	<p><b>Reliable steering axle</b></p>  <ul style="list-style-type: none"> <li>• Articulation hydraulic steering.</li> <li>• Accurate steering geometry.</li> <li>• Short turning radius.</li> </ul>	<p><b>Large Tyre</b></p>  <ul style="list-style-type: none"> <li>• Ensures better stability, carrying capacity &amp; high ground clearance.</li> <li>• Split rim construction provides adequate resilience.</li> <li>• Better Ground grip.</li> </ul>

## Mast Details

Mast Type	Lift height h3 (mm)	Free Lift h5 (without LBR) (mm)	Extended Mast Height (without LBR) h4 (mm)	Closed Mast Height h1 (mm)	Residual Capacity (Kg)	Tilt Angle $\alpha/\beta$
2 Stage	3060	120	3710	2240	3000	6°/12°
2 Stage	3660	120	4310	2540	3000	6°/12°
3 Stage	4560	1560	5135	2235	2400	6°/6°

## Accessories

### Standard Accessories

Engine Oil Pressure warning Indicator
Engine Water temperature indicator
Flashing Light
Head Lights
Hand Brake
Horn
Hose Burst valve
Seat Belt
Side Mirror
Side Indicator
Reverse Horn
Rear combination light
Neutral Safety Switch

Fork Carriage stopper
Fuel meter
Hour Meter
Load Back rest
Over head Air Intake
Reflectors
Registration plate lamp
Warning triangle

### Durability

Dual Element Air cleaner
Full Floating drive axle with Drum Brake
High Pressure Hoses
Water proof connectors

### Comfort

Adjustable steering Column
Integrated Instrument Analog Cluster
Steering wheel Knob

### Environment

Emission Norm Compliance BS III
---------------------------------

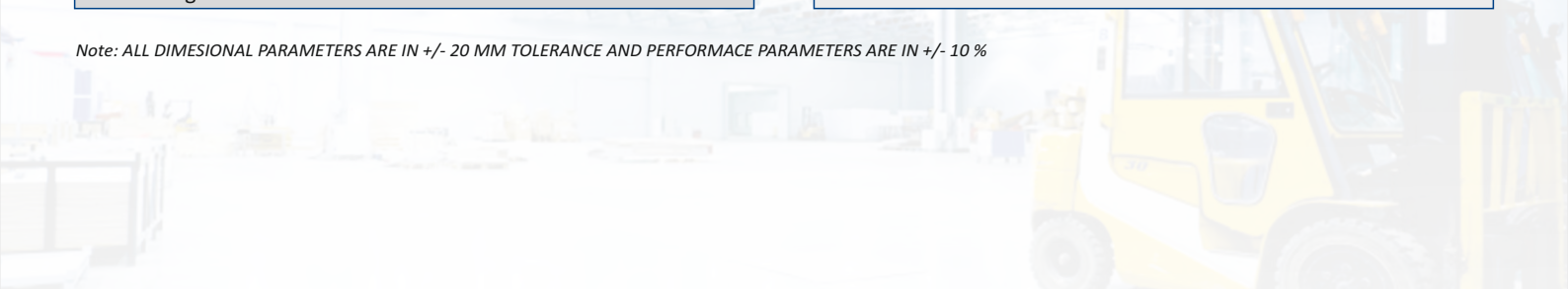
### Optional Accessories

Blue spot light
Fire Extinguisher
Fork camera
Side red light

### Serviceability

Engine with side PTO
Removable Floor Plate
Side removal of battery

Note: ALL DIMENSIONAL PARAMETERS ARE IN +/- 20 MM TOLERANCE AND PERFORMANCE PARAMETERS ARE IN +/- 10 %





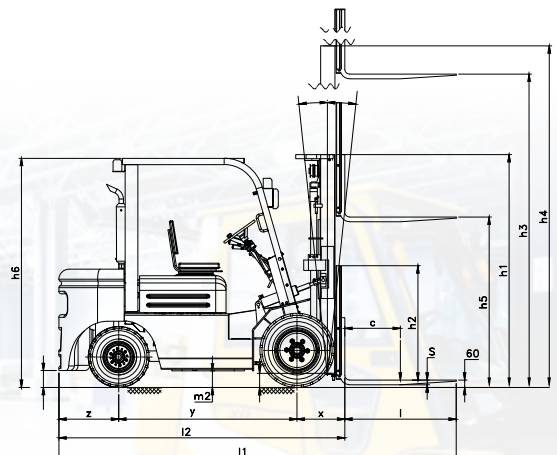
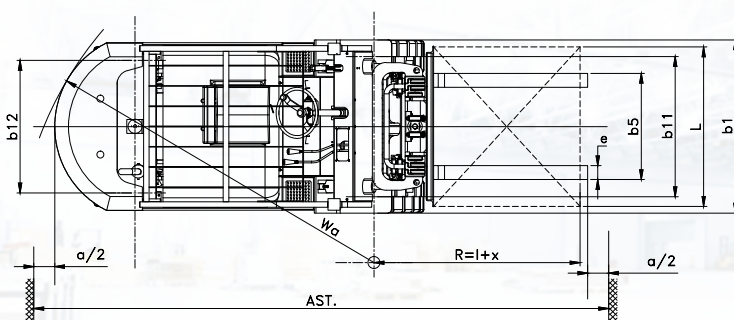
# Jost's Diesel Forklift JFD 30 | 3Ton



Since 1907

## TECHNICAL SPECIFICATION FOR DIESEL FORKLIFT

Characteristics			
1	Model		JFD30
2	Capacity	Q = Kg.	3000
3	Load Center	c = mm	500
4	Engine	type	Diesel
5	Operation	type	Seated
Dimensions			
6	Load distance (from load wheel to fork face)	x = mm	460
7	Wheelbase	y = mm	1710
8	Track width- Front	b11 = mm	1000
9	Track width - Rear	b12 = mm	970
10	Backrest height (from upper face of forks)	h2 = mm	1100
11	Overhead guard (cab) height	h6 = mm	2200
12	Free lift height (without LBR)	h5 = mm	1560
13	Lift Height (STD.)	h3 = mm	4560
14	Overall length (with forks)	l1 = mm	3820
15	Overall length (upto face of forks)	l2 = mm	2750
16	Overall width	b1 = mm	1240
17	Fork dimensions	s / e / l = mm	45 / 125 / 1070
18	Fork carriage	ISO class	3A
19	Width over forks (min. / max.)	b5 = mm	278 / 1002
20	Ground clearance, center of wheel base (unladen)	m2 = mm	160
21	Aisle width for (W) 1200 x (L) 1000	Ast = mm	4230
22	Turning radius	Wa = mm	2460
Performance			
23	Travel speed, laden / unladen	km / h	16 / 16
24	Lift speed, laden / unladen	mm / s	450 / 500
25	Lowering speed, laden / unladen	mm / s	450 / 400
26	Gradient performance, laden / unladen (max.)	%	18 / 18
Weight			
27	Service weight	kg	4650
Tyres & Brakes			
28	Wheels, number front / rear (x = driven wheels)	nos.	2 x 2
29	Tyres	type	Solid Cushion
30	Tyres size, front	inch	28 x 9 - 15
31	Tyres size, rear	inch	6.5 - 10
32	Service brake	type	Hydraulic
33	Parking brake	type	Mechanical
Drive and Transmission Control			
34	Engine model	type	Simpson S433
35	Rated power (GROSS)	BHP @ rpm	48 @ 2200 ± 5%
36	Rated torque (Nm @ RPM) Appx	Nm @ rpm	195 @ 1100-1500 ± 5%
37	Specific fuel consumption (SFC) @ Rated speed	g / bhp-h @rpm	187.4 @ 2200
38	Engine cylinders / Displacement	nos. / cc	04 / 3300
39	Transmission	g / bhph @rpm	Automatic
40	No of speeds forward / reverse	nos.	1 / 1
41	Battery voltage, nominal capacity	V / Ah	12 / 80
42	Hydraulic oil tank capacity	lit.	50
43	Fuel tank capacity	lit.	50



**Note:** ALL DIMENSIONAL PARAMETERS ARE IN +/- 20 MM TOLERANCE AND PERFORMANCE PARAMETERS ARE IN +/- 10 % FOR ANY SPECIAL REQUIREMENT CONTACT HO . RIGHT TO MAKE CHANGES AND TECHNICAL IMPROVEMENT RESERVED

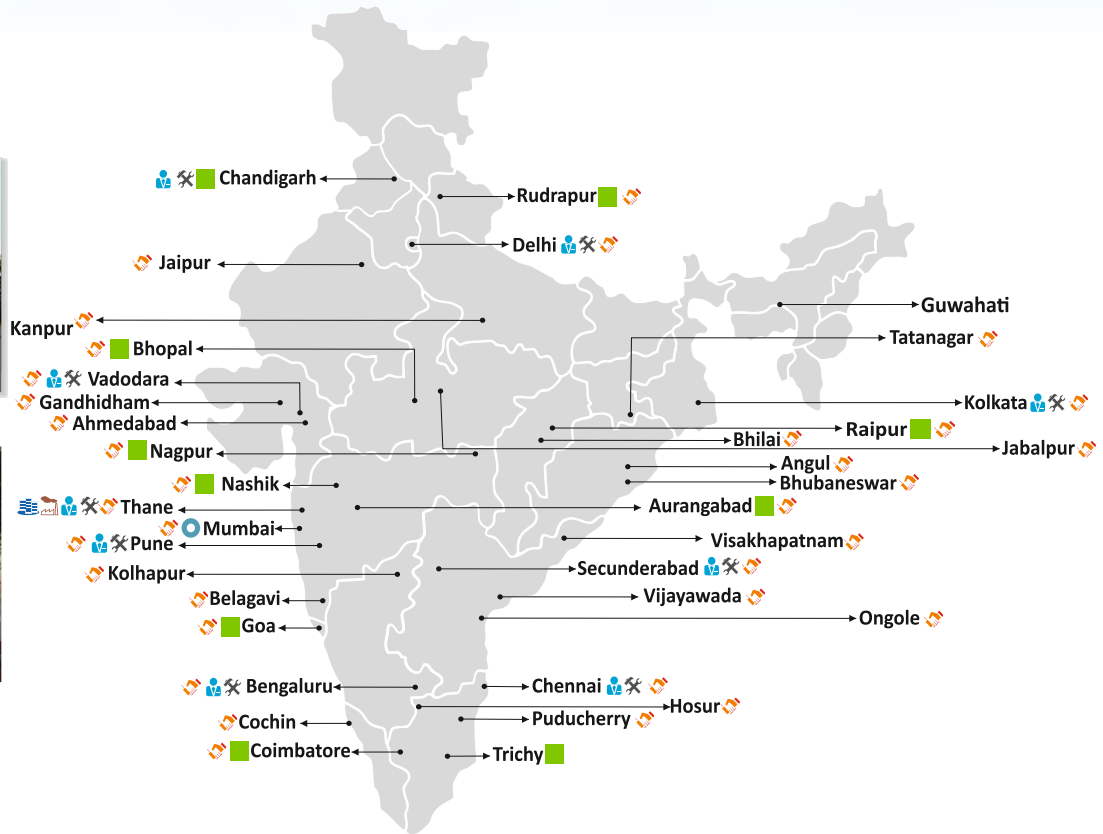
# Jost's Diesel Forklift JFD 30 | 3Ton



Since 1907



Thane Factory



Registered Office Factory Head Office Sales Office Service Office Resident Engineers Dealer

## Factory

Thane (Factory/Head Office)   
 C-7 Wagle Industrial Estate, Road No 12, Thane 400604  
 T: +91-22-6267-4000 E-mail: jostfact@josts.in W: www.josts.com

## Sales & Service Office

**Bengaluru**   
 F-07 & H-07, 7th Floor, "SOLUS", Jain Heights South Wing, No. 2, 1st Cross,  
 J C Road, Bengaluru 560027  
 T.: +91-80-4123-4775/4123-4885 E.: sales@josts.in

**Pune**   
 Plot No. - 3, S. No. - 126, Paud Road, Pune - 411038  
 T.: +91-20-2543-4565 / 2543-4390 F.: +91-20-2543-4393 E.: sales@josts.in

**Chennai**   
 C-39, II Avenue, Annanagar, Post Box 3477, Chennai - 600040.  
 T.: +91-44-2626-8536 / 2628-8407 F.: +91-44-2621-1708 E.: sales@josts.in

**Secunderabad**   
 Plot No.22,28/2, Layout P&T Colony, Ravi Co-op Housing Society,  
 Trimulgherry Secunderabad-500015  
 T.: +91-40-2771-4934 / 44 / 54 F.: +91-40-2771-2655 E.: sales@josts.in

**Kolkata**   
 19, British Indian Street, Post Box 64, Kolkata - 700069.  
 T.: +91-33-2242-9510 / 4008-1242 F.: +91-33-2248-0861 E.: sales@josts.in

**Vadodara**   
 Office No.111, 1st floor, Sakar Complex, Soma Talav Tarasali ring road, opp.  
 Bansal Mall, Near Guru Nanak Public School, Danteshwar,  
 Vadodara 390009.  
 T: +91-265-2351-642 E.: sales@josts.in

**New Delhi**   
 1003, Pearls Business Park, Netaji Subhash Place, Pritam Pura, Delhi - 110034  
 T: +91-011- 4160-7989 E.: sales@josts.in

MKT:11:00:060:0621

Dial-a-care: 1800-2745-661