

ECG 600G

Technical parameters

1. Normal work environment

Operation

- a) Environment temperature: $+5^{\circ}\text{C}\sim+35^{\circ}\text{C}$
- b) Relative humidity: $\leq 80\%$
- c) Power supply: AC: 100V~240V, 50/60Hz
DC: 7.4V, 3700 mAh rechargeable lithium battery
- d) Atmospheric pressure: 86kPa~106kPa

2. Store and Transportation

- a) Environment temperature: $-40^{\circ}\text{C}\sim+55^{\circ}\text{C}$
- b) Relative humidity: $\leq 95\%$
- c) Atmospheric pressure: 50kPa~106kPa

3. Input way: Floating and defibrillation protection

4. Lead: Standard 12 leads

5. Patient leak current: $<10\mu\text{A}$

6. Input impedance: $\geq 50\text{M}\Omega$

7. Frequency response: 0.05Hz~150Hz(-3dB~+0.4dB)

8. Time constant: Time constant $\geq 3.2\text{s}$

9. CMRR: $>60\text{dB}$, $>100\text{dB}$ (Add filter)

10. EMG filter: 25Hz/35Hz (-3dB)

11. AC filter: 50Hz/60Hz ($\geq 20\text{dB}$)

12. Recording way: Thermal printing system

13. Specification of recording paper: 110mm(W)*20m(L) High-speed thermal paper

14. Paper speed:

Auto-record: 5mm/s, 6.25mm/s, 10mm/s, 12.5mm/s, 25mm/s, 50mm/s, 100mm/s, error: $\pm 5\%$

Rhythm record: 5mm/s, 6.25mm/s, 10mm/s, 12.5mm/s, 25mm/s, 50mm/s, 100mm/s, error: $\pm 5\%$

Manual-record: 5mm/s, 6.25mm/s, 10mm/s, 12.5mm/s, 25mm/s, 50mm/s, 100mm/s, error: $\pm 5\%$

Sensitivity choice: 2.5/5/10/20/40mm/mV, error: $\pm 5\%$. Standard sensitivity is 10mm/mV $\pm 0.2\text{mm/mV}$

15. Auto-record: record following the record format and auto-mode, auto leads-changing, auto measurement and analysis.

16. Rhythm record: record following the rhythm format and rhythm mode, auto measurement and analysis.

17. Manual record: record following the record format, manual leads-changing.

18. Measurement parameters: HR, P-R interval, P Duration, QRS Duration, T Duration, Q-T interval, Q-Tc, P Axis, QRS Axis, T Axis, R(V5), S(V1), R(V5)+S(V1)

19. Enduring polarization voltage: $\pm 500\text{mV}$

20. Sampling precision: 12bits

21. sampling rate: 1000Hz

22. Noise level: $\leq 15\mu\text{Vp-p}$

Accessories

Sell in standard

User manual 1 set

Lead cable 1 set

Limb electrode clamp 1 set

Chest electrode 1 set

Wire group 1 set

Equipotential connecting wire 1 set

Thermal recording paper 1 set

Sell in addition

Synchro uploading line

Physical Identity

Size: 315mm(L)*215mm(W)*92mm(H)

Net Weight: 1.7Kg

Certification

CE

ECG 600G Electrocardiograph



ECG600G six channel ECG is such a kind of electrocardiograph, which samples 12 leads ECG signals simultaneously and prints out the ECG waveforms with thermal printing system. Its functions are as follows: Recording and displaying ECG waveforms in auto/manual mode; Auto-measuring and auto-diagnosing the ECG wave parameters; Prompting the state of lead off and paper lack; Switching several kinds of interface languages; Managing the case database.

CONTEC MEDICAL SYSTEMS CO.,LTD

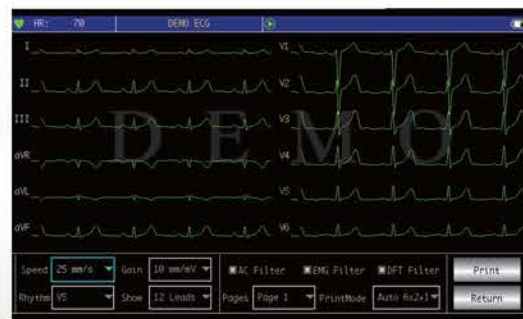
NO.112 Qinhuang West Street, Economic & Technical Development Zone, Qinhuangdao, Hebei Province, PEOPLE'S REPUBLIC OF CHINA
Tel: 0086-335-8015430
Fax: 0086-335-8015588
E-mail: cms@contecmed.com.cn contec88@gmail.com
Website: <http://www.contecmed.com>

CONTEC reserves the right of product appearance, specifications and function modification and updating, without prior notification. CMS2.782.120EXC/1.0 1.4.03.01.310

CONTEC™

ECG 600G

Electrocardiograph



| Date And Time | ID | Name | Sex | TimeLen |
|---------------------|------|------|-----|---------|
| 1978-01-16 04:23:14 | 1233 | RL | | 00:10 |
| 1978-01-13 20:20:40 | 895 | | | 00:10 |
| 1978-01-13 20:17:28 | 8979 | | | 00:03 |
| 1978-01-07 02:05:39 | 9076 | | | 00:20 |
| 1978-01-04 00:33:20 | | | | 00:10 |

Features

- 7" TFT color screen is 800*480, touch screen and function key control at the same time, more convenient and shortcut.
- It is high resolution thermal printer and thermal-array (8 dots/mm), you should not adjust anything Frequency Response is up to 150Hz.
- The device can record real time clear and exact six channel ECG waveform and remark continually. The remark includes: lead sign, sensitivity, paper speed, filter state, etc.
- Full digital filter for resisting baseline draft, AC and EMG interference.
- Adjust the baseline automatically, optimize the print setting, and choose the rhythm leads.
- Under automatic mode, just press the button once, it starts record procedure, which can enhance your work efficiency.
- The power supply includes both AC/DC. This device includes built-in lithium rechargeable battery, automatic protection circuit, and it will shut automatically if there is no operation for 5 minutes.
- This instrument can record 190 pieces of ECG waveform and print 120 minutes continually under the best DC state.
- This instrument can store more than 1000 pieces patient's data, more convenient for data review and statistic.
- The figure of whole device is elegant and gliding.
- Digital signal processor for effective inhibition of baseline drift, interference, and the like.
- The instrument has function with regular auto-measurement of ECG waveform parameter, auto-analyze and auto-diagnostic, it will help to reduce doctor's burden and improve working efficiency.
- Sampling twelve leads ECG signal at the same time, analyzing 2×6+1(rhythm lead), 2×6, 3×4, 3×4+1(rhythm lead), 4×3, 4×3+1(rhythm lead), 6×2, 6×2+1(rhythm lead), rhythm 2, rhythm 3, rhythm 4, rhythm 5, rhythm 6, rhythm 7 recording mode at the same time, and reporting with multi-formats.
- Multi-lead styles for observing the real-time wave of three leads, six leads or twelve leads, and displaying Lead Off and Lacking of paper, DEMO mode of ECG Waves .it can test the ECG parameter and analyze the report, register the wave with automatic or manual mode, it also can store the patients' information by data storeroom.
- Safety Class: Class I, Type CF applied part, which has defibrillation-proof applied part.
- According to defense degree of deleterious fluid: IPX0
- Support Chinese, English, Spanish, Turkish, Polish, Italian, German, Portuguese, Kazakhstan, Russian operating interface, can print out such language reports of the above.
- Timing print can be set to every 1/2/3/5/10/20/30/60 minutes.
- Print setting has several options, which can be set to "Print and save"(print waveform and save case), "Print no save"(only print waveform but not save case), "Save no print"(only save case but not print waveform).

