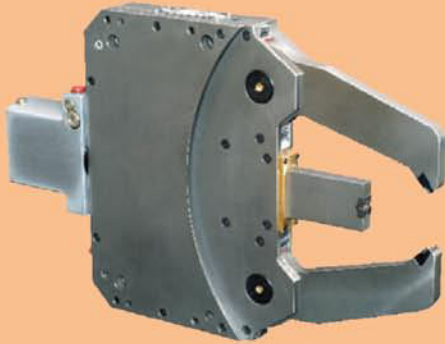
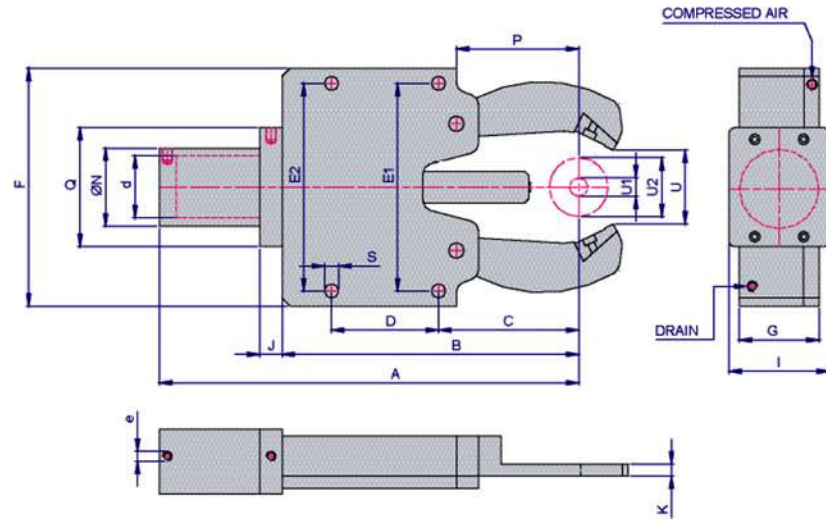


Model: KRGU (Crank Shaft Grinding Application)



	KRGHS790	KRGU1517	KRGU4510	KRGHS9585	KRGU502	KRGU580	KRGU1019	
A	420	518.5	465	590.5	508.5	565.5	502	
B	323	423	358	444	405	462	355.5	
C	190	230	165	254	236	293	162	
D	90	135	135	142	125	125	135	
E1	202	262	262	350	337	234	262	
E2	202	262	262	320	337	234	262	
F	234	290	290	400	363	260	290	
G	55	64	57	64	62	62	64	
I	62	68	68	72	68	68	72	
J	25	33	33	25	33	33	25	
K	10	16	10	21	10	12	24	
N	53	105	119	95	-	105	95	
P	158.4	206.4	141.5	194.5	206.8	268.4	133.4	
Q	96	141	148	130	141	141	130	
S	M12 X 1.75	14	18	18	22/14	20/14	18	
U1	70	150	45	95	50	50	100	
U2	90	170	105	185	102	80	190	
Max. axial opening	U	98	181	125	210	109	106.5	226
Eccentric throw (R value)	R	120	175	125	285	59.3	25	187.5
Cylinder bore.	d	40	50	50	60	50	50	60
Hyd. Connection (BSP)	e	1/4"	1/4"	1/4"	1/4"	1/4"	1/4"	1/4"
Standard operating pressure	bar	4-15	6-30	6-30	12-45	6-30	6-30	12-45
Max. operating pressure	bar	20	35	35	60	35	35	60
Max. clamp pressure/pad.	daN	60	196	196	425	196	196	425
Centering accuracy over the whole clamping range.	mm	0.005	0.01	0.01	0.01	0.01	0.01	0.01
Repeatability	mm	0.002	0.004	0.004	0.004	0.002	0.004	0.004