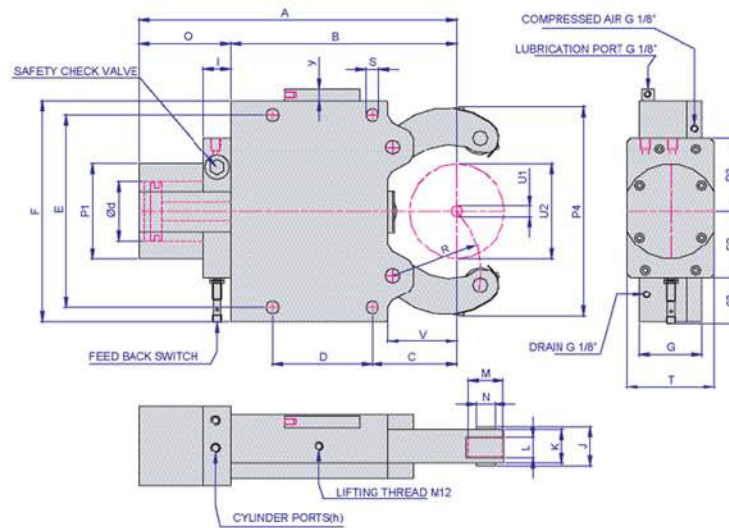


# Model: FRU



## Steady Model



### Standard Features:

- Safety Valve
- Provision for max. opening feedback
- 1 set swarf guard 3-piece
- Provision for compressed air connection
- Provision for centralized lubrication

	FRU1	FRU2	FRU3	FRU3.1	FRU3.2	FRU4	FRU5	FRU5.1	FRU6	FRU7	FRU8 (HS2630)	
A	212	298.5	462	470	486	624	706	731.5	980	1235.5	1404	
B	137	195	308	316	332	437	500	520	709	898	1000	
C	51	70	115	123	138	146	178	198	215	320	375	
D	64	85	135	135	135	240	270	270	330	440	500	
E	118	170	262	262	262	365	400	400	610/640	650	855	
F	132	205	290	290	290	400	450	450	680	720	930	
G	55	70	85	85	85	110	145	145	145	162	190	
I	-	33	37	37	37	37	37	37	46	60	60	
J	33	42	52	52	52	67	83	83	83	96	110	
K	25	35	45	45	45	60	75	75	75	82	100	
L	12	19	25	25	25	25	29	29	29	32	32	
M	19	35	47	47	47	52	62	62	80	100	100	
N	10	21	25	25	25	32	40	40	43	55	60	
O	75	103.5	154	154	154	187	206.5	211.5	271	337.5	385.5	
P1	82.5	105	137	137	137	165	165	165	190	238	238	
P2	27.5	66	92	90	93	102	102	102	115	143	143	
P3	55	75	92	94	93	110	110	110	130	158	158	
P4	118.5	188	279	279	323	415	473	509.5	732	869.5	976	
R	51.5	75	117.3	124	139	172	209	236	290	390	402	
S	11	14	18	18	18	23	23	23	27	27	35	
T	55	68	102	102	102	126	144	144	158	190	190	
V	37	60	91.5	99.5	109.5	128	160	180	182	292.5	295.5	
Y	-	19	19	19	19	19	20	20	27	27	27	
centering range without chip guard.	U1	4	8	12	20	50	30	45	85	125	191	230
	U2	64	101	152	165	200	245	310	350	460	530	630
Centering range with 3 piece chip guard.	U1	4	16	16	20	50	30	45	85	125	191	230
	U2	64	101	152	165	200	245	310	350	460	530	630
cylinder bore.	d	30	50	80	80	80	100	100	130	150	150	
hyd.connection. ( BSP)	h	1/4"	1/4"	1/4"	1/4"	1/4"	3/8"	3/8"	3/8"	3/8"	3/8"	3/8"
Operating pressure. Min/ Max	bar	6/50	8/60	8/60	8/60	8/60	8/60	8/80	8/80	8/70	6/70	6/70
Max.clamp force/roller	daN	100	350	1000	1000	1000	1500	2000	2000	3000	4000	4000
clamping press/roller at 15 bar	daN	35	100	250	250	500	500	500	500	670	900	900
centering accuracy over the whole clamping range	mm	0.02	0.02	0.04	0.04	0.04	0.05	0.06	0.06	0.06	0.08	0.08
Repeatability.	mm	0.005	0.005	0.007	0.007	0.007	0.007	0.01	0.01	0.01	0.02	0.02
Max.peripheral speed.	m/min	8.5	950	800	800	725	725	670	670	525	570	570
Weight Approx.	kg	7	18.5	42	42	43	104	155	160	430	700	1300