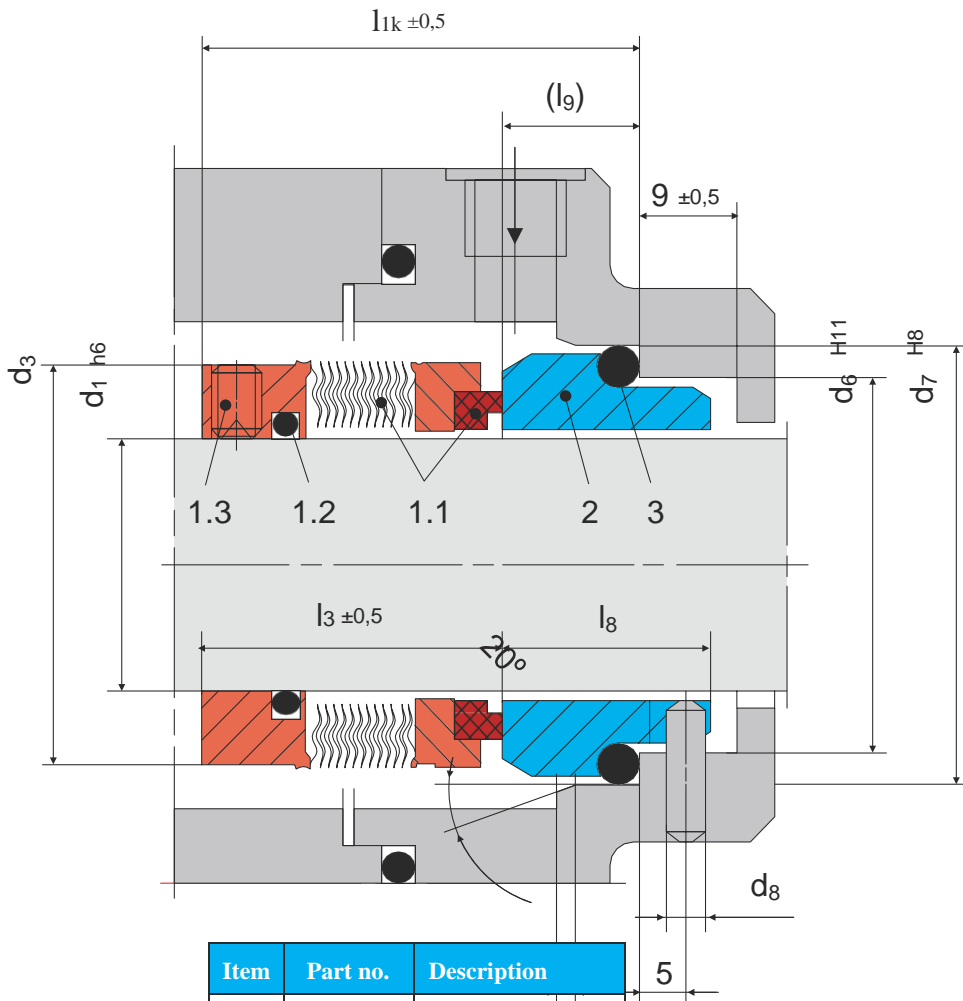


SFL850N



Item	Part no.	Description
1.1	472/481	Seal face with bellows unit
1.2	412.1	O Ring
1.3	904	Set Screw
2	475	Seat (G9)
3	412.2	O Ring
DIN 24250		

Description

Balanced
 For shafts without a step Independent of direction of rotation Metal bellows rotating
 Single seal

Technical Features

For extreme temperature ranges No dynamically loaded O-Ring
 Pumping screw for highly viscous media available
 Short installation length possible

Typical Industrial Applications

Chemical industry
 Cold media
 Highly viscous media
 Hot media
 Power plant technology
 Refining technology

Standards

EN 12756

Performance Capabilities

Sizes: d1 = Upto 100 mm (Upto 4.000'')

Externally pressurized:
 p1 = ... 25 bar (363 PSI)

Internally pressurized:

p1 < 120 °C (248 °F) 10 bar (145 PSI)

p1 < 220 °C (428 °F) 5 bar (72 PSI)

Temperature: t = -40 °C ... +220 °C (-40 °F ... 428 °F)

Stationary seat lock necessary. Speed = 20 m/s (66 ft/s)

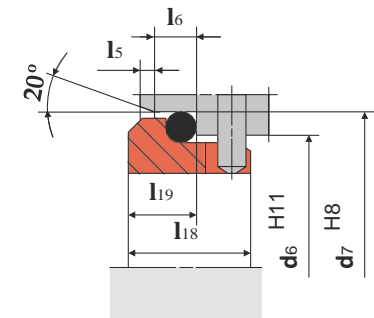
Materials

Seal face: Carbon graphite antimony impregnated (A), Silicon carbide (Q12) Seat: Silicon carbide (Q1)

Bellows: Inconel® 718 hardened (M6), Hastelloy® C-276 (M5)

Metal parts: CrNiMo steel (G), Duplex (G1), Hastelloy® C-4 (M)

Stationary Seats



G16

(l1k shorter than specified by EN 12756)

Design Variations

SFL900N

Shaft diameter: d1= Upto 100 mm
(Upto 4.000'')

Internally pressurized: p1 = ... 16 bar
(232 PSI), stationary seat lock necessary.

Externally pressurized: p1 = 10 bar
(145 PSI)

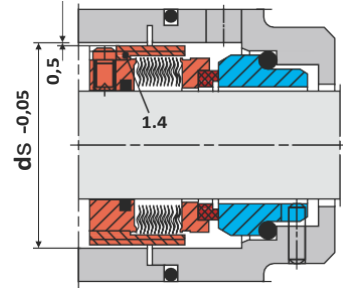
Temperature: t = -40 °C .. +220 °C (-40
°F +428 °F)

Sliding velocity: vg = 20 m/s (66 ft/s)

Version with pumping ring. Dependent on
direction of rotation. Can be retrofitted.

SFL850F

Dimensions, items and description as for
SFL850N, but with pumping screw (item
no. 1.4). Dependent on direction of rotation.
The pumping screw can be retrofitted.



Dimensional Data

Dimensions in millimeter

d ₁	d ₃	d ₆	d ₇	d ₈	d _s	l _{1K}	l ₃	l ₅	l ₆	l ₈	l ₉	l ₁₈	l ₁₉	b	S
16	30	23	27	3	38	42.5*	32.5	1.5	4	17.5	10	-	-	1.6	9.0
18	32	27	33	3	39	42	30.5	2	5	14	11.5	15	7.0	1.6	10.0
20	33.5	29	35	3	41	42	30.5	2	5	14	11.5	15	7.0	1.6	10.0
22	36.5	31	37	3	44	42	30.5	2	5	14	11.5	15	7.0	1.6	10.0
24	39	33	39	3	47	40	28.5	2	5	19.5	11.5	15	7.0	1.6	8.2
25	39.6	34	40	3	48	40	28.5	2	5	19.5	11.5	15	7.0	1.6	8.5
28	42.8	37	43	3	51	42.5	31	2	5	19.5	11.5	15	7.0	1.6	9.0
30	45	39	45	3	53	42.5	31	2	5	19.5	11.5	15	7.0	1.6	8.5
32	46	42	48	3	55	42.5	31	2	5	19.5	11.5	15	7.0	1.6	9.2
33	48	42	48	3	56	42.5	31	2	5	19.5	11.5	15	7.0	1.6	9.2
35	49.2	44	50	3	58	42.5	31	2	5	19.5	11.5	15	7.0	1.6	9.5
38	52.3	49	56	4	61	45	31	2	6	22	14	16	8.0	1.6	9.2
40	55.5	51	58	4	64	45	31	2	6	22	14	16	8.0	1.6	9.2
43	57.5	54	61	4	67	45	31	2	6	22	14	16	8.0	1.6	9.2
45	58.7	56	63	4	69	45	31	2	6	22	14	16	8.0	1.6	9.5
48	61.9	59	66	4	72	45	31	2	6	22	14	16	8.0	1.6	9.2
50	65	62	70	4	74	47.5	32.5	2.5	6	23	15	17	9.5	1.6	10.5
53	68.2	65	73	4	77	47.5	32.5	2.5	6	23	15	17	9.5	1.6	10.5
55	70	67	75	4	80	47.5	32.5	2.5	6	23	15	17	9.5	1.6	10.0
58	71.7	70	78	4	83	52.5	37.5	2.5	6	23	15	18	10.5	3.0	14.0
60	74.6	72	80	4	85	52.5	37.5	2.5	6	23	15	18	10.5	3.0	14.0
63	79	75	83	4	88	52.5	37.5	2.5	6	23	15	18	10.5	3.0	14.0
65	84.1	77	85	4	95	52.5	37.5	2.5	6	23	15	18	10.5	3.0	14.0
68	87.3	81	90	4	96	52.5	34.5	2.5	7	26	18	18.5	11.0	1.6	10.0
70	87.3	83	92	4	96	60	42	2.5	7	26	18	19	11.5	3.0	17.0
75	95	88	97	4	104	60	42	2.5	7	26	18	19	11.5	3.0	16.0
80	98.4	95	105	4	109	60	41.8	3	7	26.2	18.2	19	11.5	3.0	16.0
85	104.7	100	110	4	114	60	41.8	3	7	26.2	18.2	19	11.5	3.0	16.0
90	111	105	115	4	119	65	46.8	3	7	26.2	18.2	20.5	13.0	3.0	21.0
95	114	110	120	4	124	65	47.8	3	7	25.2	17.2	20.5	13.0	3.0	21.0
100	117.4	115	125	4	129	65	47.8	3	7	25.2	17.2	20.5	13.0	3.0	20.0

* Installation length is longer than l_{1k} specified by EN 1275

inch size available from size 0.625 to 4.000

Note: Additional technical & dimensional information will be provided on request.