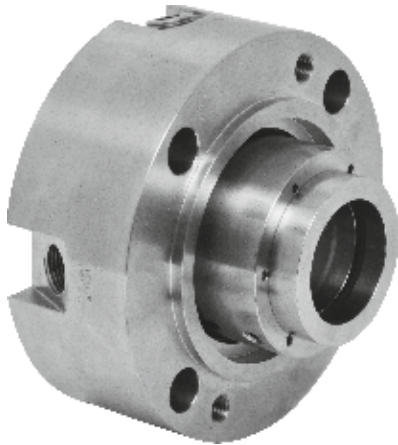


P750VN

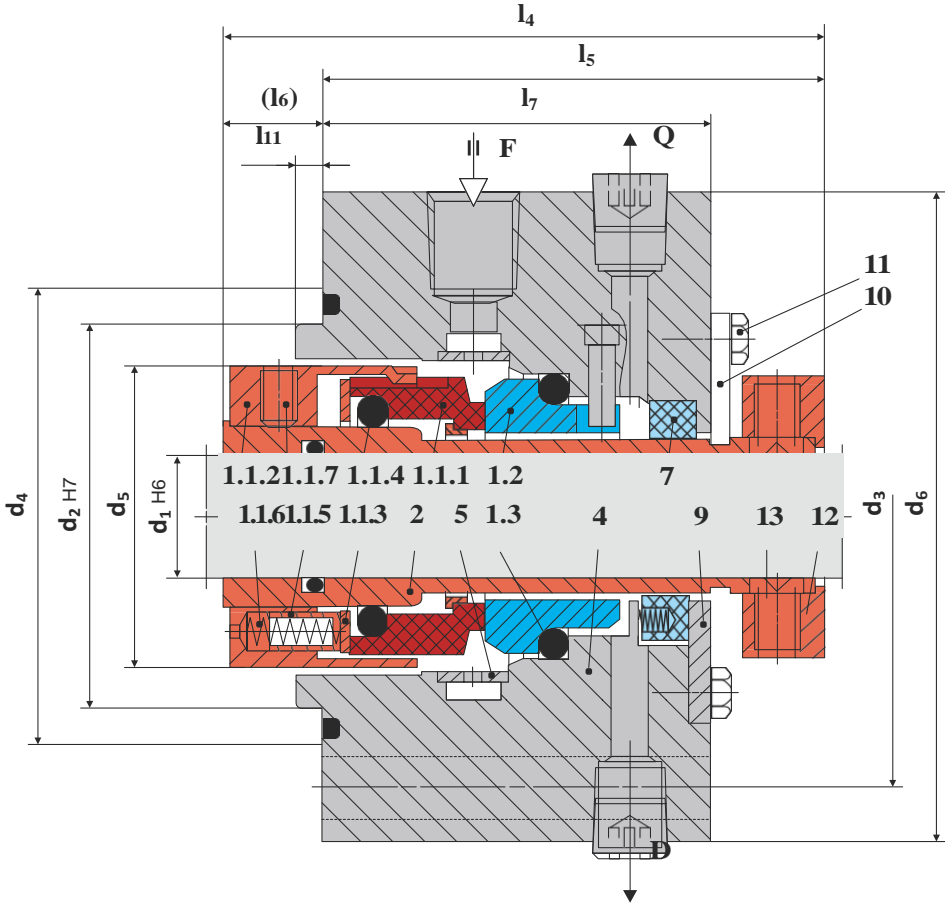


Description

Cartridge unit
 Category 2 and 3, Type A,
 Arrangement 1
 Design acc. to API 682 / ISO 21049
 Independent of direction of rotation
 Integrated pumping device available
 (P750VP)
 Rotating multiple springs
 Single seal

Technical Features

"Low-Emission-Seal" acc. to the American
 STLE-limits
 Extended field of operation in terms of
 temperature and pressure Fits to
 any seal chamber
 Metal parts also in special materials
 available



Item	Description
1.1.1	Seal face
1.1.2	Driver
1.1.3	Thrust ring
1.1.4, 1.3	O-Ring
1.1.5	Sleeve
1.1.6	Spring
1.1.7	Set screw
1.2	Seat

Item	Description
2	Shaft sleeve
4	Housing
5	Insert
7	Throttle ring
9	Washer
10	Assembly fixture
11	Hexagon bolt
12	Set ring
13	Set screw

Typical Industrial Applications

Light hydrocarbons Oil
and gas industry
Petrochemical industry
Refining technology
API 610 / ISO 13709 pumps
Process pumps

Performance Capabilities

Sizes: d = Upto 110 mm (Upto 4.250")*
Pressure: p1 = 40 bar (580 PSI)
Temperature: t = -40 °C ... +220 °C (-0
°F... 428 °F)
Speed = 23 m/s (75 ft/s)
Permissible axial movement: ± 2.0 ...
4.0 mm depending on diameter and
installation situation

Standards

API 682 / ISO 21049

Materials

Seal face: Carbon graphite antimony
impregnated (A)
Seat: Silicon carbide (Q1, Q2) Secondary
seals: EPDM (E), NBR (P), FKM
(V), FFKM (K)
Springs: Hastelloy® C-4 (M)
Metal parts: CrNiMo steel (G), Duplex
(G1), Hastelloy® C-4 (M)

Design Variations**P750VP**

Dimensions, items and descriptions as
P750VN, but with pumping ring. Shorter
installation length possible.

P750N

Dimensions, items and description as
P750VN.
Seal face: Silicon carbide (Q1, Q2)
Seat: Silicon carbide (Q1, Q2)

Dimensional Data**Dimensions in inch**

API/d ₁	API/d ₂	API/d ₃	API/d ₄	d ₅	d ₆	l ₄	l ₅	l ₆	l ₇	l ₁₁	Overall length
0.750	2.756	4.134	3.346	1.969	5.433	3.740	3.701	0.039	2.992	0.236	3.937
1.125	3.150	4.528	3.740	2.441	5.827	3.957	3.858	0.098	3.031	0.236	4.094
1.500	3.543	4.921	4.134	2.835	6.220	4.154	3.878	0.276	3.051	0.236	4.921
2.000	3.937	5.512	4.528	3.386	6.614	4.390	3.917	0.472	3.091	0.236	5.512
2.250	4.724	6.299	5.315	3.898	7.402	4.744	4.016	0.728	3.189	0.236	6.299
2.750	5.118	6.693	5.709	4.291	7.795	4.902	4.173	0.709	3.189	0.236	6.693
3.125	5.512	7.087	6.102	4.685	8.189	5.079	4.173	0.906	3.189	0.236	7.087
3.500	6.299	8.071	6.890	5.079	9.370	5.079	4.173	0.906	3.189	0.236	8.071
3.750	6.693	8.465	7.283	6.024	9.764	5.236	4.291	0.945	3.189	0.236	8.465
4.250	7.087	8.858	7.677	6.614	10.157	5.236	4.291	0.945	3.189	0.236	8.858

Dimensions in millimeter

API/d ₁	API/d ₂	API/d ₃	API/d ₄	d ₅	d ₆	l ₄	l ₅	l ₆	l ₇	l ₁₁	Overall length
20	70	105	85	50	138	95.0	94.0	1.0	76.0	6	100
30	80	115	95	62	148	100.5	98.0	2.5	77.0	6	104
40	90	125	105	72	158	105.5	98.5	7.0	77.5	6	125
50	100	140	115	86	168	111.5	99.5	12.0	78.5	6	140
60	120	160	135	99	188	120.5	102.0	18.5	81.0	6	160
70	130	170	145	109	198	124.5	106.0	18.0	81.0	6	170
80	140	180	155	119	208	129.0	106.0	23.0	81.0	6	180
90	160	205	175	129	238	129.0	106.0	23.0	81.0	6	205
100	170	215	185	153	248	133.0	109.0	24.0	81.0	6	215
110	180	225	195	168	258	133.0	109.0	24.0	81.0	6	225

Note: Additional technical & dimensional information will be provided on request.