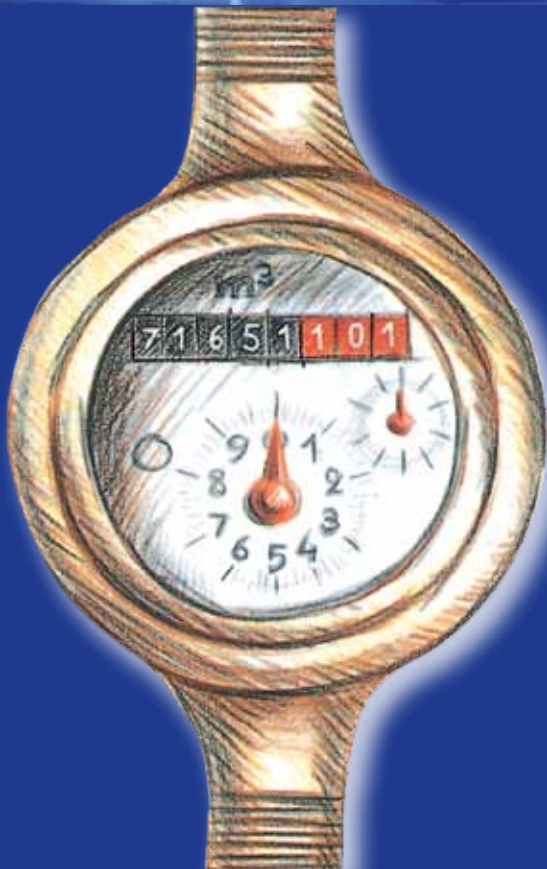


*Toshniwal*

# WATER METERS



**DOMESTIC WATER METERS**



**BULK WATER METERS**



**REMOTE READING**



**BUILD MANAGEMENT SYSTEM (BMS)**



## Dry dial multijet water meter

### Main Characteristics

---

- DN 15 to 40 PN 16
- Magnetic transmission
- Maximum water temperature 40°C
- 355° orientable register
- High resistance to water impurities
- In option it may be equipped with a removable bonnet for quick and easy maintenance
- Equipable with an HRI Sensor

## Hydraulic Sensor for hot water up to 130°C, PN 16 and PN 25

### Special Features

---

- Fully dry meter with no gear reduction in the wet chamber
- Wear resistant tungsten carbide / sapphire bearing
- Magnetic coupling protected against magnetite
- Pulse sender safe from interference
- Easy to repair construction with external regulation



## WP-Dynamic DN 40... DN 400

---

- Hydrodynamically balanced rotor
- For horizontal, vertical and inclined pipes
- Hermetically sealed register (IP 68)
- Negligible head loss
- Equipped for pulser connection
- Powder coated body protection

## Meitwin, WPVD 150 DN 50... DN 100

---

- Three in one measuring element
- One measuring unit adjusted and verified for DN 50, 80 and 100
- Main meter and By-pass meter placed in a row
- Main meter with hydro-dynamic balanced rotor
- Hermetically sealed registers (IP 68)



## Turbine Water Meter for hot water up to 130°C DN 40... DN 300



### Special Features

---

- Patented hydrodynamically balanced rotor
- Patented symmetrical calibration adjustment
- Hermetically sealed register (IP68)
- Register may be rotated through 360°
- High overload capability
- Pattern approved removable measuring element
- Up to 3 pulsers (1 x OD, 2 x RD) may be fitted without breaking the approval seal
- Powder coating ensures maximum corrosion protection
- Hot water meters pressure rate PN 40 please see special leaflet
- Special version available for 180°C / 200°C

## Bulkmeter for cold potable water Miestream Series DN 40... DN 150

### Main Characteristics

---

- Meter with MID pattern approval (acc. to annex MI001)
- Pattern approved removable measuring insert (75/33/EEC)
- Unique measuring range
- High overload capability
- No straight inlet length necessary (acc. to OIML R49 and EN 14154)
- Unlimited fitting position
- Meter body in short (WP) and long (WS) overall length (acc. to DIN 19625 and EN 14154 available)
- Measuring insert fits the meter body of WP-Dynamic
- Used materials are temperature resistant up to 70°C
- Register prepared for HRI-Mei pick-up
- Use of optical pulsers type OD is still possible



### Applications

---

- Measurement for billing of cold potable water up to 50°C
- Measurement of high flow rates (e.g. in pumped pipes)
- Measurement of low flow (e.g. in light load periods)
- For leakage control



## REMOTE READING

### The data interface and flexible pulse output for Bulk Water Meters

#### Special Features



- Compatible to bulk water meters with Meistream register
- Load-free inductive scanning of the meter's pointer
- No magnetic influence
- Retrofitable
- Detection of water flow direction
- Electronic pulse output means no switch bouncing
- Pulse-weight, mode and length can be changed on site
- Self diagnostic and tamper detection
- Battery lifetime up to 12 years. With external power supply (i.e. a M-Bus central unit lifetime can be expanded)
- Sealed housing (IP68)



## BUILD MANAGEMENT SYSTEM



For further details please contact:

## TOSHNIWAL HYVAC PVT. LTD.

<b>CHENNAI</b>	:	267 Kilpauk Garden Road Chennai - 600 010, India	Tel: +91(0)44 26448983 / 8558
			Fax: 044 - 26441820 / Email: sales@toshniwal.net / Web: www.toshniwal.net
<b>BANGALORE</b>	:	Tel: +91(0)80 23549620	Email: bangalore@toshniwal.net
<b>DELHI</b>	:	Tel: +91(0)11 26211134	Email: delhi@toshniwal.net
<b>HYDERABAD</b>	:	Tel: +91(0)40 23321631	Email: hyderabad@toshniwal.net
<b>KOLKATA</b>	:	Tel: +91(0)33 24740989	Email: kolkata@toshniwal.net
<b>MUMBAI</b>	:	Tel: +91(0)22 26591166	Email: mumbai@toshniwal.net
<b>VADODARA</b>	:	Tel: +91(0)265 2987538	Email: baroda@toshniwal.net