

Specifications/

KE-430FX II-0



Application
1 Light materials
3 Medium materials
5 Heavy materials
K Knitted materials

BE-438FX II



KE-430FX II	01	03	05	OK	BE-438FX II
Application	Light materials	Medium materials	Heavy materials	Knitted materials	Button attaching
Lubrication	Semi-dry				
Max. sewing speed	3,200st/min				
Sewing area	Max.40×30mm				
Dimensions of buttons that can be Sewn	—				
Stitch length	0.05~12.1mm				
Feed mechanism	V-G intermittent feed mechanism (pulse-motor driven mechanism)				
No. of stitches	Variable (Refer to "Program List" for details on the number of stitches for sewing patterns that are already preset.)				
Max. No. of stitches	5,000 stitches/pattern				
Work clamp lifter	Pulse motor drive system				
Work clamp height / Button clamp height	Max. 17mm				
Rotary hook	Shuttle hook (double shuttle hook optional)				
Digital tension	Standard equipment				
Thread wiper	Standard equipment				
Thread trimmer	Standard equipment				
Thread nipper	-01~-03~-0K Standard equipment (-05 Option)				
Data storage method	Flash memory (Any sewing pattern can be added using SD card*)				
External data storage method	SD card*2				
No. of cycle programs	30 cycle (S) programs for each cycle				
No. of stored data	83 sewing patterns are set already (Up to 612 patterns can be added, total number of stitches of stored data which can be added is within 500,000.*3)				
Motor	AC servo motor 550W (Direct Drive)				
Weight	Machine head: Approx. 57kg, Operation panel: Approx.0.4kg, Control box: Approx. 8kg				
Power supply	Single-phase 100V/20V, 5-phase 220V/380V/400V/400VA (For single-phase 100V and 5-phase 380V/400V, the lens box is required.)				

*1: Use the optional button clamp L (S0503101) for diameters of 20 mm or greater.

*2: The number of stored patterns and the number of stitches that can be recalled will vary depending on the number of stitches in each sewing pattern.

*3: The number of sewing patterns and the number of stitches that can be recalled will vary depending on the number of stitches in each sewing pattern.



RoHS Compliant

KE-430FX II and BE-438FX II are compliant with the RoHS Directives in addition to the use of such hazardous substances in electrical and electronic equipment which came into effect in the EU in July 2006.

Please read instruction manual before using the machine for safety operations.

-Product specifications are subject to change for improvement without notice.

-Photographs are for illustration purpose. They may not represent actual operating conditions and may display optional parts.



Brother has established voluntary environmental objectives for products and created the "Brother Green Label" (E-53000 and E-43800) line certified as an environment-conscious sewing machine according to the "Brother Green Label" standard.

Works with you for a better environment.
www.brotherearth.com

CHINA
ASIA
EUROPE AFRICA, MIDDLE EAST
AMERICAS

BROTHER MACHINERY SHANGHAI LTD.
BROTHER MACHINERY (ASIA) LTD.
BROTHER INTERNATIONALE INDUSTRIEMASCHINEN GmbH
BROTHER INTERNATIONAL CORPORATION

+86-21-51135-3355
+852-2777-0010
http://www.brother.com/hk/
http://www.brother-sam.com/ +49-2822-6090
http://www.brother-usa.com/ +1-908-704-1700

brother
BROTHER INDUSTRIES, LTD.

1-5, Kojiyozsaka, Noda-shi, Chiba-ken, Japan.
Phone: 81-598-91-0088 Fax: 81-598-91-0721 http://www.brother.com/

2015.7/06/11/02 V.1.1

brother
at your side

KE-430FX II

Electronic direct drive lockstitch bar tacker (Short remaining thread spec.)

BE-438FX II

Electronic direct drive lockstitch button sewer (Short remaining thread spec.)

Stable thread tightening and thread trimmer when sewing from light materials to medium materials and heavy materials. They minimize the disposition of thread ends.

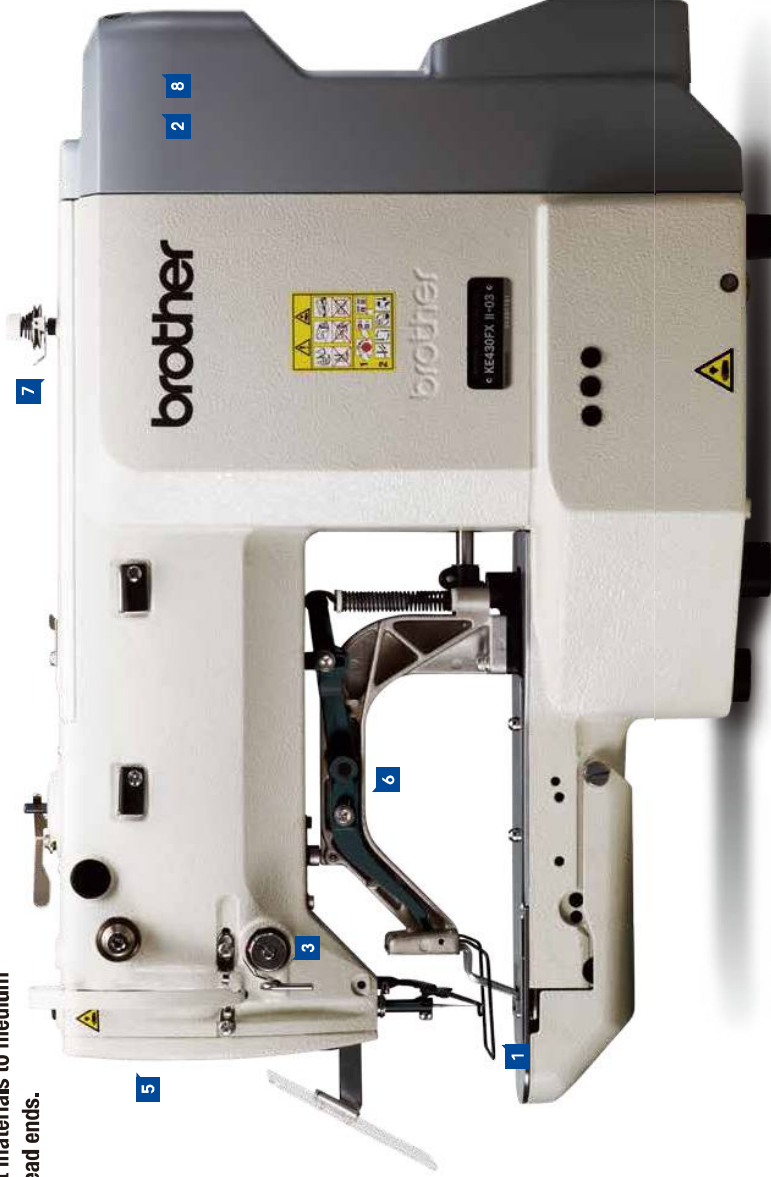
- Reduction of disposition of threads ends (short remaining thread)
- Sew-capability enhancement
- Overwhelmingly superior productivity with the world's top-class cycle time
- Digital Tension and Quick Change Device as standard equipment
- Clean sewing with semi-dry type



Quality & Speed

Quality & Speed

Stable thread tightening and thread trimmer when sewing from light materials to medium materials and heavy materials. They minimize the disposition of thread ends.

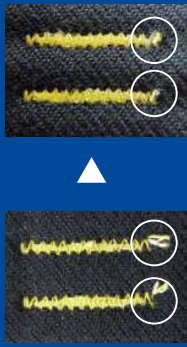


1 Reduction of Disposition of Thread Ends and Enhanced Sewing Capability can Improve the Quality

Reduction of Disposition of Thread Ends (Short Remaining Thread)

Renewed thread trimmer cuts the thread, realizing short remaining threads. The disposition of thread ends after sewing can be reduced. Also, the thread nipper, equipped as standard*, minimizes thread cast off at sewing start and bird's nest.

*-5 spec.(heavy materials) is not included.



Enhanced Sew-capability for Medium Materials

The brand new thread take-up stroke provides stable thread tightening. So that medium material specification covers heavy material usage.

2 Overwhelmingly Superior Productivity with The World's Top-class Cycle Time

Since a direct drive system is used, the KE-430FX II boasts the world's top-class sewing speed* 3,200st/min in half shuttle hook sewing machines. Since the work clamp lift amount can be set in two steps, it contributes to enhanced productivity.

*2,700st/min for BE-430FX II

3 Digital Tension as Standard Equipment

Digital Tension is equipped as standard so you can adjust the tension appropriately for the material being sewn. No more relying on individual feel, changing the thread tension can be added onto the sewing programs.



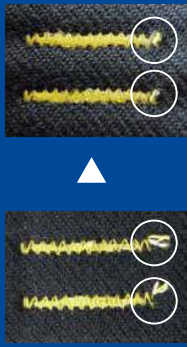
5

1 Reduction of Disposition of Thread Ends and Enhanced Sewing Capability can Improve the Quality

Reduction of Disposition of Thread Ends (Short Remaining Thread)

Renewed thread trimmer cuts the thread, realizing short remaining threads. The disposition of thread ends after sewing can be reduced. Also, the thread nipper, equipped as standard*, minimizes thread cast off at sewing start and bird's nest.

*-5 spec.(heavy materials) is not included.



Enhanced Sew-capability for Medium Materials

The brand new thread take-up stroke provides stable thread tightening. So that medium material specification covers heavy material usage.

2 Overwhelmingly Superior Productivity with The World's Top-class Cycle Time

Since a direct drive system is used, the KE-430FX II boasts the world's top-class sewing speed* 3,200st/min in half shuttle hook sewing machines. Since the work clamp lift amount can be set in two steps, it contributes to enhanced productivity.

*2,700st/min for BE-430FX II

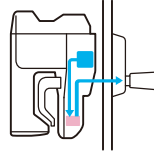
3 Digital Tension as Standard Equipment

Digital Tension is equipped as standard so you can adjust the tension appropriately for the material being sewn. No more relying on individual feel, changing the thread tension can be added onto the sewing programs.



5 Clean Sewing with Semi-dry Type

All bar tacker and button attaching models are semi-dry type. They supply constant clean oil only to the shuttle hook, there is no concern of oil staining. The direct drive system, having no belt shavings can keep products clean.



6 Easy Work Clamp Change

The work clamp can be easily replaced by loosening the bolt and moving the work clamp arm levers.

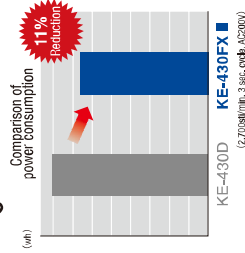


7 Easy Maintenance

The KE-430FX II provides an easy maintenance, thanks to its long life cycle of the grease.

8 High Energy Saving

New Brother-developed motor realizes high energy saving with direct drive system which minimizes loss of power transmission. It exercises strong sewing with less energy.



4 User-friendly Operation Panel

The operation panel is designed to be user-friendly and to improve the ease of operation. Sewing patterns, sewing speed and upper thread tension can be memorized as user programs. Other useful functions such as production counter and lower thread counter are available.



SD card slot
Sewing patterns can be added and copied as well.