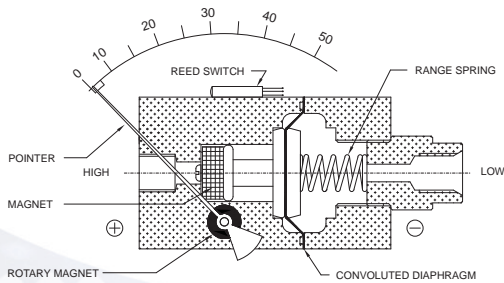


CRYOGENIC TANK LEVEL INSTRUMENT



ΔP Range : 0 to 0.075 upto 4 bar
0 to 1 upto 60 psi

COMBINATIONS

Gauge in SS case



Gauge with SS flange



Gauge with engg. polymer case

2.5" (SD)



4.5" (RD)

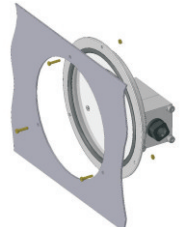


6" (LD)



MOUNTING

Panel mounting



Pipe mounting



700DGC

Specifications

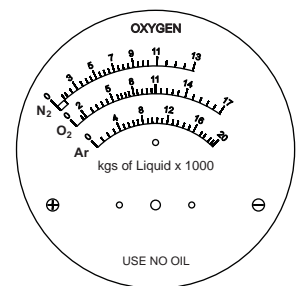
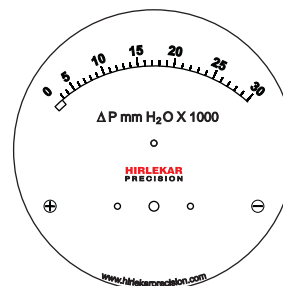
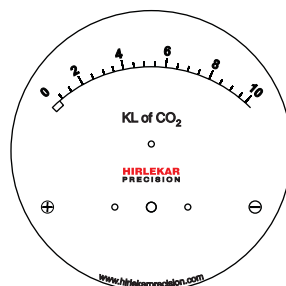
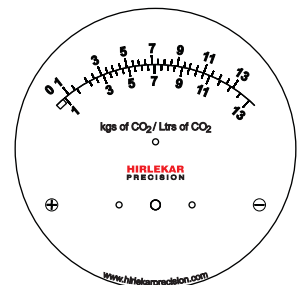
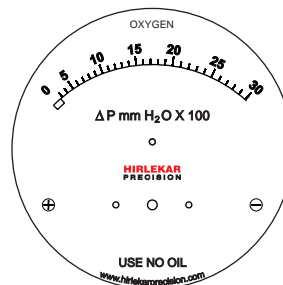
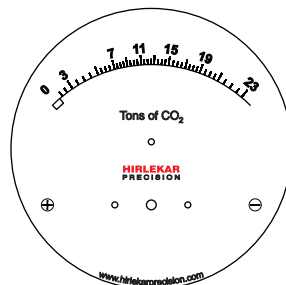
Accuracy	±2% of the FSD (Ascending)
Migration	No migration ; Zero leakage from high to low port
Range	0-0.075 to 0-4 bar or equivalent ranges in other units
First marking on the scale	15% of the FSD
Sensing element	Diaphragm
Wetted parts	Diaphragm, body material, SS 302 spring & ceramic magnet
Case material / Dial size	Stainless steel (SS 304) 2.5", 3.5", 4", 4.5", 6" Engineering polymer 2.5" (SD), 4.5" (RD), 6" (LD)
Mounting	Direct, front flange, 2" pipe & surface mounting
Maximum working pressure	100 bar / 1500 psi
Maximum process temperature	80°C / 175°F
Body material	Aluminum, Brass, SS 316 & Monel
Seals	Buna-N, Viton, EPDM diaphragm & 'O' rings
Window	Float glass (Std.), toughened glass, acrylic & safety glass
Connection	1/4" NPT (F) Std. Optional 1/4" BSP (F) with adaptor
Porting	In-line, rear, bottom, bottom & vent, in-line & vent, in-line & bottom.
Over range protection	Up to the max. working pressure from high side
Protection for gauge & switch	IP 65 / NEMA-4

Options

Liquid filling	1 or 2 SPSTs with a DIN plug
Red follower pointer (except 6" (only with acrylic glass)	1 or 2 SPSTs with terminal strip
Customer logo	1 SPST with a built in relay
Dual scale	1 or 2 SPDTs with a terminal strip
Colour band	1 or 2 SPDTs with a DIN plug
Filter mesh in (+) connection	
Descending calibration	

Switches (Adjustable in 30 - 100% of FSD)

1 or 2 SPSTs with a DIN plug
1 or 2 SPSTs with terminal strip
1 SPST with a built in relay
1 or 2 SPDTs with a terminal strip
1 or 2 SPDTs with a DIN plug





SELECT MODEL

- 1 Series** **700 DGC**
- 2 Type** G Gauge S Switch
GS Gauge + Switch
- 3 Body material** A Aluminum S SS-316
B Brass M Monel
- 4 Dial size** 2.5 2.5" (63 mm) 4.5 4.5" (115 mm)
3.5 3.5" (80 mm) 6.0 6.0" (150 mm)
4.0 4.0" (100 mm)
- 5 Connection** 4N 1/4" NPT (F) (Std.) 4B 1/4" BSP (F)
ZZ Special connection sizes using adaptor
- 6 Porting** 1 In-line (Std.) 5 In-line & vent
2 Rear / Back 6 In-line & bottom
3 Bottom **7 Bottom vent & in-line**
4 Bottom & vent
- 7 Case** **S4 SS 304 (Std.)** **S6 SS 316**
F4 SS 304 flange
EP Engineering polymer (available in 2.5", 4.5", 6.0" only)
BF Bayonet (available in 4.0" safety glass only)
- 8 Window** F Glass (Std.) A Acrylic
T Toughened glass L Safety glass
- 9 Seals/Diaphragm** B Buna-N (Std.) E EPDM
V Viton

Advantages :
 Instrument automatically resets after line surges and cold start.
 This eliminates balancing of differential pressure instrument after such events.

- Notes**
- Top vent not available with switch option.
 - For SS 316 case, please contact factory (MOQ applies).
 - Liquid filling + Follower pointer available.
 - Switch adjustment range between 30-100% of full scale deflection (FSD). For specific details, please contact factory.
 - **We can supply gauge with kgs of liquid / Liters of liquid (tank drawing required).**
 - Mounting bracket: Aluminum (Standard) ; SS (Optional)

10 Switch

Select option & specifications

0	None
1	One SPST, with a DIN plug †
2	One SPST, with a terminal strip
2A	One SPST, with built in relay
3	Two SPSTs, with a DIN plug †
4	Two SPSTs, with a terminal strip

+

SPST Specifications (AC/DC max)

1 Standard	2	3	4
10 VA	40 VA	100 VA	60 VA
100 V	230 V	300 V	240 V
0.5 Amp	1 Amp	1 Amp	3 Amp
Adjustable	Adjustable	Adjustable	Adjustable

5	One SPDT, with a DIN plug †
6	One SPDT, with a terminal strip
7	Two SPDTs, with two DIN plugs
8	Two SPDTs, with a terminal strip

+

SPDT Specifications (AC/DC max)

1 Standard	2	3	4
3 VA	5 VA	5 VA	60 VA
30 V	125 V	175 V	400 V
0,3 Amp	0,25 Amp	0,25 Amp	1 Amp
Adjustable	Adjustable	Adjustable	Factory Set

Example: Switch selection 21 is 1 SPST with terminal strip with switch specifications 10VA, 100V, 0.5Amp

† DIN plug mounted on the top.

11 Range

Standard ranges : (Other ranges & units on request)

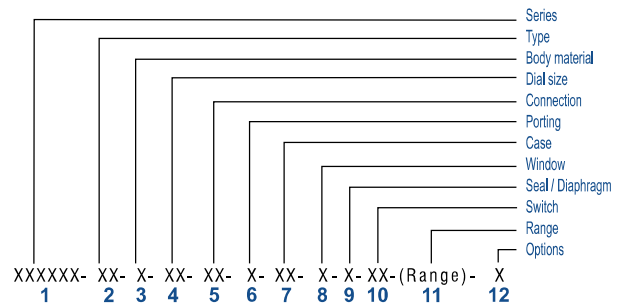
mmH₂O	750	1200	1500	1800	2000	2500	5000	7500	10000	12000	16000	20000
inch H₂O	30	50	60	70	80	100	200	300	400	500	600	800

12 Options

- 0 None
- A Glycerine*
- B Red follower pointer on acrylic window *
- C Customer Logo
- D Dual scale
- E Colour band
- F Filter mesh in (+) connection
- G Reverse Port**
- H Descending calibration (long delivery time)
- N NACE
- S Silicone oil*
- I Oxygen service (Contact factory)
- P DIN plug at back on plastic switch cover
- M1 2" horizontal pipe mounting bracket
- M2 Surface mounting bracket
- M3 2" vertical pipe mounting bracket
- Q Metallic switch cover with tamper proof plastic plugs *****

* Affects accuracy
 ** Pointer moves from right to left
 *** Minimum order quantity applies

Ordering code sequence



Contact factory for special execution.