

Akron Make

FCG Make



**EX-200 DPG, EX-200 DGR, EX-300 DGC, EX-400 DGC,** DP Range : 0 to 20 mbar upto 10 bar  
0 to 1 upto 150 psi

**Specifications**

Accuracy	±2% of the FSD (Ascending)
Migration	As per the model selected
Range	As per the model selected
First marking on the scale	15 or 20% of the FSD, depending on the model selected
Sensing element	As per the model selected
Wetted parts	As per the model selected
Case material	Stainless steel (SS 304)
Dial size in inch /mm	3.5", 4", 4.5", 6" / 80, 100, 115, 150 mm
Mounting	As per the explosion proof box drawings
Maximum working pressure	As per the model selected
Maximum process temperature	80°C / 175° F
Body material	Aluminum, Brass & SS 316
Seals	Buna-N, Viton, EPDM diaphragm & 'O' rings
Window	Float glass(Std.), toughened glass, acrylic & safety glass.
Connection	As per the model selected
Porting	Bottom (right side) & back
Over range protection	As per the model selected
Protection for gauge & switch	IP 65 / NEMA-4

**Options**

**Switches(As per model selected)**

Customer logo	1 or 2 SPSTs with a terminal strip
Dual scale	1 or 2 SPDTs with a terminal strip
Colour band	

**COMBINATIONS**

**Gauge+switch**  
(with a terminal strip inside)



**Switch**



**Gauge+switch**  
(without Ex-proof enclosure)



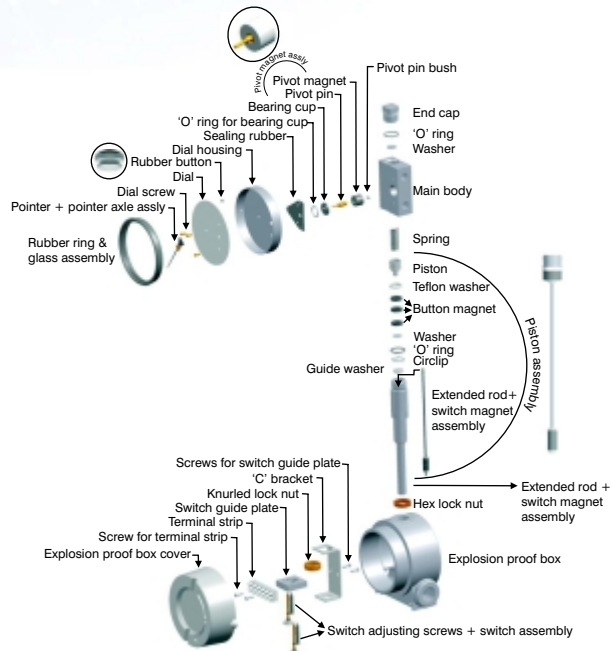
**Switch\***  
(without Ex-proof enclosure)



\* Locally available Explosion proof enclosure can be used.

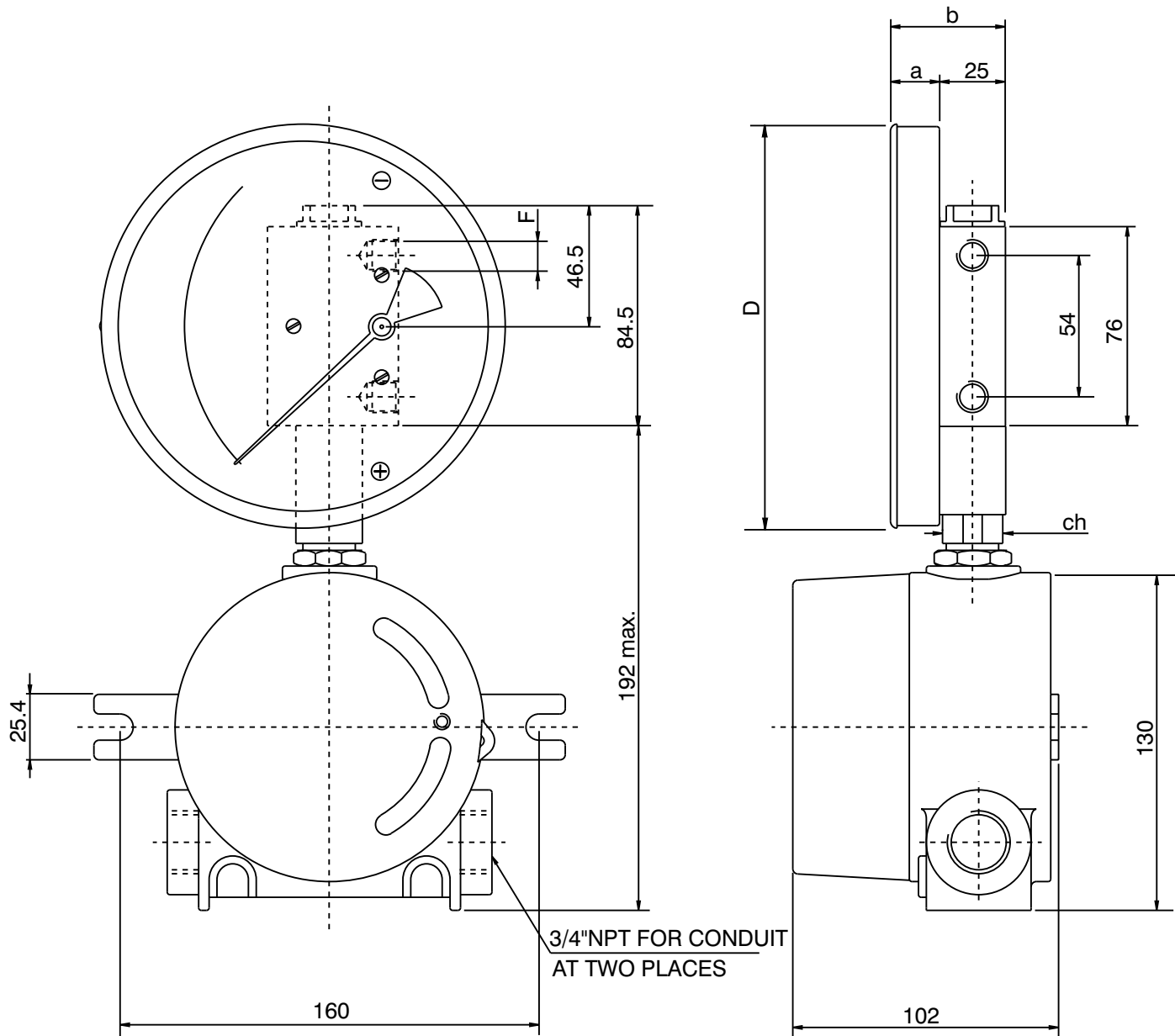
**MOUNTING BRACKETS**

**Gauge+switch**  
(2" pipe mounting )



Ex-proof enclosure make	Certification	Electrical connection	Mounting
<b>Akron Electric USA</b>	UL, CSA, FM, CENELEC, KEMA / ATEX approved. Compliance to EN 50 014:1971+A1...A5 and EN 50 018: 1977+A1...A3. Ref: UL:E139669 / CSA:LR86146-5 KEMA: 03ATEX2460 U 0539 Ex II 2G EEx d II C	2 X 3/4" NPTF conduit ports on either side as shown	Two slots provided suitable for M6 / 1/4" UNC screw.
<b>FCG India</b>	Compliance to EN 50014: 1977 + A1:1999+A2:1999 and EN 50281-1-1:1998 + A1:2002 Ref: DNV-2006-OSL-ATEX-0075 / Ex II 2 GD EEx d IIC T6	3 X 3/4" ET conduit ports as shown.	Two elliptical holes provided suitable for M6 / 1/4"UNC screw.

## STANDARD DIMENSIONS FOR EXPLOSION PROOF INSTRUMENT (MODEL EX 200 DPG)



DIAL Ø	F	a	b	d	ch
80 (3.5")	1/4" BSP - 1/4" NPT	19	44	83.0	22
100 (4.0")	1/4" BSP - 1/4" NPT	19	44	104.3	22
115 (4.5")	1/4" BSP - 1/4" NPT	19	44	119.7	22
150 (6.0")	1/4" BSP - 1/4" NPT	19	44	154.3	22

Authorised Dealer



*NK Instruments Pvt. Ltd.*

B-501/504, 5th floor, Raunak Arcade, Near THC Hospital, Gokhale Road, Naupada,  
Thane(W) 400602. Maharashtra INDIA      Telefax Nos.: 91-22-25301330 / 31 / 32  
E-Mail: sales@nkinstruments.com      Web: http://www.nkinstruments.com  
Skype: nitinkelkarskype      Gtalk: nkinstruments2006



# How to order EX 200DGR

## SELECT MODEL

<b>1 Series</b>	<b>EX 200DGR</b>			
<b>2 Type</b>	GS Gauge + Switch	S Switch		
<b>3 Body material</b>	A Aluminum	B Brass		
	S SS-316	M Monel		
<b>4 Dial size</b>	2.5 2.5" (63 mm)	4.5 4.5" (115 mm)		
	3.5 3.5" (80 mm)	6.0 6.0" (150 mm)		
	4.0 4.0" (100 mm)			
<b>5 Connection</b>	4N 1/4" NPT (F) (Std.)	4B 1/4" BSP (F) (MOQ)		
	ZZ Special connection sizes using adaptor			
<b>6 Porting</b>	3 Bottom (Right side)	2 Back		
<b>7 Case</b>	S4 SS 304 (Std.)	S6 SS 316		
	F4 SS 304 flange			
	EP Engineering polymer (available in 2.5", 4.5", 6" only)			
<b>8 Window</b>	F Glass (Std.)	A Acrylic		
	T Toughened glass	L Safety glass		
<b>9 Seals/Diaphragm</b>	B Buna-N (Std.)	E EPDM		
	V Viton			
<b>10 Switch</b>	Select option & Specifications			

**Advantages :**  
Instrument automatically resets after line surges and cold start.  
This eliminates balancing of differential pressure instrument after such events.

- Notes**
- Both enclosures have provision for surface mounting.
  - For SS 316 case, please contact factory (MOQ applies).
  - Liquid filling + Follower pointer available.
  - Switch adjustment range between 30-100% of full scale deflection (FSD). For specific details, please contact factory.
  - Minimum Order Quantity (MOQ) applies for 6.0" (150mm) dial.
  - For electrical connection details, please refer to the datasheet.
  - Mounting bracket: Aluminum (Standard) ; SS (Optional)

0	None
2	One SPST, with a terminal strip
4	Two SPSTs, with a terminal strip

+

1 Standard	2	3	4
10 VA	40 VA	100 VA	60 VA
100 V	230 V	300 V	240 V
0.5 Amp	1 Amp	1 Amp	3 Amp
Adjustable	Adjustable	Adjustable	Adjustable

6	One SPDT, with a terminal strip
8	Two SPDTs, with a terminal strip

+

1 Standard	2	3	4
3 VA	5 VA	5 VA	60 VA
30 V	125 V	175 V	400 V
0.3 Amp	0.25 Amp	0.25 Amp	1 Amp
Adjustable	Adjustable	Adjustable	Factory Set

**Example:** Switch selection 21 is 1 SPST with terminal strip with switch specifications 10VA, 100V, 0.5Amp

## 11 Range

Standard ranges : (Other ranges & units on request)

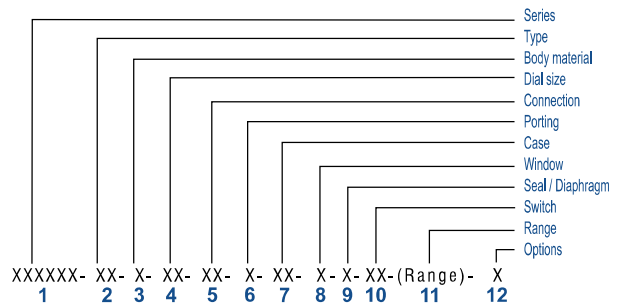
Kg/cm <sup>2</sup>	0.25	-	0.5	0.75	1	-	2	2.5	-	4	7
bar	0.25	-	0.5	0.75	1	-	2	2.5	-	4	7
mbar	250	-	-	750	-	-	-	-	-	-	-
psi	-	5	7	-	15	25	30	-	40	60	100
kPa	25	-	50	75	100	-	200	250	-	400	700

## 12 Options

- 0 None
- A Glycerine \*
- B Red follower pointer on acrylic window \*
- C Customer Logo
- D Dual scale
- E Colour band
- F Filter mesh in (+) connection
- H Descending calibration (long delivery time)
- N NACE
- S Silicone oil\*
- I Oxygen service (Contact factory)
- M1 2" horizontal pipe mounting bracket
- M3 2" vertical pipe mounting bracket

\* Affects accuracy

## Ordering code sequence



Contact factory for special execution.

# How to order EX 200DPG

## SELECT MODEL

<b>1 Series</b>	<b>EX 200DPG</b>			
<b>2 Type</b>	GS Gauge + Switch	S Switch		
<b>3 Body material</b>	A Aluminum	B Brass		
	S SS-316	M Monel		
<b>4 Dial size</b>	2.5 2.5" (63 mm)	4.5 4.5" (115 mm)		
	3.5 3.5" (80 mm)	6.0 6.0" (150 mm)		
	4.0 4.0" (100 mm)			
<b>5 Connection</b>	4N 1/4" NPT (F) (Std.)	4B 1/4" BSP (F)		
	ZZ Special connection sizes using adaptor			
<b>6 Porting</b>	3 Bottom (Right side)	2 Back		
<b>7 Case</b>	S4 SS 304 (Std.)	S6 SS 316		
	F4 SS 304 flange			
	EP Engineering polymer (available in 2.5", 4.5", 6" only)			
<b>8 Window</b>	F Glass (Std.)	A Acrylic		
	T Toughened glass	L Safety glass		
<b>9 Seals/Diaphragm</b>	B Buna-N (Std.)	E EPDM		
	V Viton			

### Advantages :

Instrument automatically resets after line surges and cold start. This eliminates balancing of differential pressure instrument after such events.

### Notes

- Both enclosures have provision for surface mounting.
- For SS 316 case, please contact factory (MOQ applies).
- Liquid filling + Follower pointer available.
- Switch adjustment range between 20-100% of full scale deflection (FSD). For specific details, please contact factory.
- Minimum Order Quantity (MOQ) applies for 6.0" (150mm) dial.
- For electrical connection details, please refer to the datasheet.
- Mounting bracket: Aluminum (Standard) ; SS (Optional)

## 10 Switch

Select option & Specifications

0	None
2	One SPST, with a terminal strip
4	Two SPSTs, with a terminal strip

+

### SPST Specifications (AC/DC max)

1 Standard	2	3	4
10 VA	40 VA	100 VA	60 VA
100 V	230 V	300 V	240 V
0.5 Amp	1 Amp	1 Amp	3 Amp
Adjustable	Adjustable	Adjustable	Adjustable

New switch added

6	One SPDT, with a terminal strip
8	Two SPDTs, with a terminal strip

+

### SPDT Specifications (AC/DC max)

1 Standard	2	3	4
3 VA	5 VA	5 VA	60 VA
30 V	125 V	175 V	400 V
0.3 Amp	0.25 Amp	0.25 Amp	1 Amp
Adjustable	Adjustable	Adjustable	Factory Set

Example: Switch selection 21 is 1 SPST with terminal strip with switch specifications 10VA, 100V, 0.5Amp

## 11 Range

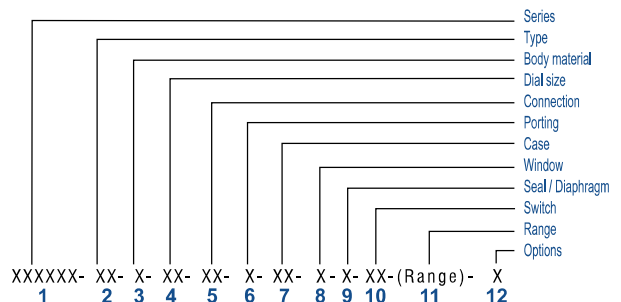
Standard ranges : (Other ranges & units on request)

Kg/cm <sup>2</sup>	0.25	-	0.5	0.75	1	-	1.6	2	2.5	3	3.5	4	5	-	6	7	9	10
bar	0.25	-	0.5	0.75	1	-	1.6	2	2.5	3	3.5	4	5	-	6	7	9	10
mbar	250	-	500	750	1000	-	-	-	-	-	-	-	-	-	-	-	-	-
psi	-	5	8	-	15	20	25	30	-	40	50	60	-	80	-	100	-	-
kPa	25	-	50	75	100	-	160	200	250	300	350	400	500	-	600	700	900	1000

## 12 Options

- O None
  - A Glycerine \*
  - B Red follower pointer on acrylic window \*
  - C Customer Logo
  - D Dual scale
  - E Colour band
  - F Filter mesh in (+) connection
  - H Descending calibration (long delivery time)
  - N NACE
  - S Silicone oil\*
  - I Oxygen service (Contact factory)
  - K 32mm thick body for high pressure application
  - M1 2" horizontal pipe mounting bracket
  - M3 2" vertical pipe mounting bracket
- \* Affects accuracy

## Ordering code sequence



Contact factory for special execution.

# How to order EX 300DGC

## SELECT MODEL

<b>1 Series</b>	<b>EX 300DGC</b>			
<b>2 Type</b>	GS Gauge + Switch	S Switch		
<b>3 Body material</b>	A Aluminum	B Brass		
	S SS-316	M Monel		
<b>4 Dial size</b>	2.5 2.5" (63 mm)	4.5 4.5" (115 mm)		
	3.5 3.5" (80 mm)	6.0 6.0" (150 mm)		
	4.0 4.0" (100 mm)			
<b>5 Connection</b>	4N 1/4" NPT (F) (Std.)	4B 1/4" BSP (F) (MOQ)		
	ZZ Special connection sizes using adaptor			
<b>6 Porting</b>	3 Bottom (Right side)	2 Back		
<b>7 Case</b>	S4 SS 304 (Std.)	S6 SS 316		
	F4 SS 304 flange			
	EP Engineering polymer (available in 2.5", 4.5", 6" only)			
<b>8 Window</b>	F Glass (Std.)	A Acrylic		
	T Toughened glass	L Safety glass		
<b>9 Seals/Diaphragm</b>	B Buna-N (Std.)	E EPDM		
	V Viton			
<b>10 Switch</b>	Select option & Specifications			

**Advantages :**  
Instrument automatically resets after line surges and cold start. This eliminates balancing of differential pressure instrument after such events.

- Notes**
- Both enclosures have provision for surface mounting.
  - For SS 316 case, please contact factory (MOQ applies).
  - Liquid filling + Follower pointer available.
  - Switch adjustment range between 20-100% of full scale deflection (FSD). For specific details, please contact factory.
  - Minimum Order Quantity (MOQ) applies for 6.0" (150mm) dial.
  - For electrical connection details, please refer to the datasheet.
  - Mounting bracket: Aluminum (Standard) ; SS (Optional)

0	None
2	One SPST, with a terminal strip
4	Two SPSTs, with a terminal strip

+

**SPST Specifications (AC/DC max)**

1 Standard	2	3	4
10 VA	40 VA	100 VA	60 VA
100 V	230 V	300 V	240 V
0.5 Amp	1 Amp	1 Amp	3 Amp
Adjustable	Adjustable	Adjustable	Adjustable

6	One SPDT, with a terminal strip
8	Two SPDTs, with a terminal strip

+

**SPDT Specifications (AC/DC max)**

1 Standard	2	3	4
3 VA	5 VA	5 VA	60 VA
30 V	125 V	175 V	400 V
0.3 Amp	0.25 Amp	0.25 Amp	1 Amp
Adjustable	Adjustable	Adjustable	Factory Set

**Example:** Switch selection 21 is 1 SPST with terminal strip with switch specifications 10VA, 100V, 0.5Amp

## 11 Range

**Standard ranges : (Other ranges & units on request)**

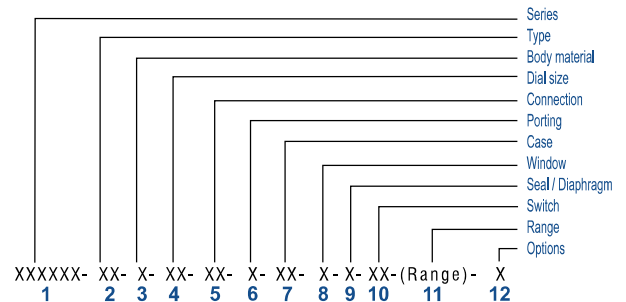
<b>Kg/cm<sup>2</sup></b>	0.075	0.25	-	0.5	0.75	1	-	1.6	2	2.5	3	-	4
<b>bar</b>	0.075	0.25	-	0.5	0.75	1	-	1.6	2	2.5	3	-	4
<b>mbar</b>	75-	250	-	-	750	-	-	-	-	-	-	-	-
<b>psi</b>	1	-	5	8	-	15	20	25	30	-	40	50	60
<b>kPa</b>	-	25	-	50	75	100	-	160	200	250	300	-	400

## 12 Options

- O None
- A Glycerine \*
- B Red follower pointer on acrylic window \*
- C Customer Logo
- D Dual scale
- E Colour band
- F Filter mesh in (+) connection
- H Descending calibration (long delivery time)
- N NACE
- S Silicone oil\*
- I Oxygen service (Contact factory)
- M1 2" horizontal pipe mounting bracket
- M3 2" vertical pipe mounting bracket

\* Affects accuracy

## Ordering code sequence



Contact factory for special execution.

# Completely New Document

## SELECT MODEL

- 1 Series** **EX 400DGC**
- 2 Type** GS Gauge + Switch      S Switch
- 3 Body material** A Aluminum      B Brass  
S SS-316
- 4 Dial size** 2.5 2.5" (63 mm)      4.5 4.5" (115 mm)  
3.5 3.5" (80 mm)      6.0 6.0" (150 mm)  
4.0 4.0" (100 mm)
- 5 Connection** 4N 1/4" NPT (F) (Std.)      4B 1/4" BSP (F)  
ZZ Special connection sizes using adaptor
- 6 Porting** 3 Bottom (Right side)      2 Back
- 7 Case** S4 SS 304 (Std.)      S6 SS 316  
F4 SS 304 flange  
EP Engineering polymer (available in 2.5", 4.5", 6" only)
- 8 Window** F Glass (Std.)      A Acrylic  
T Toughened glass      L Safety glass
- 9 Seals/Diaphragm** B Buna-N (Std.)      E EPDM  
V Viton
- 10 Switch** Select option & Specifications

**Advantages :**  
Instrument automatically resets after line surges and cold start.  
This eliminates balancing of differential pressure instrument after such events.

- Notes**
- Both enclosures have provision for surface mounting.
  - For SS 316 case, please contact factory (MOQ applies).
  - Liquid filling + Follower pointer available.
  - Switch adjustment range between 40-100% of full scale deflection (FSD). For specific details, please contact factory.
  - Minimum Order Quantity (MOQ) applies for 6.0" (150mm) dial.
  - For electrical connection details, please refer to the datasheet.
  - Mounting bracket: Aluminum (Standard) ; SS (Optional)

0	None
2	One SPST, with a terminal strip
4	Two SPSTs, with a terminal strip

+

**SPST Specifications (AC/DC max)**

1 Standard	2	3	4
10 VA	40 VA	100 VA	60 VA
100 V	230 V	300 V	240 V
0.5 Amp	1 Amp	1 Amp	3 Amp
Adjustable	Adjustable	Adjustable	Adjustable

6	One SPDT, with a terminal strip
8	Two SPDTs, with a terminal strip

+

**SPDT Specifications (AC/DC max)**

1 Standard	2	3	4
3 VA	5 VA	5 VA	60 VA
30 V	125 V	175 V	400 V
0.3 Amp	0.25 Amp	0.25 Amp	1 Amp
Adjustable	Adjustable	Adjustable	Factory Set

Example: Switch selection 21 is 1 SPST with terminal strip with switch specifications 10VA, 100V, 0.5Amp

## 11 Range

**Standard ranges : (Other ranges & units on request)**

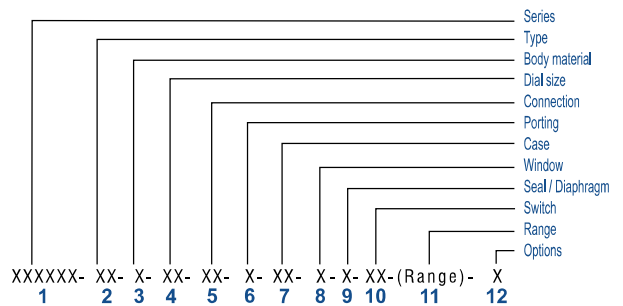
mm H2O	-	100	125	250	600
In. H2O	-	4	5	10	25
mbar	-	5	-	25	60
kPa	-	-	1.25	2.5	6

## 12 Options

- O None
- A Glycerine \*
- B Red follower pointer on acrylic window \*
- C Customer Logo
- D Dual scale
- E Colour band
- F Filter mesh in (+) connection
- H Descending calibration (long delivery time)
- N NACE
- S Silicone oil\*
- I Oxygen service (Contact factory)
- M1 2" horizontal pipe mounting bracket
- M3 2" vertical pipe mounting bracket

\* Affects accuracy

## Ordering code sequence



Contact factory for special execution.