

General

Frequency Range	UHF: 865-867MHz
Channel Capacity	76
Channel Spacing	25.0kHz
Frequency Stability	±1PPM
Operating Temperature	-25~+55°C
Antenna Impedance	50 Ω
Operating Voltage	DC7.4V
Dimension (H×W×D)	98 x 60 x 34 mm
Weight (with antenna & battery)	220g
Battery	2600mAh (Li-ion Battery)

Transmitter

RF Power (H/L)	UHF: 2W/1W
Modulation Type	16kF3E
Modulation Limit	≤5kHz
FM Distortion	≤5%
Residual FM	-45dB
Adjacent Channel Power	-70dB
Spurious and Harmonics	≤-36dBm(≤1GHz)/≤-30dBm(>1GHz)

Receiver

Sensitivity	0.22 μV
Adjacent Channel Selectivity	70dB
Intermodulation Reject Ratio	65dB
Spurious Response Reject Ratio	70dB
S/N	45dB
Rated Audio Power Output	≥800mW
Rated Audio Distortion	≤5%

Talk PRO

LF-866

License Free Radio

Easy Operation



Main Features

- FM radio
- Encryption (speech Secrecy)
- ID display
- Texting
- Remote stun, kill and revive for lost/ stolen/ retrieved radios
- High/ Low power adjust
- Whisper mode
- Large battery capacity of 2600 mAh for extra long talk time

Talk PRO

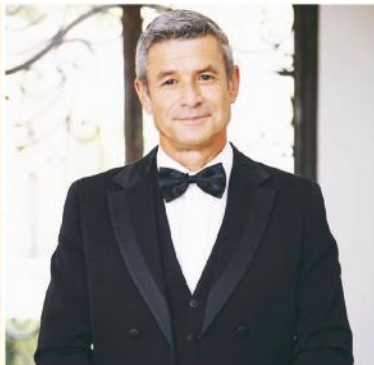
Address: 102, Spur Tank Road, Chetpet Chennai 600 031
Phone: 044-4280 9000 Fax: 044-4280 9100
Email: enquiry@talkpro.in

www.talkpro.in



All rights are reserved to Talk PRO. Pictures shown in this manual are for your reference only, if there is fluctuation, according to the real object, please.

Your Local Dealer



LF-866

Licence Free Radio

LF-866 is a powerful two-way radio. It embeds a LCD screen to display necessary information, such as signal level, current channel frequency or name, remain battery power etc. Keyboard design makes it easy to operate. Users can stay at their desired channels either through scanning function or entering channels' name directly. Its' advanced audio processing technology and ergonomic shape design make it so different from others. LF-866 also provides a few higher level functions, such as long standby time, VOX, Tx power switch etc..

Main Features

Ergonomic & Compact design

Users will not feel uncomfortable even holding the radio for a long period.

LCD Display

LF-866 embeds a LCD screen to display necessary information, such as signal strength level, current channel frequency or name, remain battery power level etc..

Main Functions

VOX

This function allows users to talk without pressing PTT key.

CTCSS / CDCSS

Unique CTCSS / CDCSS are useful for group users to avoid unwanted noise on the same channel.

Keyboard lock/unlock

Only PTT and the middle function key can be used when the keyboard lock function is on. This can prevent radio from any error-pressing.

Scan

LF-866 provides two channel scan modes, Which are TO (time operation) and CO (carrier operation). Users scan by different ways according to different situations.

BCL (Busy Channel Lockout)

It stops users to start talking if there is any conversation ongoing on the same channel

VFO/MR

LF-866 has two main work modes, VFO and MR. Users can flexibly enter a certain channel frequency to get into the channel in VFO mode. In MR mode, users can get into the channel by either entering channel's frequency or channel's name.

Other functions

DTMF
25khz
Programmable keys
Major/Side frequency switch
PTT ID Encode
TOT

Application

Hotel and restaurant

LF-866's ergonomic design makes it suitable for fast-paced service and industry. Squelch helps users to be able to do conversation in noisy environments. Among busy situations, VOX function can free your hands, thus users can still talk while hands are occupied.

Shopping Plaza and Supermarket

LF-866 is easy to carry, the standard configuration earphone and VOX function can free your hands and ensure the smooth communication.

Accessories



Antenna



Charger



Li-ion Battery



Belt Clip



Charger Adapter



Ear-piece Mic

Other:
Remote Speaker Mic